



[Go to Product page](#)

Datasheet for ABIN6143061
anti-L3MBTL3 antibody (AA 1-230)

2 Images

Overview

Quantity:	100 µL
Target:	L3MBTL3
Binding Specificity:	AA 1-230
Reactivity:	Human
Host:	Rabbit
Clonality:	Polyclonal
Conjugate:	This L3MBTL3 antibody is un-conjugated
Application:	Western Blotting (WB), Immunoprecipitation (IP), Immunofluorescence (IF), Immunohistochemistry (IHC)

Product Details

Immunogen:	Recombinant fusion protein containing a sequence corresponding to amino acids 1-230 of human L3MBTL3 (NP_001007103.1).
Sequence:	MTESASSTSG QEFDVFSVMD WKDGVGTLPG SDLKFRVNEF GALEVITDEN EMENVKKATA TTTWMVPTAQ EVFSEKTGMP FRLKDPVKVE GLQFCENCCQ YGNVDECLSG GNYCSQNCAR HIKDKDQKEE RDVEEDNEEE DPKCSRKKKP KLSLKADTKE DGEERDDEME NKQDVRILRG SQRARRKRRG DSAVLKQGLP PKGKKAWCWA SYLEEEKAVA VPAKLFKEHQ
Isotype:	IgG
Cross-Reactivity:	Human, Mouse
Characteristics:	Polyclonal Antibodies

Target Details

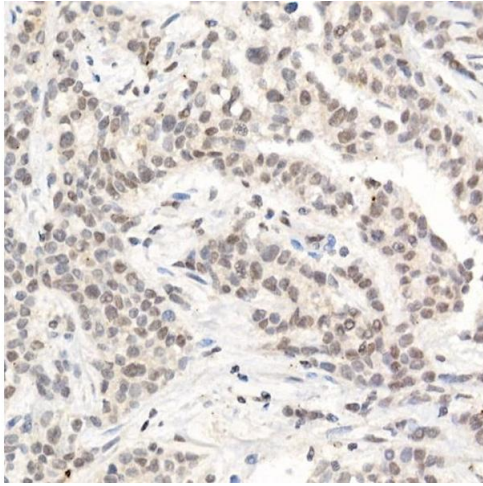
Target:	L3MBTL3
Alternative Name:	L3MBTL3 (L3MBTL3 Products)
Background:	This gene encodes a member of the malignant brain tumor (MBT) family of chromatin interacting transcriptional repressors. Members of this family function as methyl-lysine readers, which recognize methylated lysine residues on histone protein tails, and are associated with the repression of gene expression. The encoded protein may regulate hematopoiesis. Homozygous deletion of this gene has been observed in human patients with medulloblastoma. [provided by RefSeq, Oct 2016],L3MBTL3,MBT-1,MBT1,Epigenetics & Nuclear Signaling,Chromatin Remodeling,Stem Cells,Hematopoietic Progenitors,L3MBTL3
Molecular Weight:	85 kDa/88 kDa
Gene ID:	84456
UniProt:	Q96JM7

Application Details

Application Notes:	WB,1:500 - 1:2000,IHC,1:50 - 1:200,IF,1:50 - 1:200,IP,1:50 - 1:200
Comment:	HIGH QUALITY
Restrictions:	For Research Use only

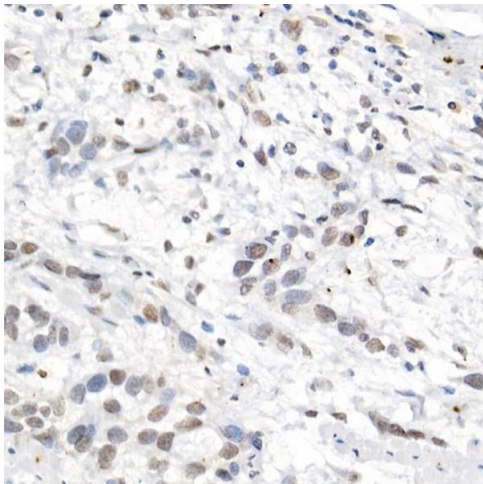
Handling

Format:	Liquid
Buffer:	PBS with 0.02 % sodium azide,50 % glycerol, pH 7.3.
Preservative:	Sodium azide
Precaution of Use:	This product contains Sodium azide: a POISONOUS AND HAZARDOUS SUBSTANCE which should be handled by trained staff only.
Storage:	-20 °C
Storage Comment:	Store at -20°C. Avoid freeze / thaw cycles.



Immunohistochemistry

Image 1. Immunohistochemistry of paraffin-embedded human breast cancer using [KO Validated] L3MBTL3 Rabbit pAb (ABIN6132145, ABIN6143061, ABIN6143062 and ABIN6223119) at dilution of 1:50 (40x lens). Perform high pressure antigen retrieval with 10 mM citrate buffer pH 6.0 before commencing with IHC staining protocol.



Immunohistochemistry

Image 2. Immunohistochemistry of paraffin-embedded human esophageal cancer using [KO Validated] L3MBTL3 Rabbit pAb (ABIN6132145, ABIN6143061, ABIN6143062 and ABIN6223119) at dilution of 1:50 (40x lens). Perform high pressure antigen retrieval with 10 mM citrate buffer pH 6.0 before commencing with IHC staining protocol.