

Datasheet for ABIN6143068
anti-Laminin beta 1 antibody (AA 1467-1786)



[Go to Product page](#)

1 Image

Overview

Quantity:	100 µL
Target:	Laminin beta 1 (LAMB1)
Binding Specificity:	AA 1467-1786
Reactivity:	Human
Host:	Rabbit
Clonality:	Polyclonal
Conjugate:	This Laminin beta 1 antibody is un-conjugated
Application:	Western Blotting (WB), Immunofluorescence (IF)

Product Details

Immunogen:	Recombinant fusion protein containing a sequence corresponding to amino acids 1467-1786 of human Laminin beta 1 (NP_002282.2).
Sequence:	EAKLRADEAK QSAEDILLKT NATKEKMDKS NEELRNLIKQ IRNFLTQDSA DLDSIEAVAN EVLKMEM PST PQQLQNLTED IRERVESLSQ VEVILQHSAA DIARAEM LLE EAKRASKSAT DVKVTADMVK EALEEAEKAQ VAAEKAIKQA DEDIQGTQNL LTSIESETAA SEETLFNASQ RISELERNVE ELKRKAAQNS GEAEYIEKVV YTVKQSAEDV KKTLDGELDE KYKKVENLIA KKTEESADAR RKAEM LQNEA KTL LAQANSK LQLLKD LERK YEDNQRYLED KAQELARLEG EVRSLKDIS QKVAVYSTCL
Isotype:	IgG
Cross-Reactivity:	Human, Mouse
Characteristics:	Polyclonal Antibodies

Target Details

Target: Laminin beta 1 (LAMB1)

Alternative Name: LAMB1 ([LAMB1 Products](#))

Background: Laminins, a family of extracellular matrix glycoproteins, are the major noncollagenous constituent of basement membranes. They have been implicated in a wide variety of biological processes including cell adhesion, differentiation, migration, signaling, neurite outgrowth and metastasis. Laminins are composed of 3 non identical chains: laminin alpha, beta and gamma and they form a cruciform structure consisting of 3 short arms, each formed by a different chain, and a long arm composed of all 3 chains. Different alpha, beta and gamma chain isomers combine to give rise to different heterotrimeric laminin isoforms which are designated by Arabic numerals in the order of their discovery, i.e. alpha1beta1gamma1 heterotrimer is laminin 1. This gene encodes the beta chain isoform laminin, beta 1. The beta 1 chain has 7 structurally distinct domains which it shares with other beta chain isomers. The C-terminal helical region containing domains I and II are separated by domain alpha, domains III and V contain several EGF-like repeats, and domains IV and VI have a globular conformation. Laminin, beta 1 is expressed in most tissues that produce basement membranes, and is one of the 3 chains constituting laminin 1, the first laminin isolated from Engelbreth-Holm-Swarm (EHS) tumor. A sequence in the beta 1 chain that is involved in cell attachment, chemotaxis, and binding to the laminin receptor was identified and shown to have the capacity to inhibit metastasis.,LAMB1,CLM,LIS5,Signal Transduction,Cell Biology & Developmental Biology,Cytoskeleton,Extracellular Matrix,Cardiovascular,Angiogenesis,LAMB1

Molecular Weight: 198 kDa

Gene ID: 3912

UniProt: [P07942](#)

Application Details

Application Notes: WB,1:1000 - 1:4000,IF,1:50 - 1:200

Comment: HIGH QUALITY

Restrictions: For Research Use only

Handling

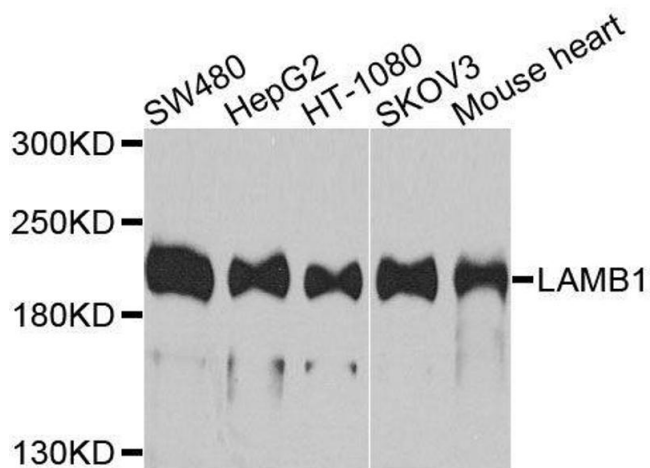
Format: Liquid

Buffer: PBS with 0.02 % sodium azide,50 % glycerol, pH 7.3.

Handling

Preservative:	Sodium azide
Precaution of Use:	This product contains Sodium azide: a POISONOUS AND HAZARDOUS SUBSTANCE which should be handled by trained staff only.
Storage:	-20 °C
Storage Comment:	Store at -20°C. Avoid freeze / thaw cycles.

Images



Western Blotting

Image 1. Western blot analysis of extracts of various cell lines, using LAMB1 antibody.