

Datasheet for ABIN6143072  
**anti-Laminin beta 3 antibody (AA 18-230)**



[Go to Product page](#)

1 Image

## Overview

Quantity:	100 µL
Target:	Laminin beta 3 (LAMB3)
Binding Specificity:	AA 18-230
Reactivity:	Human
Host:	Rabbit
Clonality:	Polyclonal
Conjugate:	This Laminin beta 3 antibody is un-conjugated
Application:	Western Blotting (WB)

## Product Details

Immunogen:	Recombinant fusion protein containing a sequence corresponding to amino acids 18-230 of human LAMB3 (NP_000219.2).
Sequence:	QQACSRGACY PPGDLLVGR TRFLRASSTC GLTKPETYCT QYGEWQMKCC KCDSRQPHNY YSHRVENVAS SSGPMRWWQS QNDVNPVSLQ LDLDRRFQLQ EVMMEFQGPM PAGMLIERSS DFGKTWRVYQ YLAADCTSTF PRVRQGRPQS WQDVRCQSLP QRPNARLNGG KVQLNLMDLV SGIPATQSQK IQEVGEITNL RVNFTRLAPV PQR
Isotype:	IgG
Cross-Reactivity:	Rat
Characteristics:	Polyclonal Antibodies

## Target Details

---

Target:	Laminin beta 3 (LAMB3)
Alternative Name:	LAMB3 ( <a href="#">LAMB3 Products</a> )
Background:	The product encoded by this gene is a laminin that belongs to a family of basement membrane proteins. This protein is a beta subunit laminin, which together with an alpha and a gamma subunit, forms laminin-5. Mutations in this gene cause epidermolysis bullosa junctional Herlitz type, and generalized atrophic benign epidermolysis bullosa, diseases that are characterized by blistering of the skin. Multiple alternatively spliced transcript variants that encode the same protein have been found for this gene.,LAMB3,AI1A,BM600-125KDA,LAM5,LAMNB1,LAMB3
Molecular Weight:	129 kDa
Gene ID:	3914
UniProt:	<a href="#">Q13751</a>
Pathways:	<a href="#">Brown Fat Cell Differentiation</a>

## Application Details

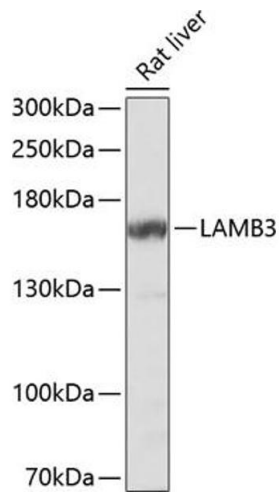
---

Application Notes:	WB,1:500 - 1:2000
Restrictions:	For Research Use only

## Handling

---

Format:	Liquid
Buffer:	PBS with 0.02 % sodium azide,50 % glycerol, pH 7.3.
Preservative:	Sodium azide
Precaution of Use:	This product contains Sodium azide: a POISONOUS AND HAZARDOUS SUBSTANCE which should be handled by trained staff only.
Storage:	-20 °C
Storage Comment:	Store at -20°C. Avoid freeze / thaw cycles.



### Western Blotting

**Image 1.** Western blot analysis of extracts of rat liver, using L Antibody at 1:1000 dilution. Secondary antibody: HRP Goat Anti-Rabbit IgG (H+L) (ABIN1684268 and ABIN3020597) at 1:10000 dilution. Lysates/proteins: 25 µg per lane. Blocking buffer: 3% nonfat dry milk in TBST. Detection: ECL Basic Kit (RM00020). Exposure time: 90s.