

Datasheet for ABIN6143081  
**anti-LAMP2 antibody (AA 30-300)**



[Go to Product page](#)

3 Images

## Overview

Quantity:	100 µL
Target:	LAMP2
Binding Specificity:	AA 30-300
Reactivity:	Human
Host:	Rabbit
Clonality:	Polyclonal
Conjugate:	This LAMP2 antibody is un-conjugated
Application:	Western Blotting (WB), Immunohistochemistry (IHC), Immunofluorescence (IF)

## Product Details

Immunogen:	Recombinant fusion protein containing a sequence corresponding to amino acids 30-300 of human LAMP2 (NP_054701.1).
Sequence:	ELNLTDSENA TCLYAKWQMN FTVRYETTNK TYKTVTISDH GTVTYNGSIC GDDQNGPKIA VQFGPGFSWI ANFTKAASTY SIDSVSFSYN TGDNTTFPDA EDKGILTVDE LLAIRIPLND LFRCNLSLTL EKNDVVQHYW DVLVQAFVQN GTVSTNEFLC DKDKTSTVAP TIHTTVPSPT TTPTPKKEPE AGTYSVNNGN DTCLLATMGL QLNITQDKVA SVININPNTT HSTGSCRSHT ALLRLNSSTI KYLDFVFAVK NENRFYLKEV N
Isotype:	IgG
Cross-Reactivity:	Human, Mouse, Rat
Characteristics:	Polyclonal Antibodies

## Target Details

---

Target:	LAMP2
Alternative Name:	LAMP2 ( <a href="#">LAMP2 Products</a> )
Background:	<p>The protein encoded by this gene is a member of a family of membrane glycoproteins. This glycoprotein provides selectins with carbohydrate ligands. It may play a role in tumor cell metastasis. It may also function in the protection, maintenance, and adhesion of the lysosome. Alternative splicing of this gene results in multiple transcript variants encoding distinct proteins.,LAMP2,CD107b,LAMP-2,LAMPB,LGP-96,LGP110,Cancer,Signal Transduction,Cell Biology &amp; Developmental Biology,Autophagy,Endocrine &amp; Metabolism,Immunology &amp; Inflammation,CD markers,Stem Cells,Hematopoietic Progenitors,Cardiovascular,Heart,LAMP2</p>
Molecular Weight:	44 kDa/45 kDa
Gene ID:	3920
UniProt:	<a href="#">P13473</a>
Pathways:	<a href="#">Autophagy</a>

## Application Details

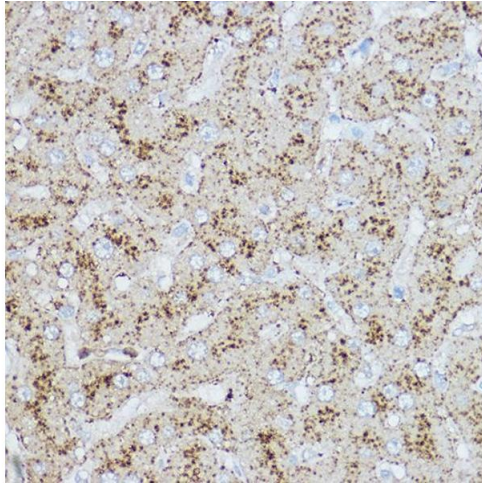
---

Application Notes:	WB,1:500 - 1:2000,IHC,1:50 - 1:200,IF,1:50 - 1:200
Restrictions:	For Research Use only

## Handling

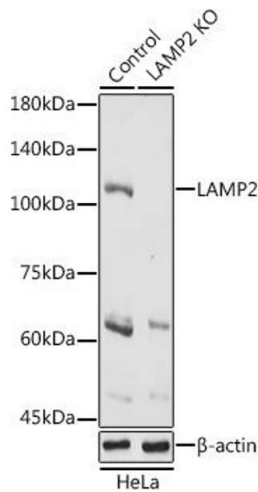
---

Format:	Liquid
Buffer:	PBS with 0.02 % sodium azide,50 % glycerol, pH 7.3.
Preservative:	Sodium azide
Precaution of Use:	This product contains Sodium azide: a POISONOUS AND HAZARDOUS SUBSTANCE which should be handled by trained staff only.
Storage:	-20 °C
Storage Comment:	Store at -20°C. Avoid freeze / thaw cycles.



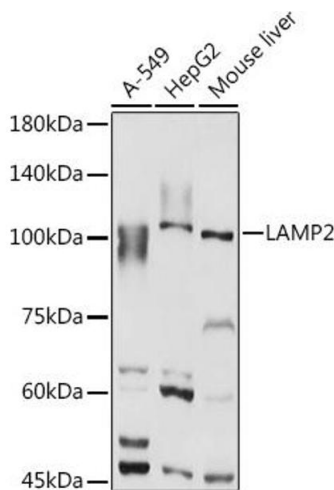
### Immunohistochemistry

**Image 1.** Immunohistochemistry of paraffin-embedded human liver using L Rabbit pAb (ABIN6129969, ABIN6143081, ABIN6143082 and ABIN6218224) at dilution of 1:200 (40x lens). Perform high pressure antigen retrieval with 10 mM citrate buffer pH 6.0 before commencing with IHC staining protocol.



### Western Blotting

**Image 2.** Western blot analysis of extracts of HeLa cells, using L antibody (ABIN6129969, ABIN6143081, ABIN6143082 and ABIN6218224) at 1:1000 dilution. Secondary antibody: HRP Goat Anti-Rabbit IgG (H+L) (ABIN1684268 and ABIN3020597) at 1:10000 dilution. Lysates/proteins: 25 µg per lane. Blocking buffer: 3 % nonfat dry milk in TBST. Detection: ECL Basic Kit (RM00020). Exposure time: 1s.



### Western Blotting

**Image 3.** Western blot analysis of extracts of various cell lines, using L antibody (ABIN6129969, ABIN6143081, ABIN6143082 and ABIN6218224) at 1:1000 dilution. Secondary antibody: HRP Goat Anti-Rabbit IgG (H+L) (ABIN1684268 and ABIN3020597) at 1:10000 dilution. Lysates/proteins: 25 µg per lane. Blocking buffer: 3 % nonfat dry milk in TBST. Detection: ECL Basic Kit (RM00020). Exposure time: 1s.