



[Go to Product page](#)

Datasheet for ABIN6143085
anti-HBXIP antibody (AA 1-173)

2 Images

Overview

Quantity:	100 µL
Target:	HBXIP
Binding Specificity:	AA 1-173
Reactivity:	Human
Host:	Rabbit
Clonality:	Polyclonal
Conjugate:	This HBXIP antibody is un-conjugated
Application:	Western Blotting (WB), Immunofluorescence (IF)

Product Details

Immunogen:	Recombinant fusion protein containing a sequence corresponding to amino acids 1-173 of human LAMTOR5 (NP_006393.2).
Sequence:	MEPGAGHLDG HRAGSPSLRQ ALCDGSAVMF SSKERGRCTV INFVPLEAPL RSTPRSRQVT EACGGEGRAV PLGSEPEWSV GGMEATLEQH LEDTMKNPSI VGVLC TDSQG LNLGCRG TLS DEHAGVISVL AQQAAKLTSD PTDIPVVCLE SDNGNIMI QK HDGITVAVHK MAS
Isotype:	IgG
Cross-Reactivity:	Human, Mouse, Rat
Characteristics:	Polyclonal Antibodies

Target Details

Target:	HBXIP
---------	-------

Target Details

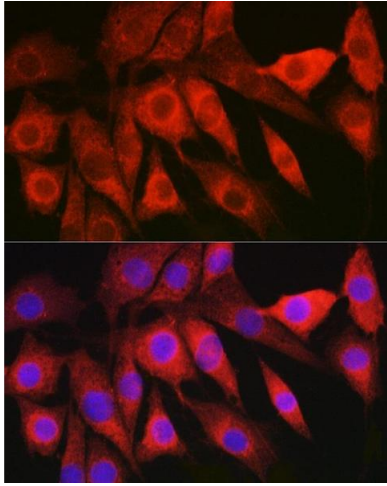
Alternative Name:	LAMTOR5 (HBXIP Products)
Target Type:	Viral Protein
Background:	This gene encodes a protein that specifically complexes with the C-terminus of hepatitis B virus X protein (HBx). The function of this protein is to negatively regulate HBx activity and thus to alter the replication life cycle of the virus.,LAMTOR5,HBXIP,XIP,Cell Biology & Developmental Biology,Apoptosis,Caspases,Autophagy,Immunology & Inflammation,Regulators,LAMTOR5
Molecular Weight:	9 kDa
Gene ID:	10542
UniProt:	O43504
Pathways:	PI3K-Akt Signaling , Regulation of Cell Size

Application Details

Application Notes:	WB,1:500 - 1:1000,IF,1:50 - 1:200
Comment:	HIGH QUALITY
Restrictions:	For Research Use only

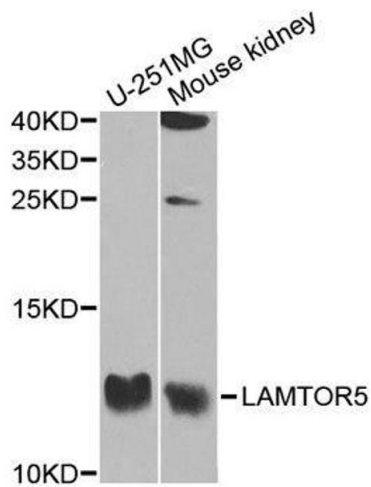
Handling

Format:	Liquid
Buffer:	PBS with 0.02 % sodium azide,50 % glycerol, pH 7.3.
Preservative:	Sodium azide
Precaution of Use:	This product contains Sodium azide: a POISONOUS AND HAZARDOUS SUBSTANCE which should be handled by trained staff only.
Storage:	-20 °C
Storage Comment:	Store at -20°C. Avoid freeze / thaw cycles.



Immunofluorescence

Image 1. Immunofluorescence analysis of NIH/3T3 cells using L Rabbit pAb (ABIN6130466, ABIN6143085, ABIN6143086 and ABIN6219719) at dilution of 1:200 (40x lens). Blue: DAPI for nuclear staining.



Western Blotting

Image 2. Western blot analysis of extracts of various cell lines, using LAMTOR5 antibody.