



[Go to Product page](#)

Datasheet for ABIN6143090
anti-LARP1B antibody (AA 170-320)

4 Images

Overview

Quantity:	100 µL
Target:	LARP1B
Binding Specificity:	AA 170-320
Reactivity:	Human
Host:	Rabbit
Clonality:	Polyclonal
Conjugate:	This LARP1B antibody is un-conjugated
Application:	Western Blotting (WB), Immunohistochemistry (IHC)

Product Details

Immunogen:	Recombinant fusion protein containing a sequence corresponding to amino acids 170-320 of human LARP1B (NP_060548.2).
Sequence:	FDYSYGYQEH GERTDQPFQT ELNTSMMYYY DDGTGVQVYP VEEALLKEYI KRQIEYYFSV ENLERDFFLR GKMDEQGFLP ISLIAGFQRV QALTTNLNLI LEALKDSTEV EIVDEKMRKK IEPEKWPIPG PPPRSVPPTD FSQLIDCPEF V
Isotype:	IgG
Cross-Reactivity:	Human, Mouse, Rat
Characteristics:	Polyclonal Antibodies

Target Details

Target:	LARP1B
---------	--------

Target Details

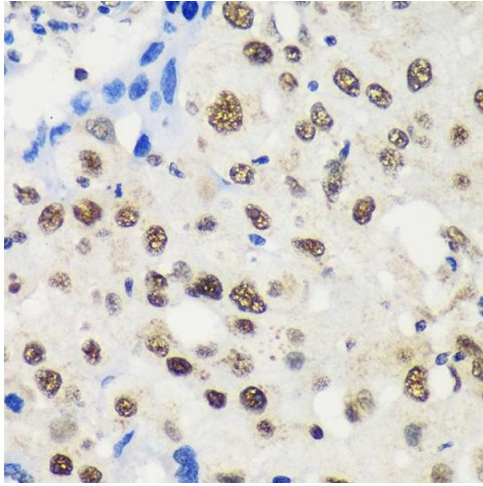
Alternative Name:	LARP1B (LARP1B Products)
Background:	This gene encodes a protein containing domains found in the La related protein of Drosophila melanogaster. La motif-containing proteins are thought to be RNA-binding proteins, where the La motif and adjacent amino acids fold into an RNA recognition motif. The La motif is also found in proteins unrelated to the La protein. Alternative splicing has been observed at this locus and multiple variants, encoding distinct isoforms, are described. Additional splice variation has been identified but the full-length nature of these transcripts has not been determined.,LARP1B,LARP2,Cell Biology & Developmental Biology,LARP1B
Molecular Weight:	14 kDa/24-38 kDa/90-105 kDa
Gene ID:	55132
UniProt:	Q659C4

Application Details

Application Notes:	WB,1:500 - 1:2000,IHC,1:50 - 1:200
Comment:	HIGH QUALITY
Restrictions:	For Research Use only

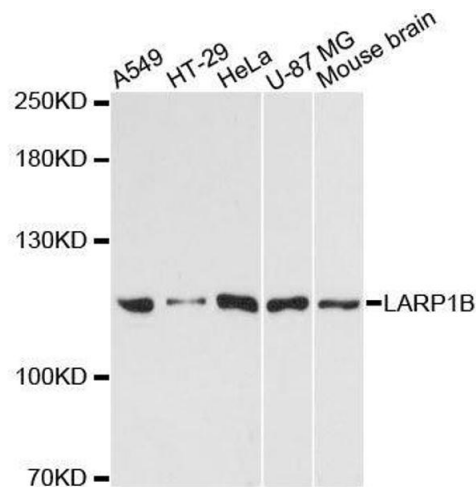
Handling

Format:	Liquid
Buffer:	PBS with 0.02 % sodium azide,50 % glycerol, pH 7.3.
Preservative:	Sodium azide
Precaution of Use:	This product contains Sodium azide: a POISONOUS AND HAZARDOUS SUBSTANCE which should be handled by trained staff only.
Storage:	-20 °C
Storage Comment:	Store at -20°C. Avoid freeze / thaw cycles.



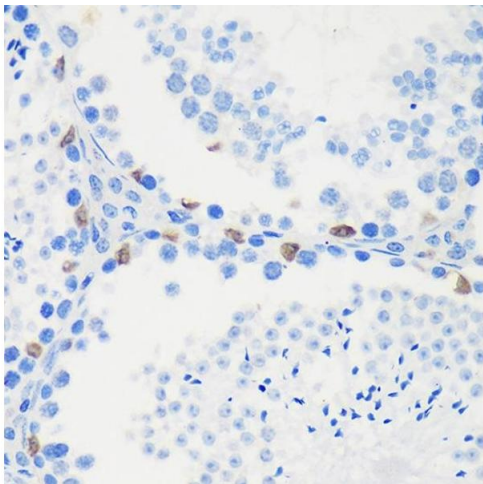
Immunohistochemistry

Image 1. Immunohistochemistry of paraffin-embedded Human breast cancer using LB Rabbit pAb (ABIN6131871, ABIN6143090, ABIN6143091 and ABIN6217142) at dilution of 1:100 (40x lens). Perform microwave antigen retrieval with 10 mM PBS buffer pH 7.2 before commencing with IHC staining protocol.



Western Blotting

Image 2. Western blot analysis of extracts of various cell lines, using LARP1B antibody.



Immunohistochemistry

Image 3. Immunohistochemistry of paraffin-embedded Mouse testis using LB Rabbit pAb (ABIN6131871, ABIN6143090, ABIN6143091 and ABIN6217142) at dilution of 1:100 (40x lens). Perform microwave antigen retrieval with 10 mM PBS buffer pH 7.2 before commencing with IHC staining protocol.

Please check the [product details page](#) for more images. Overall 4 images are available for ABIN6143090.