



[Go to Product page](#)

Datasheet for ABIN6143099
anti-LAT antibody (AA 28-233)

1 Image

Overview

Quantity:	100 µL
Target:	LAT
Binding Specificity:	AA 28-233
Reactivity:	Human
Host:	Rabbit
Clonality:	Polyclonal
Conjugate:	This LAT antibody is un-conjugated
Application:	Western Blotting (WB)

Product Details

Immunogen:	Recombinant fusion protein containing a sequence corresponding to amino acids 28-233 of human LAT (NP_001014987.1).
Sequence:	HCHRLPGSYD STSSDSLYPR GIQFKRPHTV APWPPAYPPV TSYPPLSQPD LLPIRSPQP LGGSHRTPSS RRDSGANSV ASYENEELPAC EDADEDEDDY HNPGYLVVLP DSTPATSTAA PSAPALSTPG IRDSAFSMES IDDYVNVPEP GESAEASLDG SREYVNVSQE LHPGAAKTEP AALSSQEAEV VEEEGAPDYE NLQELN
Isotype:	IgG
Cross-Reactivity:	Human
Characteristics:	Polyclonal Antibodies

Target Details

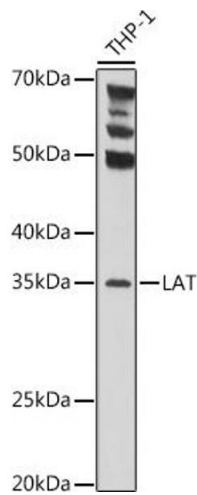
Target:	LAT
Alternative Name:	LAT (LAT Products)
Background:	The protein encoded by this gene is phosphorylated by ZAP-70/Syk protein tyrosine kinases following activation of the T-cell antigen receptor (TCR) signal transduction pathway. This transmembrane protein localizes to lipid rafts and acts as a docking site for SH2 domain-containing proteins. Upon phosphorylation, this protein recruits multiple adaptor proteins and downstream signaling molecules into multimolecular signaling complexes located near the site of TCR engagement. Alternative splicing results in multiple transcript variants encoding different isoforms.,LAT,LAT1,pp36,IMD52,Signal Transduction,G protein signaling,Signal Transduction,Immunology & Inflammation,T Cell Receptor Signaling Pathway,LAT
Molecular Weight:	24 kDa/27 kDa/28 kDa
Gene ID:	27040
UniProt:	O43561
Pathways:	TCR Signaling , Fc-epsilon Receptor Signaling Pathway

Application Details

Application Notes:	WB,1:500 - 1:2000
Restrictions:	For Research Use only

Handling

Format:	Liquid
Buffer:	PBS with 0.02 % sodium azide,50 % glycerol, pH 7.3.
Preservative:	Sodium azide
Precaution of Use:	This product contains Sodium azide: a POISONOUS AND HAZARDOUS SUBSTANCE which should be handled by trained staff only.
Storage:	-20 °C
Storage Comment:	Store at -20°C. Avoid freeze / thaw cycles.



Western Blotting

Image 1. Western blot analysis of extracts of THP-1 cells, using LAT Rabbit pAb (ABIN6128175, ABIN6143099, ABIN6143100 and ABIN6221291) at 1:1000 dilution. Secondary antibody: HRP Goat Anti-Rabbit IgG (H+L) (ABIN1684268 and ABIN3020597) at 1:10000 dilution. Lysates/proteins: 25 µg per lane. Blocking buffer: 3 % nonfat dry milk in TBST. Detection: ECL Basic Kit (RM00020). Exposure time: 1s.