

Datasheet for ABIN6143112
anti-Lipocalin 1 antibody (AA 19-176)



[Go to Product page](#)

2 Images

Overview

Quantity:	100 µL
Target:	Lipocalin 1 (LCN1)
Binding Specificity:	AA 19-176
Reactivity:	Human
Host:	Rabbit
Clonality:	Polyclonal
Conjugate:	This Lipocalin 1 antibody is un-conjugated
Application:	Western Blotting (WB), Immunohistochemistry (IHC)

Product Details

Immunogen:	Recombinant fusion protein containing a sequence corresponding to amino acids 19-176 of human LCN1 (NP_002288.1).
Sequence:	HHLLASDEEI QDVSGTWYLK AMTVDREFPE MNLESVTPMT LTTLEGGNLE AKVTMLISGR CQEVKAVLEK TDEPGKYTAD GGKHVAYIIR SHVKDHYIFY CEGELHGKPV RGVKLVGRDP KNNLEALEDF EKAAGARGLS TESILIPRQS ETCSPGSD
Isotype:	IgG
Cross-Reactivity:	Human
Characteristics:	Polyclonal Antibodies

Target Details

Target:	Lipocalin 1 (LCN1)
---------	--------------------

Target Details

Alternative Name: [LCN1 \(LCN1 Products\)](#)

Background: This gene encodes a member of the lipocalin family of small secretory proteins. Lipocalins are extracellular transport proteins that bind to a variety of hydrophobic ligands. The encoded protein is the primary lipid binding protein in tears and is overproduced in response to multiple stimuli including infection and stress. The encoded protein may be a marker for chromosome aneuploidy as well as an autoantigen in Sjogren's syndrome. Alternatively spliced transcript variants encoding multiple isoforms have been observed for this gene, and two pseudogenes of this gene are also located on the long arm of chromosome 9.,LCN1,PMFA,TLC,TP,VEGP,Cell Biology & Developmental Biology,Ubiquitin,Neuroscience,LCN1

Molecular Weight: 19 kDa

Gene ID: 3933

UniProt: [P31025](#)

Application Details

Application Notes: WB,1:500 - 1:2000,IHC,1:50 - 1:100

Restrictions: For Research Use only

Handling

Format: Liquid

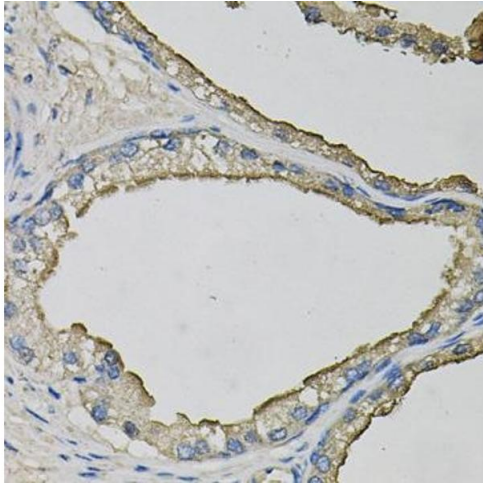
Buffer: PBS with 0.02 % sodium azide,50 % glycerol, pH 7.3.

Preservative: Sodium azide

Precaution of Use: This product contains Sodium azide: a POISONOUS AND HAZARDOUS SUBSTANCE which should be handled by trained staff only.

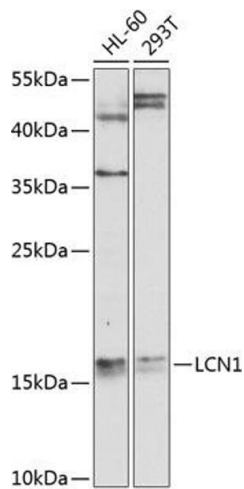
Storage: -20 °C

Storage Comment: Store at -20°C. Avoid freeze / thaw cycles.



Immunohistochemistry

Image 1. Immunohistochemistry of paraffin-embedded human prostate using LCN1 antibody at dilution of 1:100 (40x lens). Perform microwave antigen retrieval with 10 mM PBS buffer pH 7.2 before commencing with IHC staining protocol.



Western Blotting

Image 2. Western blot analysis of extracts of various cell lines, using LCN1 antibody at 1:1000 dilution. Secondary antibody: HRP Goat Anti-Rabbit IgG (H+L) (ABIN1684268 and ABIN3020597) at 1:10000 dilution. Lysates/proteins: 25 µg per lane. Blocking buffer: 3% nonfat dry milk in TBST. Detection: ECL Basic Kit (RM00020). Exposure time: 90s.