

Datasheet for ABIN6143118
anti-LCP1 antibody (AA 1-270)[Go to Product page](#)

2 Images

Overview

Quantity:	100 µL
Target:	LCP1
Binding Specificity:	AA 1-270
Reactivity:	Human
Host:	Rabbit
Clonality:	Polyclonal
Conjugate:	This LCP1 antibody is un-conjugated
Application:	Western Blotting (WB), Immunoprecipitation (IP)

Product Details

Immunogen:	Recombinant fusion protein containing a sequence corresponding to amino acids 1-270 of human L-Plastin/LCP1 (NP_002289.2).
Sequence:	MARGSVSDEE MMELREAFK VDTDGNGYIS FNELNDLFKA ACLPLPGYRV REITENLMAT GDLDQDGRIS FDEFIKIFHG LKSTDVAKTF RKAINKKEGI CAIGGTSEQS SVGTQHSYSE EEKYAFVNWI NKALENDPDC RHVIPMNPNT NDLFNAVGDG IVLCKMINLS VPDTIDERTI NKKKLTPFTI QENLNLALNS ASAIGCHVVN IGAEDLKEGK PYLVLGLLWQ VIKIGLFADI ELSRNEALIA LLREGESLED LMKLSPEELL
Isotype:	IgG
Cross-Reactivity:	Human, Mouse
Characteristics:	Polyclonal Antibodies

Target Details

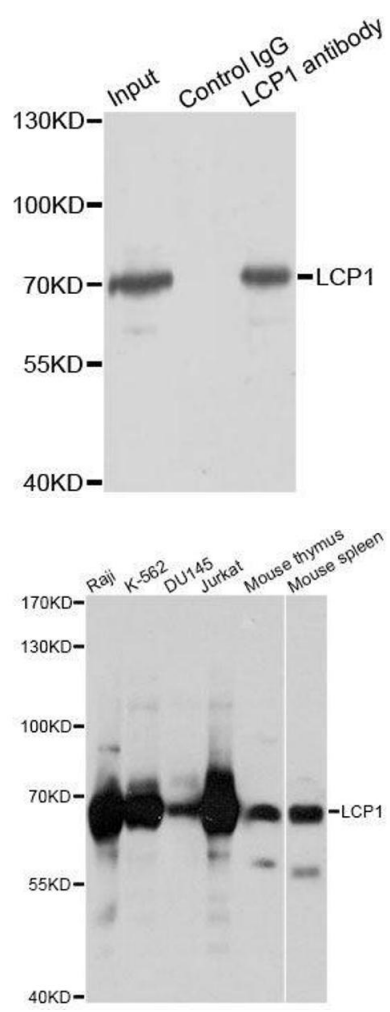
Target:	LCP1
Alternative Name:	LCP1 (LCP1 Products)
Background:	<p>Plastins are a family of actin-binding proteins that are conserved throughout eukaryote evolution and expressed in most tissues of higher eukaryotes. In humans, two ubiquitous plastin isoforms (L and T) have been identified. Plastin 1 (otherwise known as Fimbrin) is a third distinct plastin isoform which is specifically expressed at high levels in the small intestine. The L isoform is expressed only in hemopoietic cell lineages, while the T isoform has been found in all other normal cells of solid tissues that have replicative potential (fibroblasts, endothelial cells, epithelial cells, melanocytes, etc.). However, L-plastin has been found in many types of malignant human cells of non-hemopoietic origin suggesting that its expression is induced accompanying tumorigenesis in solid tissues.,LCP1,CP64,HEL-S-37,L-PLASTIN,LC64P,LPL,PLS2,plastin-2,Cancer,Tumor immunology,Tumor-associated antigens,Tumor biomarkers,Signal Transduction,Cell Biology & Developmental Biology,Cytoskeleton,Microfilaments,Immunology & Inflammation,LCP1</p>
Molecular Weight:	21 kDa/70 kDa
Gene ID:	3936
UniProt:	P13796

Application Details

Application Notes:	WB,1:500 - 1:2000,IP,1:20 - 1:50
Comment:	HIGH QUALITY
Restrictions:	For Research Use only

Handling

Format:	Liquid
Buffer:	PBS with 0.02 % sodium azide,50 % glycerol, pH 7.3.
Preservative:	Sodium azide
Precaution of Use:	This product contains Sodium azide: a POISONOUS AND HAZARDOUS SUBSTANCE which should be handled by trained staff only.
Storage:	-20 °C
Storage Comment:	Store at -20°C. Avoid freeze / thaw cycles.



Immunoprecipitation

Image 1. Immunoprecipitation analysis of 150ug extracts of Jurkat cells using 3ug LCP1 antibody.

Western Blotting

Image 2. Western blot analysis of extracts of various cell lines, using LCP1 antibody.