



[Go to Product page](#)

Datasheet for ABIN6143146  
**anti-LEPREL1 antibody (AA 400-700)**

1 Image

Overview

|                      |  |
|----------------------|--|
| Quantity:            | 100 µL                                 |
| Target:              | LEPREL1                                |
| Binding Specificity: | AA 400-700                             |
| Reactivity:          | Human                                  |
| Host:                | Rabbit                                 |
| Clonality:           | Polyclonal                             |
| Conjugate:           | This LEPREL1 antibody is un-conjugated |
| Application:         | Western Blotting (WB)                  |

Product Details

|                   |  |
|-------------------|--|
| Immunogen:        | Recombinant fusion protein containing a sequence corresponding to amino acids 400-700 of human LEPREL1 (NP_060662.2).  |
| Sequence:         | IRYGGQRDEN RVPSGVNVEG AEVHGFSMGK KLSPKIDRDL REGGPLLYEN ITFVYNSEQL<br>NGTQRVLLDN VLSEEQCREL HSVASGIMLV GDGYRGKTSP HTPNEKFEGA TVLKALKSGY<br>EGRVPLKSAR LFYDISEKAR RIVESYFMLN STLYFSYTHM VCRTALSGQQ DRRNDLSHPI<br>HADNCLLDPE ANECWKEPPA YTFRDYSALL YMNDDFEGGE FIFTEMDAKT VTASIKPKCG<br>RMISFSSGGE NPHGVKAVTK GKRCVALWF TLDPLYRELE RIQADEVIAI LDQEQQGKHE L |
| Isotype:          | IgG  |
| Cross-Reactivity: | Human, Mouse, Rat  |
| Characteristics:  | Polyclonal Antibodies  |

## Target Details

---

|                   |  |
|-------------------|--|
| Target:           | LEPREL1  |
| Alternative Name: | LEPREL1 ( <a href="#">LEPREL1 Products</a> )   |
| Background:       | <p>This gene encodes a member of the prolyl 3-hydroxylase subfamily of 2-oxo-glutarate-dependent dioxygenases. These enzymes play a critical role in collagen chain assembly, stability and cross-linking by catalyzing post-translational 3-hydroxylation of proline residues. Mutations in this gene are associated with nonsyndromic severe myopia with cataract and vitreoretinal degeneration, and downregulation of this gene may play a role in breast cancer. Alternatively spliced transcript variants encoding multiple isoforms have been observed for this gene.</p> <p>P3H2,LEPREL1,MCVD,MLAT4,Epigenetics &amp; Nuclear Signaling,Signal Transduction,Cell Biology &amp; Developmental Biology,Cytoskeleton,Extracellular Matrix,Collagen,Neuroscience,LEPREL1</p> |
| Molecular Weight: | 60 kDa/80 kDa  |
| Gene ID:          | 55214  |
| UniProt:          | <a href="#">Q8IVL5</a>   |

## Application Details

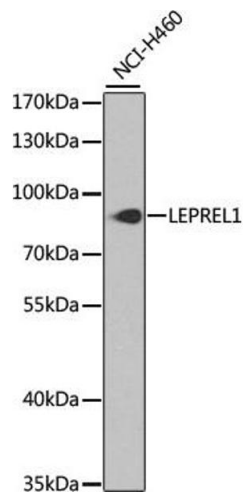
---

|                    |                       |
|--------------------|-----------------------|
| Application Notes: | WB,1:500 - 1:2000     |
| Comment:           | HIGH QUALITY          |
| Restrictions:      | For Research Use only |

## Handling

---

|                    |  |
|--------------------|--|
| Format:            | Liquid   |
| Buffer:            | PBS with 0.02 % sodium azide,50 % glycerol, pH 7.3.  |
| Preservative:      | Sodium azide   |
| Precaution of Use: | This product contains Sodium azide: a POISONOUS AND HAZARDOUS SUBSTANCE which should be handled by trained staff only. |
| Storage:           | -20 °C   |
| Storage Comment:   | Store at -20°C. Avoid freeze / thaw cycles.  |



### Western Blotting

**Image 1.** Western blot analysis of extracts of NCI-H460 cells, using LEPREL1 antibody (ABIN6132021, ABIN6143146, ABIN6143147 and ABIN6224093) at 1:1000 dilution. Secondary antibody: HRP Goat Anti-Rabbit IgG (H+L) (ABIN1684268 and ABIN3020597) at 1:10000 dilution. Lysates/proteins: 25  $\mu$ g per lane. Blocking buffer: 3 % nonfat dry milk in TBST. Detection: ECL Basic Kit (RM00020). Exposure time: 90s.