



[Go to Product page](#)

Datasheet for ABIN6143151
anti-LETM2 antibody (AA 257-396)

1 Image

Overview

Quantity:	100 µL
Target:	LETM2
Binding Specificity:	AA 257-396
Reactivity:	Human
Host:	Rabbit
Clonality:	Polyclonal
Conjugate:	This LETM2 antibody is un-conjugated
Application:	Western Blotting (WB)

Product Details

Immunogen:	Recombinant fusion protein containing a sequence corresponding to amino acids 257-396 of human LETM2 (NP_653253.1).
Sequence:	MRSGLGTEEQ LRQLTEWQD LHLKENVPPS LLLLSRTFYI IDVKPKPIEI PLSGEAPKTD ILVELPTFTE SKENMVDLAP QLKGTKDEDF IQPPPVTSSP ITPSTPISLP KGPITSSEEP TLQAKSQMTA QNSKASSKGA
Isotype:	IgG
Cross-Reactivity:	Human, Mouse, Rat
Characteristics:	Polyclonal Antibodies

Target Details

Target:	LETM2
---------	-------

Target Details

Alternative Name:	LETM2 (LETM2 Products)
Background:	LETM2,Endocrine & Metabolism,Mitochondrial metabolism,Mitochondrial markers,LETM2
Molecular Weight:	30 kDa/44 kDa/50 kDa/55 kDa
Gene ID:	137994
UniProt:	Q2VYF4

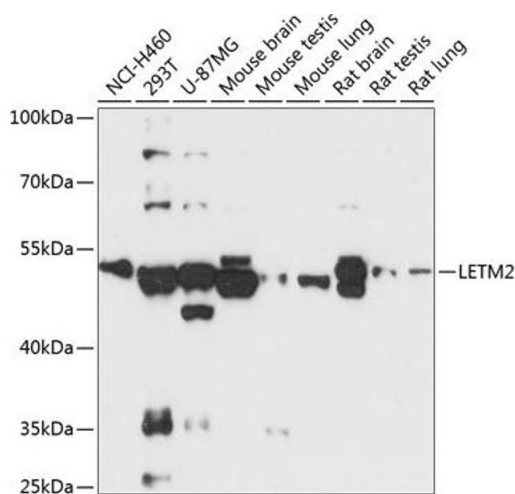
Application Details

Application Notes:	WB,1:500 - 1:2000
Restrictions:	For Research Use only

Handling

Format:	Liquid
Buffer:	PBS with 0.02 % sodium azide,50 % glycerol, pH 7.3.
Preservative:	Sodium azide
Precaution of Use:	This product contains Sodium azide: a POISONOUS AND HAZARDOUS SUBSTANCE which should be handled by trained staff only.
Storage:	-20 °C
Storage Comment:	Store at -20°C. Avoid freeze / thaw cycles.

Images



Western Blotting

Image 1. Western blot analysis of extracts of various cell lines, using LETM2 antibody (ABIN6131950, ABIN6143151, ABIN6143152 and ABIN6218019) at 1:3000 dilution. Secondary antibody: HRP Goat Anti-Rabbit IgG (H+L) (ABIN1684268 and ABIN3020597) at 1:10000 dilution. Lysates/proteins: 25 µg per lane. Blocking buffer: 3 % nonfat dry milk in TBST. Detection: ECL Basic Kit (RM00020). Exposure time: 90s.