

Datasheet for ABIN6143178  
**anti-LGR5 antibody (AA 824-907)**



[Go to Product page](#)

3 Images

## Overview

Quantity:	100 µL
Target:	LGR5
Binding Specificity:	AA 824-907
Reactivity:	Human
Host:	Rabbit
Clonality:	Polyclonal
Conjugate:	This LGR5 antibody is un-conjugated
Application:	Western Blotting (WB), Immunohistochemistry (IHC), Immunofluorescence (IF)

## Product Details

Immunogen:	Recombinant fusion protein containing a sequence corresponding to amino acids 824-907 of human LGR5/GPR49 (NP_003658.1).
Sequence:	NPHFKEDLVS LRKQTYVWTR SKHPSLMSIN SDDVEKQSCD STQALVTFTS SSITYDLPPS SVPSPAYPVT ESCHLSSVAF VPCL
Isotype:	IgG
Cross-Reactivity:	Human, Mouse, Rat
Characteristics:	Polyclonal Antibodies

## Target Details

Target:	LGR5
---------	------

## Target Details

---

Alternative Name: [LGR5 \(LGR5 Products\)](#)

---

Background: The protein encoded by this gene is a leucine-rich repeat-containing receptor (LGR) and member of the G protein-coupled, 7-transmembrane receptor (GPCR) superfamily. The encoded protein is a receptor for R-spondins and is involved in the canonical Wnt signaling pathway. This protein plays a role in the formation and maintenance of adult intestinal stem cells during postembryonic development. Several transcript variants encoding different isoforms have been found for this gene.,LGR5,FEX,GPR49,GPR67,GRP49,HG38,Cancer,Signal Transduction,G protein signaling,G-Protein-Coupled Receptors(GPCR),Stem Cells,LGR5

---

Molecular Weight: 92 kDa/97 kDa/99 kDa

---

Gene ID: 8549

---

UniProt: [O75473](#)

---

Pathways: [WNT Signaling](#)

---

## Application Details

---

Application Notes: WB,1:1000 - 1:2000,IHC,1:50 - 1:200,IF,1:50 - 1:200

---

Comment: HIGH QUALITY

---

Restrictions: For Research Use only

---

## Handling

---

Format: Liquid

---

Buffer: PBS with 0.02 % sodium azide,50 % glycerol, pH 7.3.

---

Preservative: Sodium azide

---

Precaution of Use: This product contains Sodium azide: a POISONOUS AND HAZARDOUS SUBSTANCE which should be handled by trained staff only.

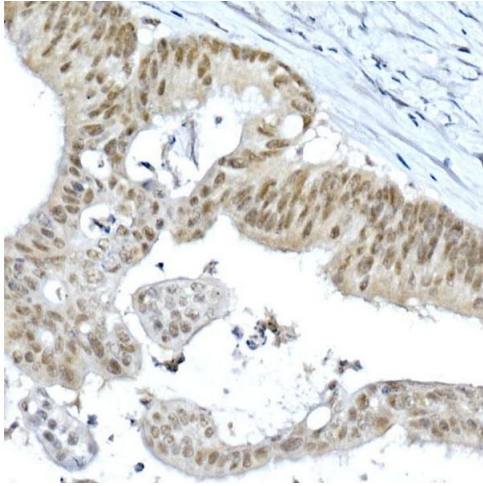
---

Storage: -20 °C

---

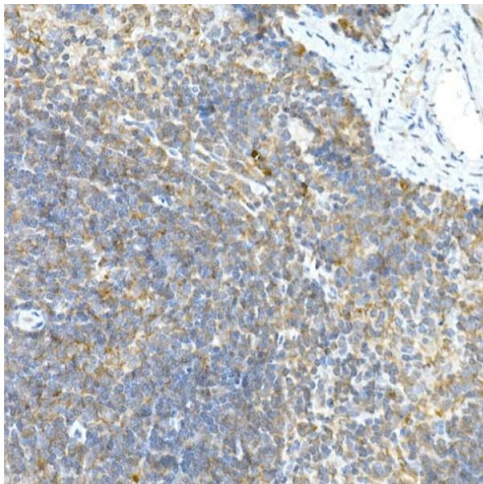
Storage Comment: Store at -20°C. Avoid freeze / thaw cycles.

---



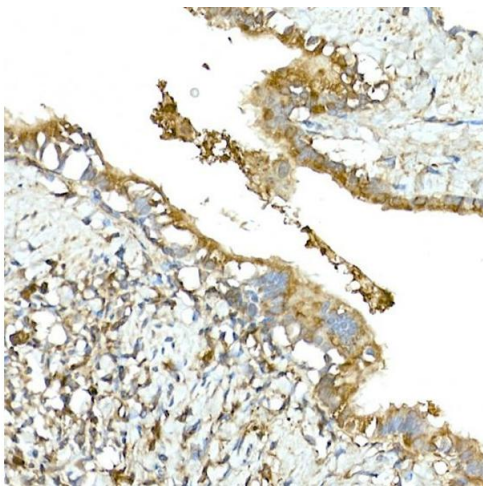
#### Immunohistochemistry

**Image 1.** Immunohistochemistry of paraffin-embedded rat ovary using LGR5/GPR49 Rabbit pAb at dilution of 1:300 (40x lens). Perform high pressure antigen retrieval with 10 mM citrate buffer pH 6.0 before commencing with IHC staining protocol.



#### Immunohistochemistry

**Image 2.** Immunohistochemistry of paraffin-embedded rat brain using LGR5/GPR49 Rabbit pAb at dilution of 1:300 (40x lens). Perform high pressure antigen retrieval with 10 mM citrate buffer pH 6.0 before commencing with IHC staining protocol.



#### Immunohistochemistry

**Image 3.** Immunohistochemistry of paraffin-embedded rat lung using LGR5/GPR49 Rabbit pAb at dilution of 1:300 (40x lens). Perform high pressure antigen retrieval with 10 mM citrate buffer pH 6.0 before commencing with IHC staining protocol.