



[Go to Product page](#)

Datasheet for ABIN6143187
anti-LHFPL2 antibody (AA 30-100)

1 Image

Overview

Quantity:	100 µL
Target:	LHFPL2
Binding Specificity:	AA 30-100
Reactivity:	Human
Host:	Rabbit
Clonality:	Polyclonal
Conjugate:	This LHFPL2 antibody is un-conjugated
Application:	Western Blotting (WB)

Product Details

Immunogen:	Recombinant fusion protein containing a sequence corresponding to amino acids 30-100 of human LHFPL2 (NP_005770.1).
Sequence:	SADWLIGKAR SRGGVEPAGP GGGSPPEPYHP TLGIYARCIR NPGVQHFQRD TLGGPYAESF GEIASGFWQA T
Isotype:	IgG
Cross-Reactivity:	Human
Characteristics:	Polyclonal Antibodies

Target Details

Target:	LHFPL2
---------	--------

Target Details

Alternative Name: LHFPL2 ([LHFPL2 Products](#))

Background: This gene is a member of the lipoma HMGIC fusion partner (LHFP) gene family, which is a subset of the superfamily of tetraspan transmembrane protein encoding genes. Mutations in one LHFP-like gene result in deafness in humans and mice, and a second LHFP-like gene is fused to a high-mobility group gene in a translocation-associated lipoma. Alternatively spliced transcript variants have been found, but their biological validity has not been determined.,LHFPL2,Cell Biology & Developmental Biology,LHFPL2

Molecular Weight: 24 kDa

Gene ID: 10184

UniProt: [Q6ZUX7](#)

Application Details

Application Notes: WB,1:500 - 1:1000

Restrictions: For Research Use only

Handling

Format: Liquid

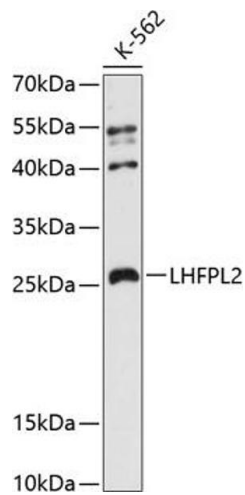
Buffer: PBS with 0.02 % sodium azide,50 % glycerol, pH 7.3.

Preservative: Sodium azide

Precaution of Use: This product contains Sodium azide: a POISONOUS AND HAZARDOUS SUBSTANCE which should be handled by trained staff only.

Storage: -20 °C

Storage Comment: Store at -20°C. Avoid freeze / thaw cycles.



Western Blotting

Image 1. Western blot analysis of extracts of K-562 cells, using LHFPL2 antibody (ABIN6133392, ABIN6143187, ABIN6143189 and ABIN6216567) at 1:3000 dilution. Secondary antibody: HRP Goat Anti-Rabbit IgG (H+L) (ABIN1684268 and ABIN3020597) at 1:10000 dilution. Lysates/proteins: 25 µg per lane. Blocking buffer: 3 % nonfat dry milk in TBST. Detection: ECL Enhanced Kit (RM00021). Exposure time: 90s.