



[Go to Product page](#)

Datasheet for ABIN6143193  
**anti-LHX4 antibody (AA 121-390)**

3 Images

Overview

Quantity:	100 µL
Target:	LHX4
Binding Specificity:	AA 121-390
Reactivity:	Human
Host:	Rabbit
Clonality:	Polyclonal
Conjugate:	This LHX4 antibody is un-conjugated
Application:	Western Blotting (WB), Immunohistochemistry (IHC)

Product Details

Immunogen:	Recombinant fusion protein containing a sequence corresponding to amino acids 121-390 of human LHX4 (NP_203129.1).
Sequence:	NRQLATGDEF YLMEDGRLVC KEDYETAKQN DDSEAGAKRP RTTITAKQLE TLKNAYKNSP KPARHVREQL SSETGLDMRV VQVWFQNRRA KEKRLKKDAG RHRWGQFYKS VKRSRGSSKQ EKESAECDG VSDSELSFRE DQILSELGHT NRIYGNVGDV TGGQLMNGSF SMDGTGQSYQ DLRDGSPYGI PQSPSSISL PSHAPLLNGL DYTVDNLGI IAHAGQGV SQ TLRAMAGGPT SDISTGSSVG YPDFPTSPGS WLDEMDHPPF
Isotype:	IgG
Cross-Reactivity:	Human, Mouse, Rat
Characteristics:	Polyclonal Antibodies

## Target Details

---

Target:	LHX4
Alternative Name:	LHX4 ( <a href="#">LHX4 Products</a> )
Background:	This gene encodes a member of a large protein family which contains the LIM domain, a unique cysteine-rich zinc-binding domain. The encoded protein is a transcription factor involved in the control of differentiation and development of the pituitary gland. Mutations in this gene cause combined pituitary hormone deficiency 4.,LHX4,CPHD4,Epigenetics & Nuclear Signaling,Transcription Factors,Neuroscience,LHX4
Molecular Weight:	43 kDa
Gene ID:	89884
UniProt:	<a href="#">Q969G2</a>

## Application Details

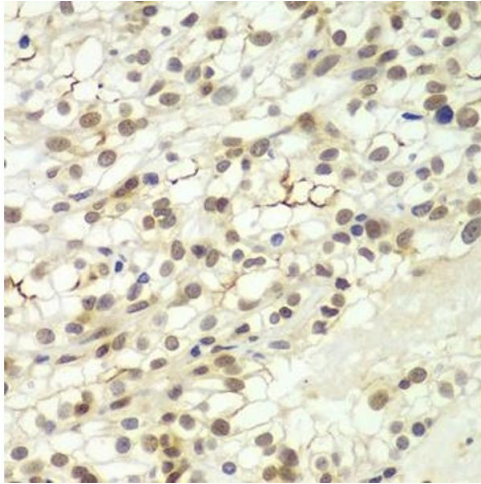
---

Application Notes:	WB,1:500 - 1:2000,IHC,1:50 - 1:200
Comment:	HIGH QUALITY
Restrictions:	For Research Use only

## Handling

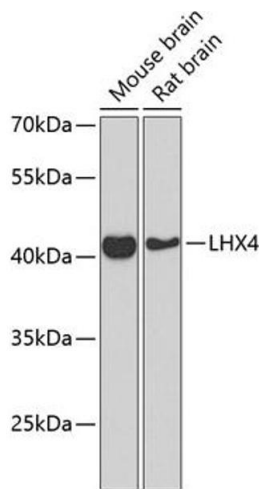
---

Format:	Liquid
Buffer:	PBS with 0.02 % sodium azide,50 % glycerol, pH 7.3.
Preservative:	Sodium azide
Precaution of Use:	This product contains Sodium azide: a POISONOUS AND HAZARDOUS SUBSTANCE which should be handled by trained staff only.
Storage:	-20 °C
Storage Comment:	Store at -20°C. Avoid freeze / thaw cycles.



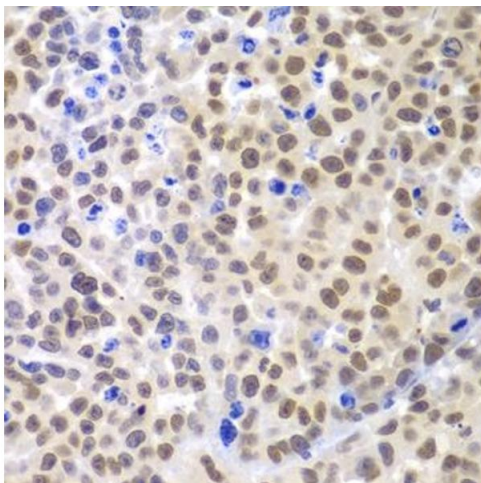
### Immunohistochemistry

**Image 1.** Immunohistochemistry of paraffin-embedded human kidney cancer using LHX4 antibody (ABIN6128183, ABIN6143193, ABIN6143194 and ABIN6224097) at dilution of 1:100 (40x lens). Perform microwave antigen retrieval with 10 mM PBS buffer pH 7.2 before commencing with IHC staining protocol.



### Western Blotting

**Image 2.** Western blot analysis of extracts of various cell lines, using LHX4 Antibody (ABIN6128183, ABIN6143193, ABIN6143194 and ABIN6224097) at 1:1000 dilution. Secondary antibody: HRP Goat Anti-Rabbit IgG (H+L) (ABIN1684268 and ABIN3020597) at 1:10000 dilution. Lysates/proteins: 25 µg per lane. Blocking buffer: 3 % nonfat dry milk in TBST. Detection: ECL Basic Kit (RM00020). Exposure time: 90s.



### Immunohistochemistry

**Image 3.** Immunohistochemistry of paraffin-embedded mouse cancer using LHX4 antibody (ABIN6128183, ABIN6143193, ABIN6143194 and ABIN6224097) at dilution of 1:100 (40x lens). Perform microwave antigen retrieval with 10 mM PBS buffer pH 7.2 before commencing with IHC staining protocol.