



[Go to Product page](#)

Datasheet for ABIN6143202
anti-LHX9 antibody (AA 1-70)

1 Image

Overview

Quantity:	100 µL
Target:	LHX9
Binding Specificity:	AA 1-70
Reactivity:	Human
Host:	Rabbit
Clonality:	Polyclonal
Conjugate:	This LHX9 antibody is un-conjugated
Application:	Western Blotting (WB)

Product Details

Immunogen:	Recombinant fusion protein containing a sequence corresponding to amino acids 1-70 of human LHX9 (NP_064589.2).
Sequence:	MEIVGCRAED NSCPFRPPAM LFHGISGGHI QGIMEEMERR SKTEARLAKG AQLNGRDAGM PPLSPEKPAL
Isotype:	IgG
Cross-Reactivity:	Human, Mouse, Rat
Characteristics:	Polyclonal Antibodies

Target Details

Target:	LHX9
---------	------

Target Details

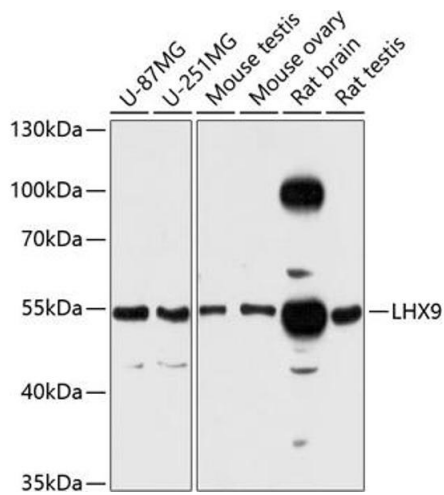
Alternative Name:	LHX9 (LHX9 Products)
Background:	This gene encodes a member of the LIM homeobox gene family of developmentally expressed transcription factors. The encoded protein contains a homeodomain and two cysteine-rich zinc-binding LIM domains involved in protein-protein interactions. The protein is highly similar to a mouse protein that causes gonadal agenesis when inactivated, suggesting a role in gonadal development. Alternative splicing results in multiple transcript variants.,LHX9,Epigenetics & Nuclear Signaling,Transcription Factors,Cell Biology & Developmental Biology,LHX9
Molecular Weight:	36 kDa/37 kDa/42 kDa/43 kDa
Gene ID:	56956
UniProt:	Q9NQ69

Application Details

Application Notes:	WB,1:500 - 1:2000
Comment:	HIGH QUALITY
Restrictions:	For Research Use only

Handling

Format:	Liquid
Buffer:	PBS with 0.02 % sodium azide,50 % glycerol, pH 7.3.
Preservative:	Sodium azide
Precaution of Use:	This product contains Sodium azide: a POISONOUS AND HAZARDOUS SUBSTANCE which should be handled by trained staff only.
Storage:	-20 °C
Storage Comment:	Store at -20°C. Avoid freeze / thaw cycles.



Western Blotting

Image 1. Western blot analysis of extracts of various cell lines, using LHX9 antibody (ABIN6128182, ABIN6143202, ABIN6143203 and ABIN6216456) at 1:3000 dilution. Secondary antibody: HRP Goat Anti-Rabbit IgG (H+L) (ABIN1684268 and ABIN3020597) at 1:10000 dilution. Lysates/proteins: 25 µg per lane. Blocking buffer: 3 % nonfat dry milk in TBST. Detection: ECL Enhanced Kit (RM00021). Exposure time: 90s.