



[Go to Product page](#)

Datasheet for ABIN6143223
anti-LIM2 antibody (AA 25-110)

1 Image

Overview

Quantity:	100 µL
Target:	LIM2
Binding Specificity:	AA 25-110
Reactivity:	Human
Host:	Rabbit
Clonality:	Polyclonal
Conjugate:	This LIM2 antibody is un-conjugated
Application:	Western Blotting (WB)

Product Details

Immunogen:	Recombinant fusion protein containing a sequence corresponding to amino acids 25-110 of human LIM2 (NP_085915.2).
Sequence:	TDHWMQYRLS GSFAHQGLWR YCLGNKCYLQ TDSIGEPGQ GPRAWGKSR ADLGAQGHLY SRWRTLRLKE GKGATQAYWN ATRAFM
Isotype:	IgG
Cross-Reactivity:	Human, Mouse, Rat
Characteristics:	Polyclonal Antibodies

Target Details

Target:	LIM2
---------	------

Target Details

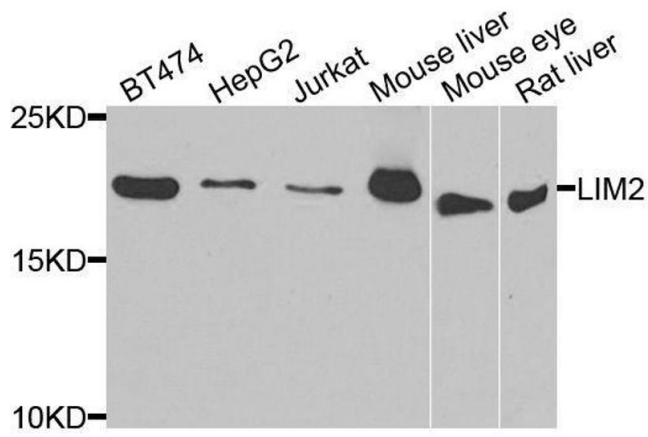
Alternative Name:	LIM2 (LIM2 Products)
Background:	This gene encodes an eye lens-specific protein found at the junctions of lens fiber cells, where it may contribute to cell junctional organization. It acts as a receptor for calmodulin, and may play an important role in both lens development and cataractogenesis. Mutations in this gene have been associated with cataract formation. Alternatively spliced transcript variants encoding different isoforms have been found for this gene.,LIM2,CTRCT19,MP17,MP19,Signal Transduction,Neuroscience,Calcium Signaling,LIM2
Molecular Weight:	19 kDa/24 kDa
Gene ID:	3982
UniProt:	P55344
Pathways:	Cell-Cell Junction Organization

Application Details

Application Notes:	WB,1:500 - 1:2000
Comment:	HIGH QUALITY
Restrictions:	For Research Use only

Handling

Format:	Liquid
Buffer:	PBS with 0.02 % sodium azide,50 % glycerol, pH 7.3.
Preservative:	Sodium azide
Precaution of Use:	This product contains Sodium azide: a POISONOUS AND HAZARDOUS SUBSTANCE which should be handled by trained staff only.
Storage:	-20 °C
Storage Comment:	Store at -20°C. Avoid freeze / thaw cycles.



Western Blotting

Image 1. Western blot analysis of extracts of various cell lines, using LIM2 antibody.