

Datasheet for ABIN6143230
anti-LIMK2 antibody (AA 1-240)

2 Images

[Go to Product page](#)

Overview

Quantity:	100 µL
Target:	LIMK2
Binding Specificity:	AA 1-240
Reactivity:	Human
Host:	Rabbit
Clonality:	Polyclonal
Conjugate:	This LIMK2 antibody is un-conjugated
Application:	Western Blotting (WB), Immunofluorescence (IF)

Product Details

Immunogen:	Recombinant fusion protein containing a sequence corresponding to amino acids 1-240 of human LIMK2 (NP_001026971.1).
Sequence:	MGSYLSVPAY FTSRDLFRCS ECQDSL TNWY YEKDGKLYCP KDYWGKFGEF CHGCSLLMTG PFMVAGEFKY HPECFACMSC KVIIEDGDAY ALVQHATLYC GKCHNEVVLA PMFERLSTES VQEQLPYSVT LISMPATTEG RRGFSVSVES ACSNYATTVQ VKEVNRMHIS PNNRNAIHPG DRILEINGTP VRTL RVEEVE DAISQTSQTL QLLIEHDPVS QRLDQLRLEA RLAPHMQNAG
Isotype:	IgG
Cross-Reactivity:	Human, Mouse
Characteristics:	Polyclonal Antibodies

Target Details

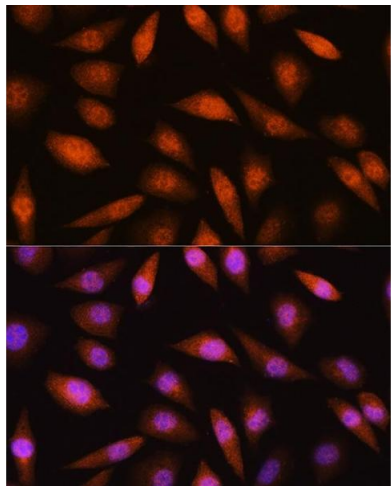
Target:	LIMK2
Alternative Name:	LIMK2 (LIMK2 Products)
Background:	<p>There are approximately 40 known eukaryotic LIM proteins, so named for the LIM domains they contain. LIM domains are highly conserved cysteine-rich structures containing 2 zinc fingers. Although zinc fingers usually function by binding to DNA or RNA, the LIM motif probably mediates protein-protein interactions. LIM kinase-1 and LIM kinase-2 belong to a small subfamily with a unique combination of 2 N-terminal LIM motifs and a C-terminal protein kinase domain. The protein encoded by this gene is phosphorylated and activated by ROCK, a downstream effector of Rho, and the encoded protein, in turn, phosphorylates cofilin, inhibiting its actin-depolymerizing activity. It is thought that this pathway contributes to Rho-induced reorganization of the actin cytoskeleton. At least three transcript variants encoding different isoforms have been found for this gene.,LIMK2,Cancer,Tumor suppressors,p53 pathway,Signal Transduction,Kinase,Serine/threonine kinases,Cell Biology & Developmental Biology,Cytoskeleton,Microfilaments,TGF-b-Smad Signaling Pathway,LIMK2</p>
Molecular Weight:	69 kDa/72 kDa/77 kDa
Gene ID:	3985
UniProt:	P53671

Application Details

Application Notes:	WB,1:500 - 1:2000,IF,1:50 - 1:200
Comment:	HIGH QUALITY
Restrictions:	For Research Use only

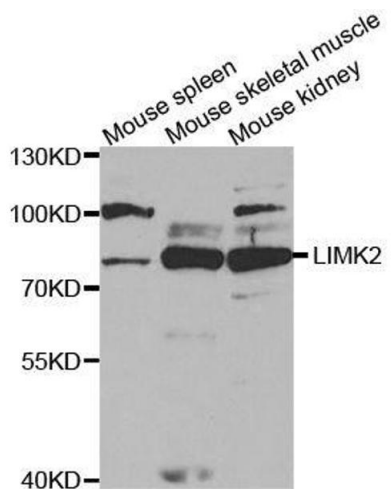
Handling

Format:	Liquid
Buffer:	PBS with 0.02 % sodium azide,50 % glycerol, pH 7.3.
Preservative:	Sodium azide
Precaution of Use:	This product contains Sodium azide: a POISONOUS AND HAZARDOUS SUBSTANCE which should be handled by trained staff only.
Storage:	-20 °C
Storage Comment:	Store at -20°C. Avoid freeze / thaw cycles.



Immunofluorescence

Image 1. Immunofluorescence analysis of L929 cells using LIMK2 Rabbit pAb (ABIN6128187, ABIN6143230, ABIN6143231 and ABIN6221057) at dilution of 1:100 (40x lens). Blue: DAPI for nuclear staining.



Western Blotting

Image 2. Western blot analysis of extracts of various cell lines, using LIMK2 antibody.