



[Go to Product page](#)

Datasheet for ABIN6143252
anti-LIPF antibody (AA 219-398)

1 Image

Overview

Quantity:	100 µL
Target:	LIPF
Binding Specificity:	AA 219-398
Reactivity:	Human
Host:	Rabbit
Clonality:	Polyclonal
Conjugate:	This LIPF antibody is un-conjugated
Application:	Western Blotting (WB)

Product Details

Immunogen:	Recombinant fusion protein containing a sequence corresponding to amino acids 219-398 of human LIPF (NP_004181.1).
Sequence:	QSLFKFIFGD KIFYPHNFFD QFLATEVCSR EMLNLLCSNA LFIICGFDSK NFNTSRLDVY LSHNPAGTSV QNMFHWTQAV KSGKFQAYDW GSPVQNRMHY DQSQPPYYNV TAMNVPIAVW NNGKDLLADP QDVGLLLPKL PNLIYHKEIP FYNHLDFIWA MDAPQEVYND IVSMISEDKK
Isotype:	IgG
Cross-Reactivity:	Human, Mouse, Rat
Characteristics:	Polyclonal Antibodies

Target Details

Target:	LIPF
---------	------

Target Details

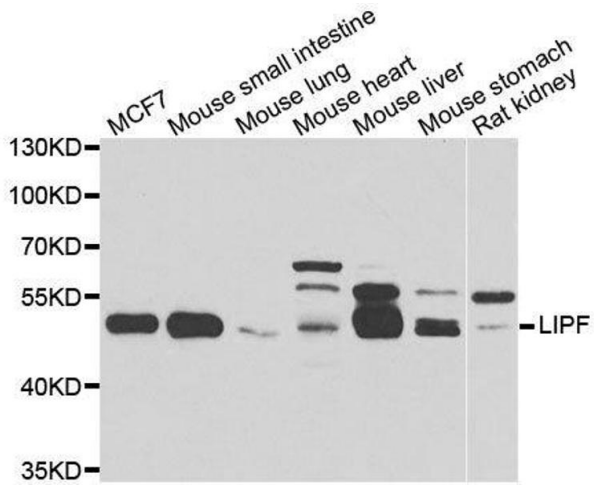
Alternative Name:	LIPF (LIPF Products)
Background:	<p>This gene encodes gastric lipase, an enzyme involved in the digestion of dietary triglycerides in the gastrointestinal tract, and responsible for 30 % of fat digestion processes occurring in human. It is secreted by gastric chief cells in the fundic mucosa of the stomach, and it hydrolyzes the ester bonds of triglycerides under acidic pH conditions. The gene is a member of a conserved gene family of lipases that play distinct roles in neutral lipid metabolism. Several transcript variants encoding different isoforms have been found for this gene.,LIPF,GL,HGL,HLAL,lipase F,Cancer,Signal Transduction,Endocrine & Metabolism,Lipid Metabolism,Lipases,Cardiovascular,Lipids,LIPF</p>
Molecular Weight:	41 kDa/42 kDa/45 kDa/46 kDa
Gene ID:	8513
UniProt:	P07098

Application Details

Application Notes:	WB,1:500 - 1:2000
Comment:	HIGH QUALITY
Restrictions:	For Research Use only

Handling

Format:	Liquid
Buffer:	PBS with 0.02 % sodium azide,50 % glycerol, pH 7.3.
Preservative:	Sodium azide
Precaution of Use:	This product contains Sodium azide: a POISONOUS AND HAZARDOUS SUBSTANCE which should be handled by trained staff only.
Storage:	-20 °C
Storage Comment:	Store at -20°C. Avoid freeze / thaw cycles.



Western Blotting

Image 1. Western blot analysis of extracts of various cell lines, using LIPF antibody.