

Datasheet for ABIN6143254  
**anti-LITAF antibody (AA 1-161)**

## 3 Images

[Go to Product page](#)

## Overview

Quantity:	100 µL
Target:	LITAF
Binding Specificity:	AA 1-161
Reactivity:	Human
Host:	Rabbit
Clonality:	Polyclonal
Conjugate:	This LITAF antibody is un-conjugated
Application:	Western Blotting (WB), Immunohistochemistry (IHC), Immunoprecipitation (IP)

## Product Details

Immunogen:	Recombinant fusion protein containing a sequence corresponding to amino acids 1-161 of human LITAF (NP_004853.2).
Sequence:	MSVPGPYQAA TGPSSAPSAP PSYEETVAVN SYYPTPPAPM PGPTTGLVTG PDGKGMNPPS YYTQPAPIPN NNPITVQTVY VQHPITFLDR PIQMCCPSCN KMIVSQLSYN AGALTWLSCG SLCLLGCIAG CCFIPFCVDA LQDVDHYCPN CRALLGTYKR L
Isotype:	IgG
Cross-Reactivity:	Human, Mouse
Characteristics:	Polyclonal Antibodies

## Target Details

Target:	LITAF
---------	-------

## Target Details

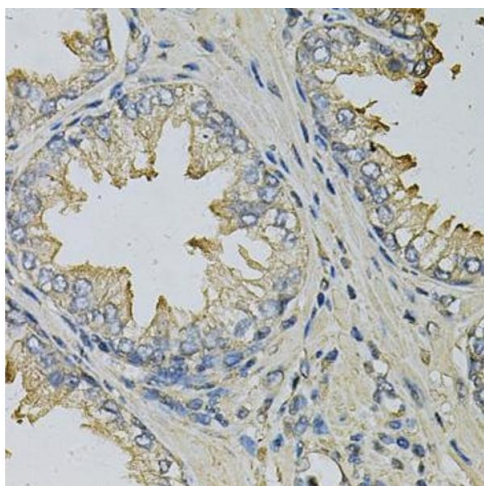
Alternative Name:	LITAF ( <a href="#">LITAF Products</a> )
Background:	Lipopolysaccharide is a potent stimulator of monocytes and macrophages, causing secretion of tumor necrosis factor-alpha (TNF-alpha) and other inflammatory mediators. This gene encodes lipopolysaccharide-induced TNF-alpha factor, which is a DNA-binding protein and can mediate the TNF-alpha expression by direct binding to the promoter region of the TNF-alpha gene. The transcription of this gene is induced by tumor suppressor p53 and has been implicated in the p53-induced apoptotic pathway. Mutations in this gene cause Charcot-Marie-Tooth disease type 1C (CMT1C) and may be involved in the carcinogenesis of extramammary Paget's disease (EMPD). Multiple alternatively spliced transcript variants have been found for this gene.,LITAF,PIG7,SIMPLE,TP53I7,Epigenetics & Nuclear Signaling,Signal Transduction,Cell Biology & Developmental Biology,Apoptosis,Growth factor,TNF,LITAF
Molecular Weight:	15 kDa/17 kDa/23 kDa
Gene ID:	9516
UniProt:	<a href="#">Q99732</a>
Pathways:	<a href="#">Cellular Response to Molecule of Bacterial Origin</a>

## Application Details

Application Notes:	WB,1:500 - 1:2000,IHC,1:50 - 1:200,IP,1:50 - 1:100
Comment:	HIGH QUALITY
Restrictions:	For Research Use only

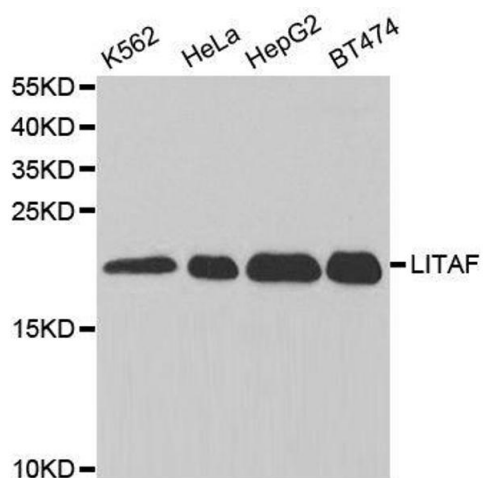
## Handling

Format:	Liquid
Buffer:	PBS with 0.02 % sodium azide,50 % glycerol, pH 7.3.
Preservative:	Sodium azide
Precaution of Use:	This product contains Sodium azide: a POISONOUS AND HAZARDOUS SUBSTANCE which should be handled by trained staff only.
Storage:	-20 °C
Storage Comment:	Store at -20°C. Avoid freeze / thaw cycles.



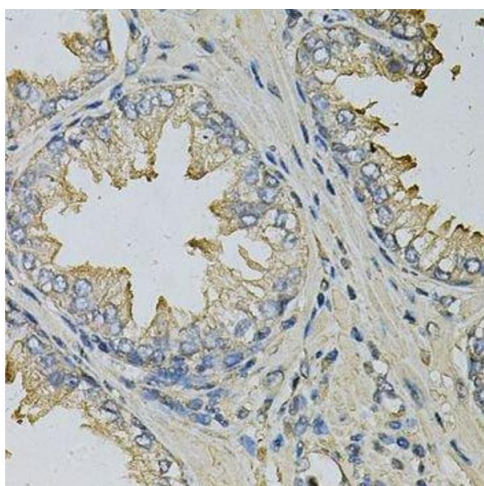
### Immunohistochemistry

**Image 1.** Immunohistochemistry of paraffin-embedded human prostate using LITAF Antibody (ABIN6130523, ABIN6143254, ABIN6143255 and ABIN6221131) at dilution of 1:100 (40x lens). Perform microwave antigen retrieval with 10 mM PBS buffer pH 7.2 before commencing with IHC staining protocol.



### Western Blotting

**Image 2.** Western blot analysis of extracts of various cell lines, using LITAF antibody.



### Immunohistochemistry (Paraffin-embedded Sections)

**Image 3.** Immunohistochemistry of paraffin-embedded human prostate using LITAF Antibody.