



[Go to Product page](#)

Datasheet for ABIN6143262
anti-LLGL2 antibody (AA 620-819)

2 Images

Overview

Quantity:	100 µL
Target:	LLGL2
Binding Specificity:	AA 620-819
Reactivity:	Mouse
Host:	Rabbit
Clonality:	Polyclonal
Conjugate:	This LLGL2 antibody is un-conjugated
Application:	Western Blotting (WB), Immunofluorescence (IF)

Product Details

Immunogen:	Recombinant fusion protein containing a sequence corresponding to amino acids 620-819 of mouse LLGL2 (NP_663413.2).
Sequence:	RQVFVKCTLH PSDQLALEGP LSRVKSLKKS LRQSFRMR SRVSSHKRRP GGPTGEAQAQ AVNIKAERTG LQNMELAPVQ RKIEARSAED SFTGFVRTLY FADTYLRDSS RHCPSLWAGT NGGTVYAFSL RVPPAERRTD EPVRAEQAKE IQLMHRAPVV GILVLDGHNH PLPEPLEVAH DLSKSPDMQG SHQLLVVSEE
Isotype:	IgG
Cross-Reactivity:	Human, Mouse, Rat
Characteristics:	Polyclonal Antibodies

Target Details

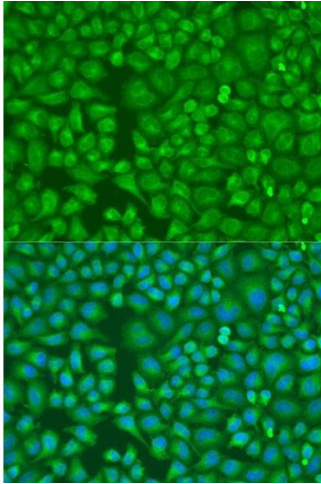
Target:	LLGL2
Alternative Name:	LLGL2 (LLGL2 Products)
Background:	The lethal (2) giant larvae protein of Drosophila plays a role in asymmetric cell division, epithelial cell polarity, and cell migration. This human gene encodes a protein similar to lethal (2) giant larvae of Drosophila. In fly, the protein's ability to localize cell fate determinants is regulated by the atypical protein kinase C (aPKC). In human, this protein interacts with aPKC-containing complexes and is cortically localized in mitotic cells. Alternative splicing results in multiple transcript variants encoding different isoforms.,LLGL2,HGL,Hugl-2,LGL2,Cell Biology & Developmental Biology,Cell Cycle,LLGL2
Molecular Weight:	114 kDa
Gene ID:	217325
Pathways:	WNT Signaling

Application Details

Application Notes:	WB,1:500 - 1:2000,IF,1:50 - 1:200
Restrictions:	For Research Use only

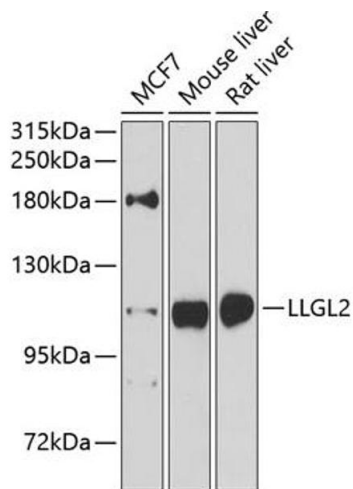
Handling

Format:	Liquid
Buffer:	PBS with 0.02 % sodium azide,50 % glycerol, pH 7.3.
Preservative:	Sodium azide
Precaution of Use:	This product contains Sodium azide: a POISONOUS AND HAZARDOUS SUBSTANCE which should be handled by trained staff only.
Storage:	-20 °C
Storage Comment:	Store at -20°C. Avoid freeze / thaw cycles.



Immunofluorescence

Image 1. Immunofluorescence analysis of U2OS cells using LLGL2 antibody (ABIN6131794, ABIN6143262, ABIN6143265 and ABIN6224298) at dilution of 1:100. Blue: DAPI for nuclear staining.



Western Blotting

Image 2. Western blot analysis of extracts of various cell lines, using LLGL2 antibody (ABIN6131794, ABIN6143262, ABIN6143265 and ABIN6224298) at 1:1000 dilution. Secondary antibody: HRP Goat Anti-Rabbit IgG (H+L) (ABIN1684268 and ABIN3020597) at 1:10000 dilution. Lysates/proteins: 25 µg per lane. Blocking buffer: 3 % nonfat dry milk in TBST. Detection: ECL Enhanced Kit (RM00021). Exposure time: 5s.