



[Go to Product page](#)

Datasheet for ABIN6143266  
**anti-LMAN1 antibody (AA 270-480)**

4 Images

Overview

Quantity:	100 µL
Target:	LMAN1
Binding Specificity:	AA 270-480
Reactivity:	Human
Host:	Rabbit
Clonality:	Polyclonal
Conjugate:	This LMAN1 antibody is un-conjugated
Application:	Western Blotting (WB), Immunohistochemistry (IHC), Immunofluorescence (IF)

Product Details

Immunogen:	Recombinant fusion protein containing a sequence corresponding to amino acids 270-480 of human LMAN1 (NP_005561.1).
Sequence:	PGKEPTPDK EISEKEKEY QEEFEHFQQE LDKKKEEFQK GHPDLQGQPA EEIFESVGDR ELRQVFEGQN RIHLEIKQLN RQLDMILDEQ RRYVSSLTEE ISKRGAGMPG QHGQITQQEL DTVVKTQHEI LRQVNEMKNS MSETVRLVSG MQHPGSAGGV YETTQHFIDI KEHLHIVKRD IDNLVQRNMP SNEKPKCEPEL PPFPSCLSTV H
Isotype:	IgG
Cross-Reactivity:	Human, Mouse, Rat
Characteristics:	Polyclonal Antibodies

## Target Details

---

Target:	LMAN1
Alternative Name:	LMAN1 ( <a href="#">LMAN1 Products</a> )
Background:	The protein encoded by this gene is a membrane mannose-specific lectin that cycles between the endoplasmic reticulum, endoplasmic reticulum-Golgi intermediate compartment, and cis-Golgi, functioning as a cargo receptor for glycoprotein transport. The protein has an N-terminal signal sequence, a calcium-dependent and pH -sensitive carbohydrate recognition domain, a stalk region that functions in oligomerization, a transmembrane domain, and a short cytoplasmic domain required for organelle targeting. Allelic variants of this gene are associated with the autosomal recessive disorder combined factor V-factor VIII deficiency.,LMAN1,ERGIC-53,ERGIC53,F5F8D,FMFD1,MCFD1,MR60,gp58,Signal Transduction,LMAN1
Molecular Weight:	57 kDa
Gene ID:	3998
UniProt:	<a href="#">P49257</a>

## Application Details

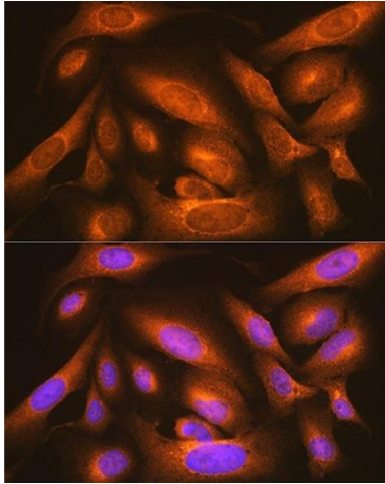
---

Application Notes:	WB,1:500 - 1:2000,IHC,1:50 - 1:100,IF,1:50 - 1:200
Comment:	HIGH QUALITY
Restrictions:	For Research Use only

## Handling

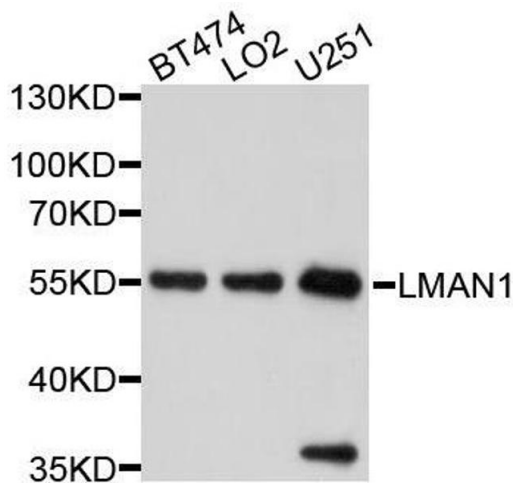
---

Format:	Liquid
Buffer:	PBS with 0.02 % sodium azide,50 % glycerol, pH 7.3.
Preservative:	Sodium azide
Precaution of Use:	This product contains Sodium azide: a POISONOUS AND HAZARDOUS SUBSTANCE which should be handled by trained staff only.
Storage:	-20 °C
Storage Comment:	Store at -20°C. Avoid freeze / thaw cycles.



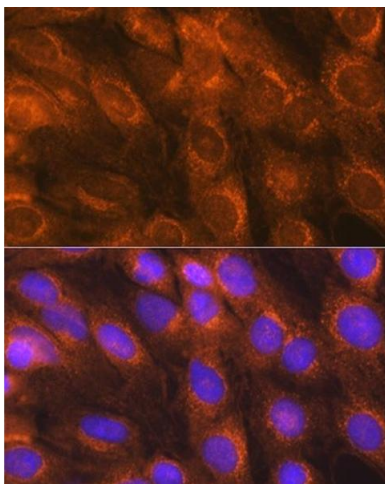
### Immunofluorescence

**Image 1.** Immunofluorescence analysis of U-2 OS cells using LM Rabbit pAb (ABIN6131613, ABIN6143266, ABIN6143267 and ABIN6214694) at dilution of 1:100 (40x lens). Blue: DAPI for nuclear staining.



### Western Blotting

**Image 2.** Western blot analysis of extracts of various cell lines, using LMAN1 antibody.



### Immunofluorescence

**Image 3.** Immunofluorescence analysis of C6 cells using LM Rabbit pAb (ABIN6131613, ABIN6143266, ABIN6143267 and ABIN6214694) at dilution of 1:100 (40x lens). Blue: DAPI for nuclear staining.

Please check the [product details page](#) for more images. Overall 4 images are available for ABIN6143266.