

Datasheet for ABIN6143280
anti-LMX1B antibody (AA 136-395)



[Go to Product page](#)

1 Image

Overview

Quantity:	100 µL
Target:	LMX1B
Binding Specificity:	AA 136-395
Reactivity:	Human
Host:	Rabbit
Clonality:	Polyclonal
Conjugate:	This LMX1B antibody is un-conjugated
Application:	Western Blotting (WB)

Product Details

Immunogen:	Recombinant fusion protein containing a sequence corresponding to amino acids 136-395 of human LMX1B (NP_002307.2).
Sequence:	YHLGCFCCCV CERQLRKGDE FVLKEGQLLC KGDYEKEKDL LSSVSPDESD SVKSEDEDGD MKPAKGQGSQ SKGSGDDGKD PRRPKRPRTI LTTQQRRAFK ASFEVSSKPC RKVRETLAAE TGLSVRVVQV WFQNQRAKMK KLARRHQQQQ EQQNSQRLGQ EVLSSRMEGM MASYTPLAPP QQQIVAMEQS PYGSSDPFQQ GLTPPQMPGN DSIFHDIDSD TSLTSLSDCF LGSSDVGSLQ ARVGNPIDRL YSMQSSYFAS
Isotype:	IgG
Cross-Reactivity:	Human, Mouse
Characteristics:	Polyclonal Antibodies

Target Details

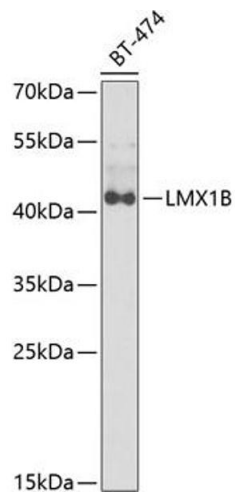
Target:	LMX1B
Alternative Name:	LMX1B (LMX1B Products)
Background:	<p>This gene encodes a member of LIM-homeodomain family of proteins containing two N-terminal zinc-binding LIM domains, 1 homeodomain, and a C-terminal glutamine-rich domain. It functions as a transcription factor, and is essential for the normal development of dorsal limb structures, the glomerular basement membrane, the anterior segment of the eye, and dopaminergic and serotonergic neurons. Mutations in this gene are associated with nail-patella syndrome. Alternatively spliced transcript variants encoding different isoforms have been found for this gene.,LMX1B,LMX1.2,NPS1,Epigenetics & Nuclear Signaling,Transcription Factors,Neuroscience,Neurodegenerative Diseases,Dopamine Signaling in Parkinson's Disease,LMX1B</p>
Molecular Weight:	44 kDa/45 kDa
Gene ID:	4010
UniProt:	O60663
Pathways:	Dopaminergic Neurogenesis

Application Details

Application Notes:	WB,1:500 - 1:2000
Comment:	HIGH QUALITY
Restrictions:	For Research Use only

Handling

Format:	Liquid
Buffer:	PBS with 0.02 % sodium azide,50 % glycerol, pH 7.3.
Preservative:	Sodium azide
Precaution of Use:	This product contains Sodium azide: a POISONOUS AND HAZARDOUS SUBSTANCE which should be handled by trained staff only.
Storage:	-20 °C
Storage Comment:	Store at -20°C. Avoid freeze / thaw cycles.



Western Blotting

Image 1. Western blot analysis of extracts of BT-474 cells, using LMX1B antibody at 1:1000 dilution. Secondary antibody: HRP Goat Anti-Rabbit IgG (H+L) (ABIN1684268 and ABIN3020597) at 1:10000 dilution. Lysates/proteins: 25 µg per lane. Blocking buffer: 3% nonfat dry milk in TBST. Detection: ECL Basic Kit (RM00020). Exposure time: 90s.