

Datasheet for ABIN6143290
anti-LOXL1 antibody (AA 95-370)[Go to Product page](#)

1 Image

Overview

Quantity:	100 µL
Target:	LOXL1
Binding Specificity:	AA 95-370
Reactivity:	Human
Host:	Rabbit
Clonality:	Polyclonal
Conjugate:	This LOXL1 antibody is un-conjugated
Application:	Western Blotting (WB), Immunofluorescence (IF)

Product Details

Immunogen:	Recombinant fusion protein containing a sequence corresponding to amino acids 95-370 of human LOXL1 (NP_005567.2).
Sequence:	RQAPSLPLPG RVGSDTVRGQ ARHPFGFGQV PDNWREVAVG DSTGMARART SVSQQRHGGS ASSVSASAFA STYRQQPSYP QQFPYPQAPF VSQYENYDPA SRTYDQGFVY YRPAGGGVGA GAAAVASAGV IYPYQPRARY EEYGGGEELP EYPPQGFYPA PERPYVPPPP PPPDGLDRRY SHSLYSEGTP GFEQAYPDPG PEAAQAHGGD PRLGWYPPYA NPPPEAYGPP RALEPPYLPV RSSDTPPPGG ERNGAQQGRL SVGSVYRPNQ NGRGLP
Isotype:	IgG
Cross-Reactivity:	Human, Mouse, Rat
Characteristics:	Polyclonal Antibodies

Target Details

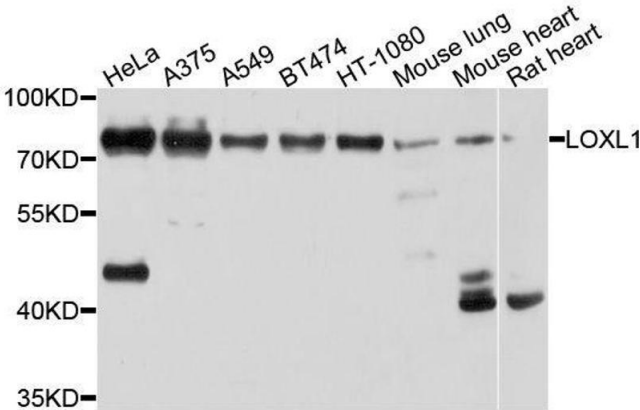
Target:	LOXL1
Alternative Name:	LOXL1 (LOXL1 Products)
Background:	<p>This gene encodes a member of the lysyl oxidase family of proteins. The prototypic member of the family is essential to the biogenesis of connective tissue, encoding an extracellular copper-dependent amine oxidase that catalyzes the first step in the formation of crosslinks in collagen and elastin. The encoded preproprotein is proteolytically processed to generate the mature enzyme. A highly conserved amino acid sequence at the C-terminus end appears to be sufficient for amine oxidase activity, suggesting that each family member may retain this function. The N-terminus is poorly conserved and may impart additional roles in developmental regulation, senescence, tumor suppression, cell growth control, and chemotaxis to each member of the family. Mutations in this gene are associated with exfoliation syndrome.,LOXL1,LOL,LOXL,Cancer,Signal Transduction,Cell Biology & Developmental Biology,Endocrine & Metabolism,Amino acid metabolism,LOXL1</p>
Molecular Weight:	63 kDa
Gene ID:	4016
UniProt:	Q08397

Application Details

Application Notes:	WB,1:1000 - 1:3000,IF,1:50 - 1:200
Comment:	HIGH QUALITY
Restrictions:	For Research Use only

Handling

Format:	Liquid
Buffer:	PBS with 0.02 % sodium azide,50 % glycerol, pH 7.3.
Preservative:	Sodium azide
Precaution of Use:	This product contains Sodium azide: a POISONOUS AND HAZARDOUS SUBSTANCE which should be handled by trained staff only.
Storage:	-20 °C
Storage Comment:	Store at -20°C. Avoid freeze / thaw cycles.



Western Blotting

Image 1. Western blot analysis of extracts of various cell lines, using LOXL1 antibody.