

Datasheet for ABIN6143311
anti-LRAT antibody (AA 31-150)



[Go to Product page](#)

1 Image

Overview

Quantity:	100 µL
Target:	LRAT
Binding Specificity:	AA 31-150
Reactivity:	Human
Host:	Rabbit
Clonality:	Polyclonal
Conjugate:	This LRAT antibody is un-conjugated
Application:	Western Blotting (WB)

Product Details

Immunogen:	Recombinant fusion protein containing a sequence corresponding to amino acids 31-150 of human LRAT (NP_004735.2).
Sequence:	GEDKGRNSFY ETSSFHRGDV LEVPRTHLTH YGIYLGDNRV AHMMPDILLA LTDDMGRTQK VVSNKRLILG VIVKVASIRV DTVEDFAYGA NILVNHLDLDES LQKKALLNEE VARRAEKLLG
Isotype:	IgG
Cross-Reactivity:	Human, Rat
Characteristics:	Polyclonal Antibodies

Target Details

Target:	LRAT
---------	------

Target Details

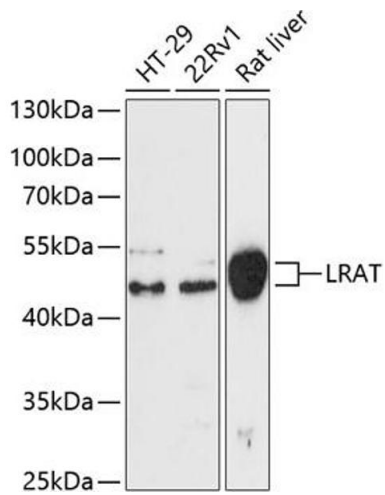
Alternative Name:	LRAT (LRAT Products)
Background:	The protein encoded by this gene localizes to the endoplasmic reticulum, where it catalyzes the esterification of all-trans-retinol into all-trans-retinyl ester. This reaction is an important step in vitamin A metabolism in the visual system. Mutations in this gene have been associated with early-onset severe retinal dystrophy and Leber congenital amaurosis 14. Alternative splicing results in multiple transcript variants.,LRAT,LCA14,Signal Transduction,Endocrine & Metabolism,Lipid Metabolism,Neuroscience,LRAT
Molecular Weight:	25 kDa
Gene ID:	9227
UniProt:	O95237

Application Details

Application Notes:	WB,1:500 - 1:2000
Comment:	HIGH QUALITY
Restrictions:	For Research Use only

Handling

Format:	Liquid
Buffer:	PBS with 0.02 % sodium azide,50 % glycerol, pH 7.3.
Preservative:	Sodium azide
Precaution of Use:	This product contains Sodium azide: a POISONOUS AND HAZARDOUS SUBSTANCE which should be handled by trained staff only.
Storage:	-20 °C
Storage Comment:	Store at -20°C. Avoid freeze / thaw cycles.



Western Blotting

Image 1. Western blot analysis of extracts of various cell lines, using Lrat antibody (ABIN6132017, ABIN6143311, ABIN6143314 and ABIN6217073) at 1:3000 dilution. Secondary antibody: HRP Goat Anti-Rabbit IgG (H+L) (ABIN1684268 and ABIN3020597) at 1:10000 dilution. Lysates/proteins: 25 µg per lane. Blocking buffer: 3 % nonfat dry milk in TBST. Detection: ECL Enhanced Kit (RM00021). Exposure time: 90s.