



[Go to Product page](#)

Datasheet for ABIN6143312
anti-LRAT antibody (AA 1-194)

2 Images

Overview

Quantity:	100 µL
Target:	LRAT
Binding Specificity:	AA 1-194
Reactivity:	Human
Host:	Rabbit
Clonality:	Polyclonal
Conjugate:	This LRAT antibody is un-conjugated
Application:	Western Blotting (WB), Immunofluorescence (IF)

Product Details

Immunogen:	Recombinant fusion protein containing a sequence corresponding to amino acids 1-194 of human LRAT (NP_004735.2).
Sequence:	MKNPMLEVVS LLEKLLIS NFTLFSSGAA GEDKGRNSFY ETSSFHRGDV LEVPRTHLTH YGIYLGDNRV AHMMPDILLA LTDDMGRTQK VVSNKRLILG VIVKVASIRV DTVEDFAYGA NILVNHLDES LQKKALLNEE VARRAEKLLG FTPYSLLWNN CEHFVTYCRY GTPISPQSDK FCETVKIIIR DQRS
Isotype:	IgG
Cross-Reactivity:	Human, Mouse, Rat
Characteristics:	Polyclonal Antibodies

Target Details

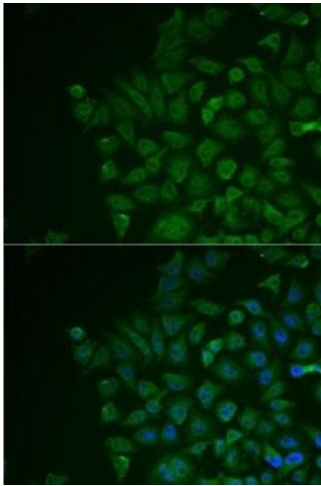
Target:	LRAT
Alternative Name:	LRAT (LRAT Products)
Background:	The protein encoded by this gene localizes to the endoplasmic reticulum, where it catalyzes the esterification of all-trans-retinol into all-trans-retinyl ester. This reaction is an important step in vitamin A metabolism in the visual system. Mutations in this gene have been associated with early-onset severe retinal dystrophy and Leber congenital amaurosis 14. Alternative splicing results in multiple transcript variants.,LRAT,LCA14,Signal Transduction,Endocrine & Metabolism,Lipid Metabolism,Neuroscience,LRAT
Molecular Weight:	25 kDa
Gene ID:	9227
UniProt:	O95237

Application Details

Application Notes:	WB,1:1000 - 1:2000,IF,1:50 - 1:200
Restrictions:	For Research Use only

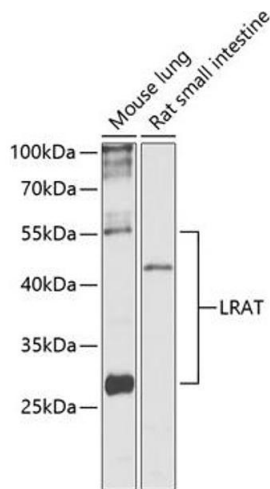
Handling

Format:	Liquid
Buffer:	PBS with 0.02 % sodium azide,50 % glycerol, pH 7.3.
Preservative:	Sodium azide
Precaution of Use:	This product contains Sodium azide: a POISONOUS AND HAZARDOUS SUBSTANCE which should be handled by trained staff only.
Storage:	-20 °C
Storage Comment:	Store at -20°C. Avoid freeze / thaw cycles.



Immunofluorescence

Image 1. Immunofluorescence analysis of MCF7 cells using LRAT antibody (ABIN6132018, ABIN6143312, ABIN6143315 and ABIN6217189). Blue: DAPI for nuclear staining.



Western Blotting

Image 2. Western blot analysis of extracts of various cell lines, using Lrat antibody (ABIN6132018, ABIN6143312, ABIN6143315 and ABIN6217189) at 1:1000 dilution. Secondary antibody: HRP Goat Anti-Rabbit IgG (H+L) (ABIN1684268 and ABIN3020597) at 1:10000 dilution. Lysates/proteins: 25 µg per lane. Blocking buffer: 3 % nonfat dry milk in TBST. Detection: ECL Basic Kit (RM00020). Exposure time: 30s.