

Datasheet for ABIN6143339
anti-LRPAP1 antibody (AA 35-357)



[Go to Product page](#)

2 Images

Overview

Quantity:	100 µL
Target:	LRPAP1
Binding Specificity:	AA 35-357
Reactivity:	Human
Host:	Rabbit
Clonality:	Polyclonal
Conjugate:	This LRPAP1 antibody is un-conjugated
Application:	Western Blotting (WB), Immunohistochemistry (IHC), Immunofluorescence (IF)

Product Details

Immunogen:	Recombinant fusion protein containing a sequence corresponding to amino acids 35-357 of human LRPAP1 (NP_002328.1).
Sequence:	YSREKNQPKP SPKRESGEEF RMEKLNQLWE KAQRHLPPV RLAELHADLK IQERDELAWK KLLKLDGLDED GEKEARLIRN LNVILAKYGL DGKKDARQVT SNSLSGTQED GLDDPRLEKL WHKAKTSGKF SGEELDKLWR EFLHHKEKVH EYNVLLLETLS RTEEIHENVI SPSDLSDIKG SVLHSRHTEL KEKLR SINQG LDRLRRVSHQ GYSTEAEFEE PRVIDLWDLA QSANLTDKEL EAFREELKHF EAKIEKHNHY QKQLEIAHEK LRHAESVGDG ERVSR SREKH ALLEGRTKEL GYTVKKHLQD LSGRISRARH NEL
Isotype:	IgG
Cross-Reactivity:	Human, Mouse, Rat
Characteristics:	Polyclonal Antibodies

Target Details

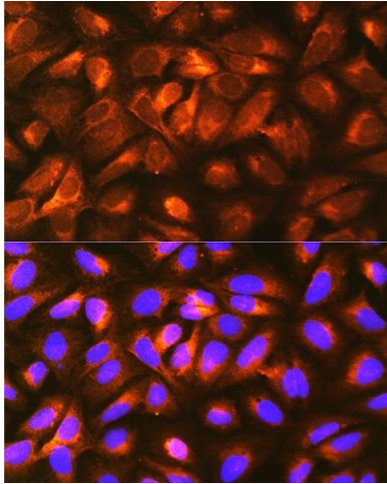
Target:	LRPAP1
Alternative Name:	LRPAP1 (LRPAP1 Products)
Background:	<p>This gene encodes a protein that interacts with the low density lipoprotein (LDL) receptor-related protein and facilitates its proper folding and localization by preventing the binding of ligands. Mutations in this gene have been identified in individuals with myopia 23. Alternative splicing results in multiple transcript variants.,LRPAP1,A2MRAP,A2RAP,HBP44,MRAP,MYP23,RAP,alpha-2-MRAP,Cancer,Signal Transduction,Endocrine & Metabolism,Lipid Metabolism,Cholesterol Metabolism,Cardiovascular,Lipids,LRPAP1</p>
Molecular Weight:	41 kDa
Gene ID:	4043
UniProt:	P30533

Application Details

Application Notes:	WB,1:500 - 1:2000,IHC,1:100 - 1:200,IF,1:50 - 1:200
Comment:	HIGH QUALITY
Restrictions:	For Research Use only

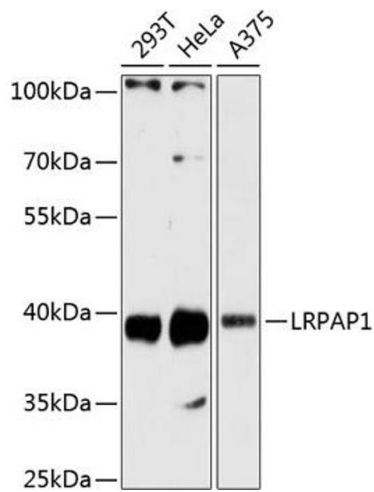
Handling

Format:	Liquid
Buffer:	PBS with 0.02 % sodium azide,50 % glycerol, pH 7.3.
Preservative:	Sodium azide
Precaution of Use:	This product contains Sodium azide: a POISONOUS AND HAZARDOUS SUBSTANCE which should be handled by trained staff only.
Storage:	-20 °C
Storage Comment:	Store at -20°C. Avoid freeze / thaw cycles.



Immunofluorescence

Image 1. Immunofluorescence analysis of U-2 OS cells using LRP Rabbit pAb at dilution of 1:100 (40x lens). Blue: DAPI for nuclear staining.



Western Blotting

Image 2. Western blot analysis of extracts of various cell lines, using LRP antibody at 1:3000 dilution. Secondary antibody: HRP Goat Anti-Rabbit IgG (H+L) (ABIN1684268 and ABIN3020597) at 1:10000 dilution. Lysates/proteins: 25 µg per lane. Blocking buffer: 3% nonfat dry milk in TBST. Detection: ECL Basic Kit (RM00020). Exposure time: 60s.