



[Go to Product page](#)

Datasheet for ABIN6143343
anti-LRRC4 antibody (AA 544-653)

1 Image

Overview

Quantity:	100 µL
Target:	LRRC4
Binding Specificity:	AA 544-653
Reactivity:	Human
Host:	Rabbit
Clonality:	Polyclonal
Conjugate:	This LRRC4 antibody is un-conjugated
Application:	Western Blotting (WB)

Product Details

Immunogen:	Recombinant fusion protein containing a sequence corresponding to amino acids 544-653 of human LRRC4 (NP_071426.1).
Sequence:	LIVFYKLRKR HQRSTVTAA RTVEIIQVDE DIPAAATSAAA TAAPSGVSGE GAVVLPTIHD HINYNTYKPA HGAHWTEENSL GNSLHPTVTT ISEPYIIQTH TKDKVQETQI
Isotype:	IgG
Cross-Reactivity:	Human, Mouse, Rat
Characteristics:	Polyclonal Antibodies

Target Details

Target:	LRRC4
---------	-------

Target Details

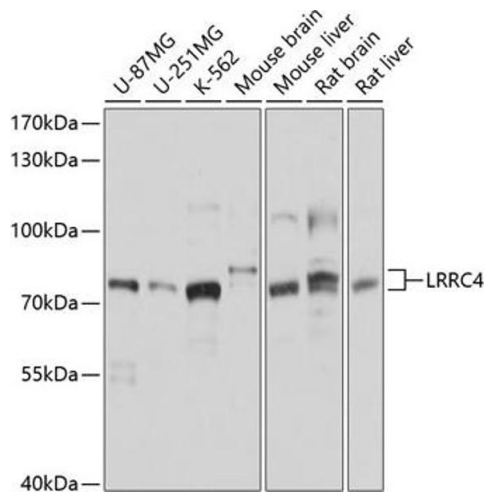
Alternative Name:	LRRC4 (LRRC4 Products)
Background:	This gene is significantly downregulated in primary brain tumors. The exact function of the protein encoded by this gene is unknown.,LRRC4,NAG14,NGL-2,Cell Biology & Developmental Biology,Cell Adhesion,Neuroscience,Cell Type Marker,Neuron marker,Synapse marker,LRRC4
Molecular Weight:	72 kDa
Gene ID:	64101
UniProt:	Q9HBW1
Pathways:	Synaptic Membrane

Application Details

Application Notes:	WB,1:1000 - 1:2000
Comment:	HIGH QUALITY
Restrictions:	For Research Use only

Handling

Format:	Liquid
Buffer:	PBS with 0.02 % sodium azide,50 % glycerol, pH 7.3.
Preservative:	Sodium azide
Precaution of Use:	This product contains Sodium azide: a POISONOUS AND HAZARDOUS SUBSTANCE which should be handled by trained staff only.
Storage:	-20 °C
Storage Comment:	Store at -20°C. Avoid freeze / thaw cycles.



Western Blotting

Image 1. Western blot analysis of extracts of various cell lines, using LRRC4 antibody (ABIN6133394, ABIN6143343, ABIN6143344 and ABIN6214532) at 1:1000 dilution. Secondary antibody: HRP Goat Anti-Rabbit IgG (H+L) (ABIN1684268 and ABIN3020597) at 1:10000 dilution. Lysates/proteins: 25 µg per lane. Blocking buffer: 3 % nonfat dry milk in TBST. Detection: ECL Basic Kit (RM00020). Exposure time: 1s.