



Datasheet for ABIN6143345
anti-LRRC59 antibody (AA 1-244)



[Go to Product page](#)

6 Images

Overview

Quantity:	100 µL
Target:	LRRC59
Binding Specificity:	AA 1-244
Reactivity:	Human
Host:	Rabbit
Clonality:	Polyclonal
Conjugate:	This LRRC59 antibody is un-conjugated
Application:	Western Blotting (WB), Immunohistochemistry (IHC)

Product Details

Immunogen:	Recombinant fusion protein containing a sequence corresponding to amino acids 1-244 of human LRRC59 (NP_060979.2).
Sequence:	MTKAGSKGGN LRDKLDGNEL DLSLSDLNEV PVKELAALPK ATILDLSCKN LTTLPSTDFCG LTHLVKLDLS KNKLQQLPAD FGRLVNLQHL DLLNKLVT L PVSFAQLKNL KWLDLKDNP L DPVLAKVAGD CLDEKQCKQC ANKVLQHMKA VQADQERERQ RRLEVEREAE KKREAKQRAK EAQERELRKR EKAEKERRR KEYDALKAAK REQEKPKKE ANQAPKSKSG SRPRKPPPRK HTRS
Isotype:	IgG
Cross-Reactivity:	Human, Mouse, Rat
Characteristics:	Polyclonal Antibodies

Target Details

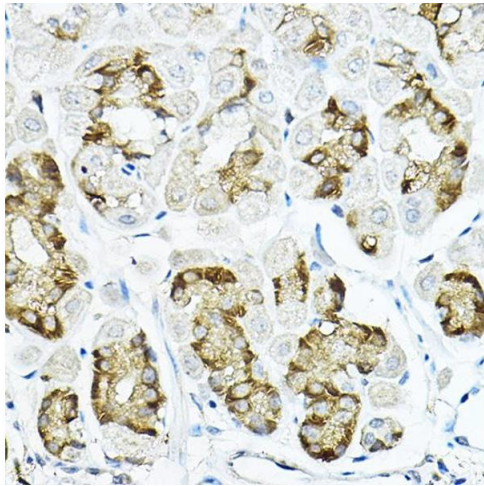
Target:	LRRRC59
Alternative Name:	LRRRC59 (LRRRC59 Products)
Background:	Required for nuclear import of FGF1, but not that of FGF2. Might regulate nuclear import of exogenous FGF1 by facilitating interaction with the nuclear import machinery and by transporting cytosolic FGF1 to, and possibly through, the nuclear pores.,LRRRC59,PRO1855,p34,Epigenetics & Nuclear Signaling,RNA Binding,Signal Transduction,LRRRC59
Molecular Weight:	34 kDa
Gene ID:	55379
UniProt:	Q96AG4

Application Details

Application Notes:	WB,1:1000 - 1:4000,IHC,1:50 - 1:200
Comment:	HIGH QUALITY
Restrictions:	For Research Use only

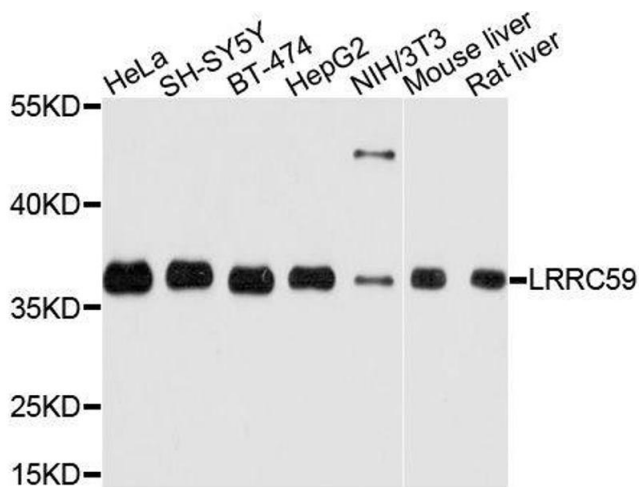
Handling

Format:	Liquid
Buffer:	PBS with 0.02 % sodium azide,50 % glycerol, pH 7.3.
Preservative:	Sodium azide
Precaution of Use:	This product contains Sodium azide: a POISONOUS AND HAZARDOUS SUBSTANCE which should be handled by trained staff only.
Storage:	-20 °C
Storage Comment:	Store at -20°C. Avoid freeze / thaw cycles.



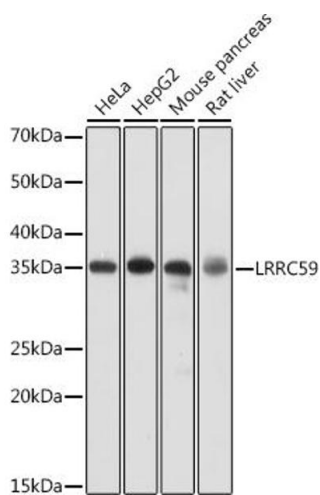
Immunohistochemistry

Image 1. Immunohistochemistry of paraffin-embedded mouse stomach using LRRC59 Rabbit pAb at dilution of 1:100 (40x lens). Perform high pressure antigen retrieval with 10 mM citrate buffer pH 6.0 before commencing with IHC staining protocol.



Western Blotting

Image 2. Western blot analysis of extracts of various cell lines, using LRRC59 antibody.



Western Blotting

Image 3. Western blot analysis of extracts of various cell lines, using LRRC59 antibody at 1:1000 dilution. Secondary antibody: HRP Goat Anti-Rabbit IgG (H+L) (ABIN1684268 and ABIN3020597) at 1:10000 dilution. Lysates/proteins: 25 µg per lane. Blocking buffer: 3% nonfat dry milk in TBST. Detection: ECL Basic Kit (RM00020). Exposure time: 1s.

Please check the [product details page](#) for more images. Overall 6 images are available for ABIN6143345.