



Datasheet for ABIN6143353  
**anti-LSM1 antibody (AA 1-133)**



[Go to Product page](#)

2 Images

Overview

Quantity:	100 µL
Target:	LSM1
Binding Specificity:	AA 1-133
Reactivity:	Human
Host:	Rabbit
Clonality:	Polyclonal
Conjugate:	This LSM1 antibody is un-conjugated
Application:	Western Blotting (WB), Immunofluorescence (IF)

Product Details

Immunogen:	Recombinant fusion protein containing a sequence corresponding to amino acids 1-133 of human LSM1 (NP_055277.1).
Sequence:	MNYMPGTASL IEDIDKKHLV LLRDGRTLIG FLRSIDQFAN LVLHQTVERI HVGKKYGDIP RGIFVVRGEN VVLLGEIDLE KESDTPLQQV SIEEILEEQR VEQQTGLEAE KLKVQALKDR GLSIPRADTL DEY
Isotype:	IgG
Cross-Reactivity:	Human, Mouse
Characteristics:	Polyclonal Antibodies

Target Details

Target:	LSM1
---------	------

## Target Details

---

Alternative Name: [LSM1 \(LSM1 Products\)](#)

---

Background: This gene encodes a member of the LSm family of RNA-binding proteins. LSm proteins form stable heteromers that bind specifically to the 3'-terminal oligo(U) tract of U6 snRNA and may play a role in pre-mRNA splicing by mediating U4/U6 snRNP formation. Increased expression of this gene may play a role in cellular transformation and the progression of several malignancies including lung cancer, mesothelioma and breast cancer. Alternatively spliced transcript variants have been observed for this gene, and a pseudogene of this gene is located on the short arm of chromosome 9.,LSM1,CASM,YJL124C,Epigenetics & Nuclear Signaling,RNA Binding,LSM1

---

Molecular Weight: 15 kDa

---

Gene ID: 27257

---

UniProt: [O15116](#)

---

## Application Details

---

Application Notes: WB,1:500 - 1:2000,IF,1:50 - 1:200

---

Comment: HIGH QUALITY

---

Restrictions: For Research Use only

---

## Handling

---

Format: Liquid

---

Buffer: PBS with 0.02 % sodium azide,50 % glycerol, pH 7.3.

---

Preservative: Sodium azide

---

Precaution of Use: This product contains Sodium azide: a POISONOUS AND HAZARDOUS SUBSTANCE which should be handled by trained staff only.

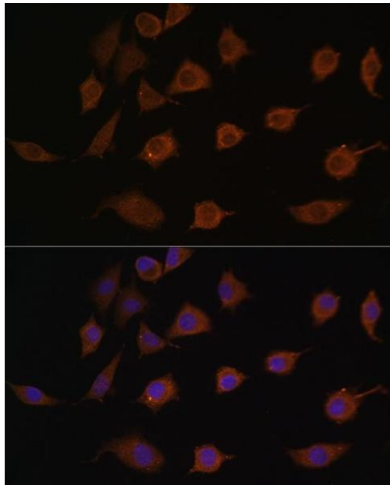
---

Storage: -20 °C

---

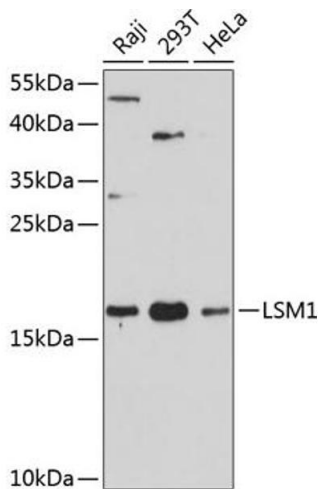
Storage Comment: Store at -20°C. Avoid freeze / thaw cycles.

---



### Immunofluorescence

**Image 1.** Immunofluorescence analysis of L929 cells using LSM1 antibody (ABIN6131868, ABIN6143353, ABIN6143354 and ABIN6216476) at dilution of 1:100. Blue: DAPI for nuclear staining.



### Western Blotting

**Image 2.** Western blot analysis of extracts of various cell lines, using LSM1 antibody (ABIN6131868, ABIN6143353, ABIN6143354 and ABIN6216476) at 1:3000 dilution. Secondary antibody: HRP Goat Anti-Rabbit IgG (H+L) (ABIN1684268 and ABIN3020597) at 1:10000 dilution. Lysates/proteins: 25 µg per lane. Blocking buffer: 3 % nonfat dry milk in TBST. Detection: ECL Basic Kit (RM00020). Exposure time: 30s.