



[Go to Product page](#)

Datasheet for ABIN6143358
anti-LSM2 antibody (AA 1-95)

1 Image

Overview

Quantity:	100 µL
Target:	LSM2
Binding Specificity:	AA 1-95
Reactivity:	Human
Host:	Rabbit
Clonality:	Polyclonal
Conjugate:	This LSM2 antibody is un-conjugated
Application:	Western Blotting (WB)

Product Details

Immunogen:	Recombinant fusion protein containing a sequence corresponding to amino acids 1-95 of human LSM2 (NP_067000.1).
Sequence:	MLFYFFKSL VGKDVVVELK NDLSICGLH SVDQYLNKIL TDISVTDPEK YPHMLSVKNC FIRGSVVRYV QLPADVDVTQ LLQDAARKEA LQQKQ
Isotype:	IgG
Cross-Reactivity:	Human
Characteristics:	Polyclonal Antibodies

Target Details

Target:	LSM2
---------	------

Target Details

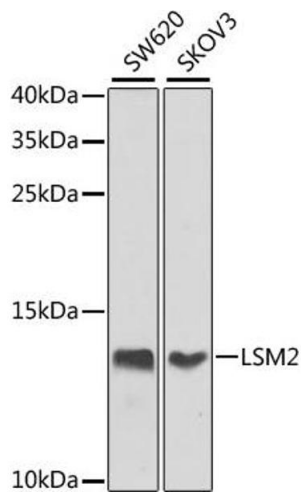
Alternative Name:	LSM2 (LSM2 Products)
Background:	This gene encodes a member of the LSm family of RNA-binding proteins. LSm proteins form stable heteromers that bind specifically to the 3'-terminal oligo(U) tract of U6 snRNA and may play a role in pre-mRNA splicing by mediating U4/U6 snRNP formation. Pseudogenes of this gene are located on the short arm of chromosomes 6 and 19.,LSM2,C6orf28,G7B,YBL026W,snRNP,Epigenetics & Nuclear Signaling,RNA Binding,LSM2
Molecular Weight:	10 kDa
Gene ID:	57819
UniProt:	Q9Y333
Pathways:	Ribonucleoprotein Complex Subunit Organization

Application Details

Application Notes:	WB,1:500 - 1:2000
Comment:	HIGH QUALITY
Restrictions:	For Research Use only

Handling

Format:	Liquid
Buffer:	PBS with 0.02 % sodium azide,50 % glycerol, pH 7.3.
Preservative:	Sodium azide
Precaution of Use:	This product contains Sodium azide: a POISONOUS AND HAZARDOUS SUBSTANCE which should be handled by trained staff only.
Storage:	-20 °C
Storage Comment:	Store at -20°C. Avoid freeze / thaw cycles.



Western Blotting

Image 1. Western blot analysis of extracts of various cell lines, using LSM2 antibody (ABIN6131870, ABIN6143358, ABIN6143359 and ABIN6224004) at 1:1000 dilution. Secondary antibody: HRP Goat Anti-Rabbit IgG (H+L) (ABIN1684268 and ABIN3020597) at 1:10000 dilution. Lysates/proteins: 25 µg per lane. Blocking buffer: 3 % nonfat dry milk in TBST. Detection: ECL Enhanced Kit (RM00021). Exposure time: 30s.