

Datasheet for ABIN6143360  
**anti-LSM3 antibody (AA 1-102)**[Go to Product page](#)

## 1 Image

## Overview

Quantity:	100 µL
Target:	LSM3
Binding Specificity:	AA 1-102
Reactivity:	Human
Host:	Rabbit
Clonality:	Polyclonal
Conjugate:	This LSM3 antibody is un-conjugated
Application:	Western Blotting (WB)

## Product Details

Immunogen:	Recombinant fusion protein containing a sequence corresponding to amino acids 1-102 of human LSM3 (NP_055278.1).
Sequence:	MADDVDQQQT TNTVEEPLDL IRLSLDERIY VKMRNDREL R GRLHAYDQHL NMILGDVEET VTTIEIDEET YEEIYKSTKR NIPMLFVRGD GVVLVAPPLR VG
Isotype:	IgG
Cross-Reactivity:	Human, Mouse
Characteristics:	Polyclonal Antibodies

## Target Details

Target:	LSM3
---------	------

## Target Details

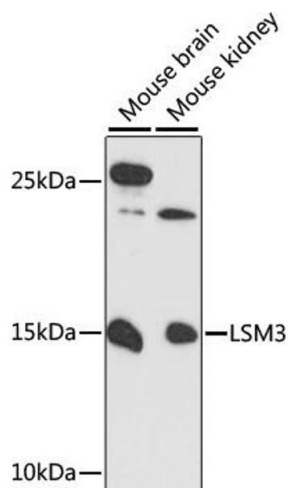
Alternative Name:	LSM3 ( <a href="#">LSM3 Products</a> )
Background:	Sm-like proteins were identified in a variety of organisms based on sequence homology with the Sm protein family (see SNRPD2, MIM 601061). Sm-like proteins contain the Sm sequence motif, which consists of 2 regions separated by a linker of variable length that folds as a loop. The Sm-like proteins are thought to form a stable heteromer present in tri-snRNP particles, which are important for pre-mRNA splicing.[supplied by OMIM, Apr 2004],LSM3,SMX4,USS2,YLR438C,Epigenetics & Nuclear Signaling,RNA Binding,LSM3
Molecular Weight:	11 kDa
Gene ID:	27258
UniProt:	<a href="#">P62310</a>

## Application Details

Application Notes:	WB,1:500 - 1:2000
Comment:	HIGH QUALITY
Restrictions:	For Research Use only

## Handling

Format:	Liquid
Buffer:	PBS with 0.02 % sodium azide,50 % glycerol, pH 7.3.
Preservative:	Sodium azide
Precaution of Use:	This product contains Sodium azide: a POISONOUS AND HAZARDOUS SUBSTANCE which should be handled by trained staff only.
Storage:	-20 °C
Storage Comment:	Store at -20°C. Avoid freeze / thaw cycles.



### Western Blotting

**Image 1.** Western blot analysis of extracts of various cell lines, using LSM3 antibody (ABIN6131052, ABIN6143360, ABIN6143361 and ABIN6217093) at 1:3000 dilution. Secondary antibody: HRP Goat Anti-Rabbit IgG (H+L) (ABIN1684268 and ABIN3020597) at 1:10000 dilution. Lysates/proteins: 25 µg per lane. Blocking buffer: 3 % nonfat dry milk in TBST. Detection: ECL Enhanced Kit (RM00021). Exposure time: 90s.