

Datasheet for ABIN6143388  
**anti-LUM antibody (AA 19-338)**



[Go to Product page](#)

2 Images

Overview

Quantity:	100 µL
Target:	LUM
Binding Specificity:	AA 19-338
Reactivity:	Human
Host:	Rabbit
Clonality:	Polyclonal
Conjugate:	This LUM antibody is un-conjugated
Application:	Western Blotting (WB), Immunofluorescence (IF)

Product Details

Immunogen:	Recombinant fusion protein containing a sequence corresponding to amino acids 19-338 of human Lumican (LUM)ican (Lumican (LUM)) (NP_002336.1).
Sequence:	QYYDYDFPLS IYGQSSPNCA PECNCPESYP SAMYCDELKL KSVPMVPPGI KYLYLRNNQI DHIDEKAFEN VTDLQWLILD HNLLNSKIK GRVFSKLGKQL KKLHINHNNL TESVGPLPKS LEDLQLTHNK ITKLGSFEGV VNLTFIHLQH NRLKEDAVSA AFKGLKSLEY LDLSFNQIAR LPSGLPVSLT TLYLDNNKIS NIPDEYFKRF NALQYLRLSH NELADSGIPG NSFNVSSLVE LDLSYNKLN IPTVNENLEN YYLEVNQLEK FDIKSFKIL GPLSYSKIKH LRLDGNRISE TSLPPDMYEC LRVANEVTLN
Isotype:	IgG
Cross-Reactivity:	Human, Mouse, Rat
Characteristics:	Polyclonal Antibodies

## Target Details

---

Target:	LUM
Alternative Name:	LUM ( <a href="#">LUM Products</a> )
Background:	<p>This gene encodes a member of the small leucine-rich proteoglycan (SLRP) family that includes decorin, biglycan, fibromodulin, keratocan, epiphycan, and osteoglycin. In these bifunctional molecules, the protein moiety binds collagen fibrils and the highly charged hydrophilic glycosaminoglycans regulate interfibrillar spacings. Lumican is the major keratan sulfate proteoglycan of the cornea but is also distributed in interstitial collagenous matrices throughout the body. Lumican may regulate collagen fibril organization and circumferential growth, corneal transparency, and epithelial cell migration and tissue repair.,LUM,LDC,SLRR2D,lumican,Cancer,Invasion and Metastasis,Signal Transduction,Cell Biology &amp; Developmental Biology,Cytoskeleton,Extracellular Matrix,LUM</p>
Molecular Weight:	38 kDa
Gene ID:	4060
UniProt:	<a href="#">P51884</a>
Pathways:	<a href="#">Glycosaminoglycan Metabolic Process</a>

## Application Details

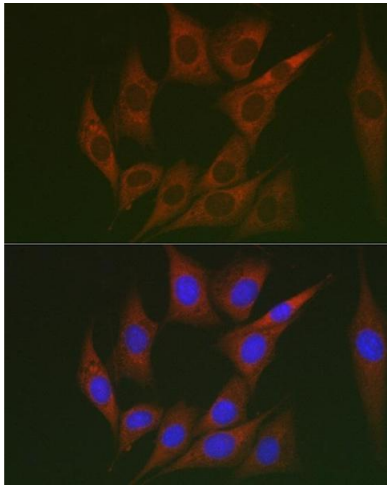
---

Application Notes:	WB,1:500 - 1:2000,IF,1:50 - 1:200
Comment:	HIGH QUALITY
Restrictions:	For Research Use only

## Handling

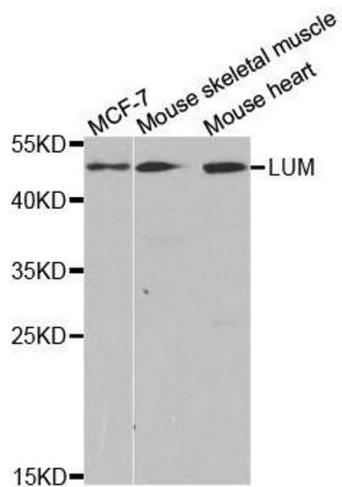
---

Format:	Liquid
Buffer:	PBS with 0.02 % sodium azide,50 % glycerol, pH 7.3.
Preservative:	Sodium azide
Precaution of Use:	This product contains Sodium azide: a POISONOUS AND HAZARDOUS SUBSTANCE which should be handled by trained staff only.
Storage:	-20 °C
Storage Comment:	Store at -20°C. Avoid freeze / thaw cycles.



### Immunofluorescence

**Image 1.** Immunofluorescence analysis of NIH/3T3 cells using Lumican (LUM) Rabbit pAb (ABIN6128190, ABIN6143388, ABIN6143389 and ABIN6220988) at dilution of 1:100 (40x lens). Blue: DAPI for nuclear staining.



### Western Blotting

**Image 2.** Western blot analysis of extracts of various cell lines, using LUM antibody.