



Datasheet for ABIN6143409  
**anti-LYZ antibody (AA 1-100)**



[Go to Product page](#)

5 Images

Overview

Quantity:	100 µL
Target:	LYZ
Binding Specificity:	AA 1-100
Reactivity:	Human
Host:	Rabbit
Clonality:	Polyclonal
Conjugate:	This LYZ antibody is un-conjugated
Application:	Western Blotting (WB), Immunohistochemistry (IHC), Immunofluorescence (IF)

Product Details

Immunogen:	A synthetic peptide corresponding to a sequence within amino acids 1-100 of human Lysozyme (Lysozyme (LYZ)) (NP_000230.1).
Sequence:	MKALIVLGLV LLSVTVQGKV FERCELARTL KRLGMDGYRG ISLANWMCLA KWESGYNTRA TNYNAGDRST DYGIFQINSR YWCNDGKTPG AVNACHLSCS
Isotype:	IgG
Cross-Reactivity:	Human, Mouse
Characteristics:	Polyclonal Antibodies

Target Details

Target:	LYZ
---------	-----

## Target Details

---

Alternative Name: [LYZ \(LYZ Products\)](#)

---

Background: This gene encodes human lysozyme, whose natural substrate is the bacterial cell wall peptidoglycan (cleaving the beta[1-4]glycosidic linkages between N-acetylmuramic acid and N-acetylglucosamine). Lysozyme is one of the antimicrobial agents found in human milk, and is also present in spleen, lung, kidney, white blood cells, plasma, saliva, and tears. The protein has antibacterial activity against a number of bacterial species. Missense mutations in this gene have been identified in heritable renal amyloidosis.,LYZ,LYZF1,LZM,lysozyme,Immunology & Inflammation,Cell Intrinsic Innate Immunity Signaling Pathway,Cardiovascular,Blood,LYZ

---

Molecular Weight: 16 kDa

---

Gene ID: 4069

---

UniProt: [P61626](#)

---

## Application Details

---

Application Notes: WB,1:500 - 1:2000,IHC,1:50 - 1:200,IF,1:50 - 1:200

---

Restrictions: For Research Use only

---

## Handling

---

Format: Liquid

---

Buffer: PBS with 0.02 % sodium azide,50 % glycerol, pH 7.3.

---

Preservative: Sodium azide

---

Precaution of Use: This product contains Sodium azide: a POISONOUS AND HAZARDOUS SUBSTANCE which should be handled by trained staff only.

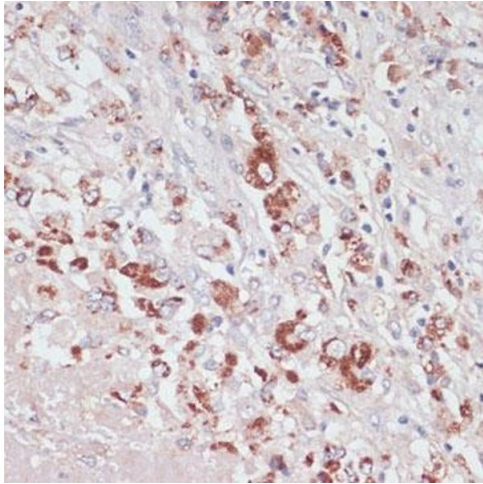
---

Storage: -20 °C

---

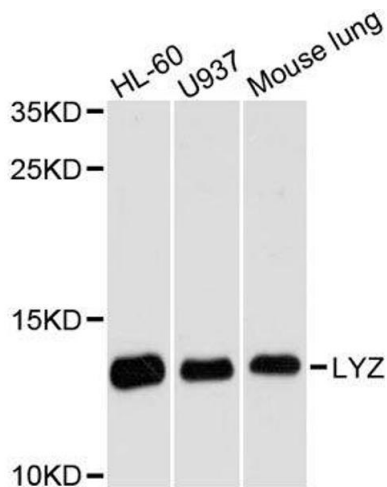
Storage Comment: Store at -20°C. Avoid freeze / thaw cycles.

---



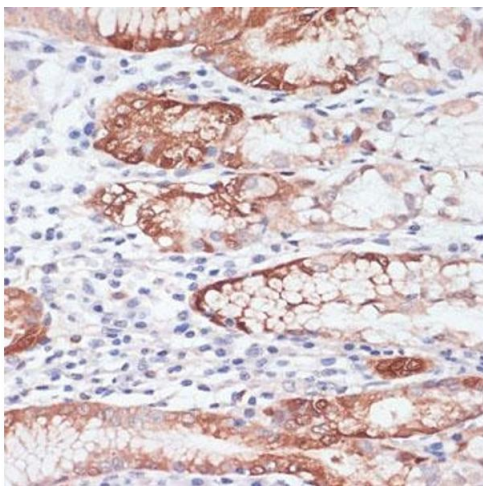
### Immunohistochemistry

**Image 1.** Immunohistochemistry of paraffin-embedded human liver cancer using Lysozyme (Lysozyme (LYZ)) antibody (ABIN6133802, ABIN6143409, ABIN6143412 and ABIN6217538) at dilution of 1:100 (40x lens). Perform microwave antigen retrieval with 10 mM PBS buffer pH 7.2 before commencing with IHC staining protocol.



### Western Blotting

**Image 2.** Western blot analysis of extracts of various cell lines, using LYZ antibody.



### Immunohistochemistry

**Image 3.** Immunohistochemistry of paraffin-embedded human stomach using Lysozyme (Lysozyme (LYZ)) antibody (ABIN6133802, ABIN6143409, ABIN6143412 and ABIN6217538) at dilution of 1:100 (40x lens). Perform microwave antigen retrieval with 10 mM PBS buffer pH 7.2 before commencing with IHC staining protocol.

Please check the [product details page](#) for more images. Overall 5 images are available for ABIN6143409.