

Datasheet for ABIN6143456
anti-MAN2B1 antibody (AA 640-850)[Go to Product page](#)

1 Image

Overview

Quantity:	100 µL
Target:	MAN2B1
Binding Specificity:	AA 640-850
Reactivity:	Human
Host:	Rabbit
Clonality:	Polyclonal
Conjugate:	This MAN2B1 antibody is un-conjugated
Application:	Western Blotting (WB)

Product Details

Immunogen:	Recombinant fusion protein containing a sequence corresponding to amino acids 640-850 of human MAN2B1 (NP_000519.2).
Sequence:	TFFWYNASIG DNESDQASGA YIFRPNQKKP LPVSRWAQIH LVKTPLVQEV HQNFSAWCSQ VVRLYPGQRH LELEWSVGPI PVGDTWGKEV ISRFDTPLET KGRFYTDSNG REILERRRDY RPTWKLNQTE PVAGNYYPVN TRIYITDGNM QLTVLTDRSQ GGSSLRDGS LELMVHRRLLK DDGRGVSEPL MENGSGAWVR GRHLVLLDTA Q
Isotype:	IgG
Cross-Reactivity:	Mouse
Characteristics:	Polyclonal Antibodies

Target Details

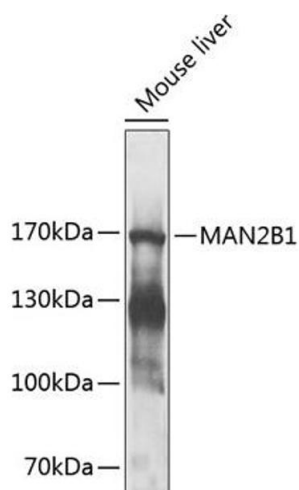
Target:	MAN2B1
Alternative Name:	MAN2B1 (MAN2B1 Products)
Background:	<p>This gene encodes an enzyme that hydrolyzes terminal, non-reducing alpha-D-mannose residues in alpha-D-mannosides. Its activity is necessary for the catabolism of N-linked carbohydrates released during glycoprotein turnover and it is member of family 38 of glycosyl hydrolases. The full length protein is processed in two steps. First, a 49 aa leader sequence is cleaved off and the remainder of the protein is processed into 3 peptides of 70 kDa, 42 kDa (D) and 13/15 kDa (E). Next, the 70 kDa peptide is further processed into three peptides (A, B and C). The A, B and C peptides are disulfide-linked. Defects in this gene have been associated with lysosomal alpha-mannosidosis. Alternatively spliced transcript variants encoding different isoforms have been found for this gene.,MAN2B1,LAMAN,MANB,Cancer,Signal Transduction,Endocrine & Metabolism,Neuroscience,MAN2B1</p>
Molecular Weight:	113 kDa
Gene ID:	4125
UniProt:	O00754

Application Details

Application Notes:	WB,1:500 - 1:2000
Restrictions:	For Research Use only

Handling

Format:	Liquid
Buffer:	PBS with 0.02 % sodium azide,50 % glycerol, pH 7.3.
Preservative:	Sodium azide
Precaution of Use:	This product contains Sodium azide: a POISONOUS AND HAZARDOUS SUBSTANCE which should be handled by trained staff only.
Storage:	-20 °C
Storage Comment:	Store at -20°C. Avoid freeze / thaw cycles.



Western Blotting

Image 1. Western blot analysis of extracts of mouse liver, using MB1 antibody (ABIN6131403, ABIN6143456, ABIN6143457 and ABIN6225266) at 1:1000 dilution. Secondary antibody: HRP Goat Anti-Rabbit IgG (H+L) (ABIN1684268 and ABIN3020597) at 1:10000 dilution. Lysates/proteins: 25 µg per lane. Blocking buffer: 3 % nonfat dry milk in TBST. Detection: ECL Enhanced Kit (RM00021). Exposure time: 30s.