

Datasheet for ABIN6143466
anti-MAP1LC3A antibody (AA 1-100)



[Go to Product page](#)

3 Images

Overview

Quantity:	100 µL
Target:	MAP1LC3A
Binding Specificity:	AA 1-100
Reactivity:	Human
Host:	Rabbit
Clonality:	Polyclonal
Conjugate:	This MAP1LC3A antibody is un-conjugated
Application:	Western Blotting (WB), Immunohistochemistry (IHC)

Product Details

Immunogen:	A synthetic peptide corresponding to a sequence within amino acids 1-100 of human MAP1LC3A (NP_115903.1).
Sequence:	MPSDRPFKQR RSFADRCKEV QQIRDQHPSK IPVIIERYKG EKQLPVLDKT KFLVPDHVNM SELVKIIRRR LQLNPTQAFF LLVNQHSMVS VSTPIADIYE
Isotype:	IgG
Cross-Reactivity:	Mouse, Rat
Characteristics:	Polyclonal Antibodies

Target Details

Target:	MAP1LC3A
---------	----------

Target Details

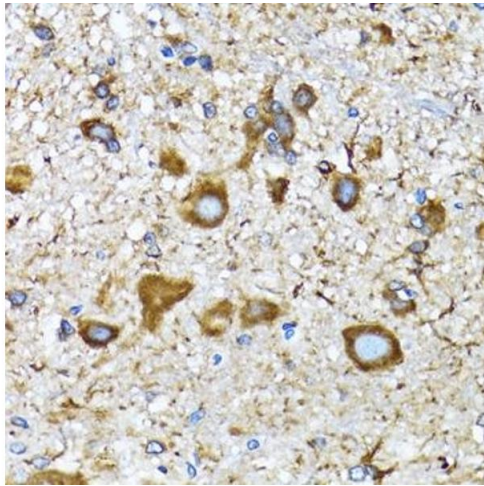
Alternative Name:	MAP1LC3A (MAP1LC3A Products)
Background:	<p>MAP1A and MAP1B are microtubule-associated proteins which mediate the physical interactions between microtubules and components of the cytoskeleton. MAP1A and MAP1B each consist of a heavy chain subunit and multiple light chain subunits. The protein encoded by this gene is one of the light chain subunits and can associate with either MAP1A or MAP1B. Two transcript variants encoding different isoforms have been found for this gene. The expression of variant 1 is suppressed in many tumor cell lines, suggesting that may be involved in carcinogenesis.,MAP1LC3A,ATG8E,LC3,LC3A,MAP1ALC3,MAP1BLC3,Cancer,Signal Transduction,Cell Biology & Developmental Biology,Autophagy,Cytoskeleton,Microtubules,Endocrine & Metabolism,Mitochondrial metabolism,Cardiovascular,Heart,ATGs,MAP1LC3A</p>
Molecular Weight:	14 kDa
Gene ID:	84557
UniProt:	Q9H492
Pathways:	Autophagy

Application Details

Application Notes:	WB,1:500 - 1:2000,IHC,1:50 - 1:200
Comment:	HIGH QUALITY
Restrictions:	For Research Use only

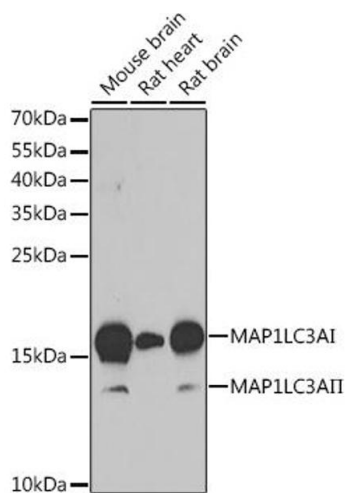
Handling

Format:	Liquid
Buffer:	PBS with 0.02 % sodium azide,50 % glycerol, pH 7.3.
Preservative:	Sodium azide
Precaution of Use:	This product contains Sodium azide: a POISONOUS AND HAZARDOUS SUBSTANCE which should be handled by trained staff only.
Storage:	-20 °C
Storage Comment:	Store at -20°C. Avoid freeze / thaw cycles.



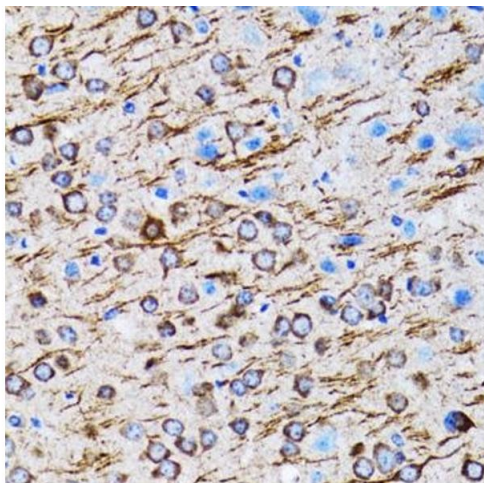
Immunohistochemistry

Image 1. Immunohistochemistry of paraffin-embedded mouse spinal cord using MLC3A antibody (ABIN6134219, ABIN6143466, ABIN6143468 and ABIN6215215) at dilution of 1:100 (40x lens). Perform microwave antigen retrieval with 10 mM PBS buffer pH 7.2 before commencing with IHC staining protocol.



Western Blotting

Image 2. Western blot analysis of extracts of various cell lines, using MLC3A antibody (ABIN6134219, ABIN6143466, ABIN6143468 and ABIN6215215) at 1:1000 dilution. Secondary antibody: HRP Goat Anti-Rabbit IgG (H+L) (ABIN1684268 and ABIN3020597) at 1:10000 dilution. Lysates/proteins: 25 µg per lane. Blocking buffer: 3 % nonfat dry milk in TBST. Detection: ECL Basic Kit (RM00020). Exposure time: 90s.



Immunohistochemistry

Image 3. Immunohistochemistry of paraffin-embedded rat brain using MLC3A antibody (ABIN6134219, ABIN6143466, ABIN6143468 and ABIN6215215) at dilution of 1:100 (40x lens). Perform microwave antigen retrieval with 10 mM PBS buffer pH 7.2 before commencing with IHC staining protocol.