

Datasheet for ABIN6143503
anti-MAP3K7 antibody (AA 300-470)



[Go to Product page](#)

7 Images

Overview

Quantity:	100 µL
Target:	MAP3K7
Binding Specificity:	AA 300-470
Reactivity:	Human
Host:	Rabbit
Clonality:	Polyclonal
Conjugate:	This MAP3K7 antibody is un-conjugated
Application:	Western Blotting (WB), Immunohistochemistry (IHC), Immunofluorescence (IF)

Product Details

Immunogen:	Recombinant fusion protein containing a sequence corresponding to amino acids 300-470 of human TAK1 (NP_003179.1).
Sequence:	YPCQYSDEGQ SNSATSTGSF MDIASNTNSN KSDTNMEQVP ATNDTIKRLK SKLLKNQAKQ QSESGRLSLG ASRGSSVESL PPTSEGKRMS ADMSEIARI AATTGNGQPR RRSIQDLTVT GTEPGQVSSR SSSPSVRMIT TSGPTSEKPT RSHPWTPDDS TDTNGSDNSI P
Isotype:	IgG
Cross-Reactivity:	Human, Mouse, Rat
Characteristics:	Polyclonal Antibodies

Target Details

Target:	MAP3K7
---------	--------

Target Details

Alternative Name: [MAP3K7 \(MAP3K7 Products\)](#)

Background: The protein encoded by this gene is a member of the serine/threonine protein kinase family. This kinase mediates the signaling transduction induced by TGF beta and morphogenetic protein (BMP), and controls a variety of cell functions including transcription regulation and apoptosis. In response to IL-1, this protein forms a kinase complex including TRAF6, MAP3K7P1/TAB1 and MAP3K7P2/TAB2, this complex is required for the activation of nuclear factor kappa B. This kinase can also activate MAPK8/JNK, MAP2K4/MKK4, and thus plays a role in the cell response to environmental stresses. Four alternatively spliced transcript variants encoding distinct isoforms have been reported.

[CSCF](#), [FMD2](#), [MEKK7](#), [TAK1](#), [TGF1a](#), [MAP3K7](#), [Cancer](#), [Signal Transduction](#), [G protein signaling](#), [G2/M DNA Damage Checkpoint](#), [Kinase](#), [Serine/threonine kinases](#), [Tyrosine kinases](#), [MAPK-Erk Signaling Pathway](#), [MAPK-JNK Signaling Pathway](#), [MAPK-P38 Signaling Pathway](#), [Cell Biology & Developmental Biology](#), [Apoptosis](#), [Inhibition of Apoptosis](#), [Cytoskeleton](#), [Actins](#), [TGF-b-Smad Signaling Pathway](#), [Wnt/β-Catenin Signaling Pathway](#), [Immunology & Inflammation](#), [B Cell Receptor Signaling Pathway](#), [T Cell Receptor Signaling Pathway](#), [NF-kB Signaling Pathway](#), [Toll-like Receptor Signaling Pathway](#), [Cell Intrinsic Innate Immunity Signaling Pathway](#), [TLR Signaling](#), [Cardiovascular](#), [MAP3K7](#)

Molecular Weight: 53 kDa/56 kDa/64 kDa/67 kDa

Gene ID: 6885

UniProt: [O43318](#)

Pathways: [NF-kappaB Signaling](#), [TCR Signaling](#), [TLR Signaling](#), [Fc-epsilon Receptor Signaling Pathway](#), [Activation of Innate immune Response](#), [Regulation of Leukocyte Mediated Immunity](#), [Positive Regulation of Immune Effector Process](#), [Production of Molecular Mediator of Immune Response](#), [Tube Formation](#), [Toll-Like Receptors Cascades](#), [BCR Signaling](#), [Ubiquitin Proteasome Pathway](#)

Application Details

Application Notes: WB,1:500 - 1:2000,IHC,1:50 - 1:200,IF,1:50 - 1:200

Restrictions: For Research Use only

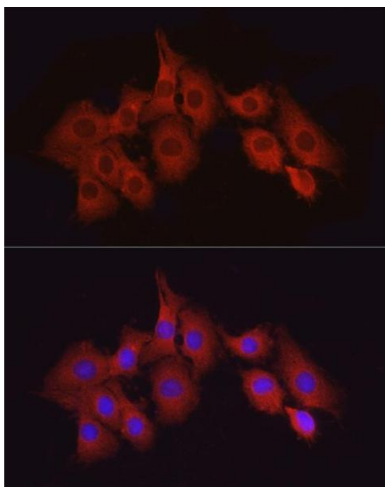
Handling

Format: Liquid

Handling

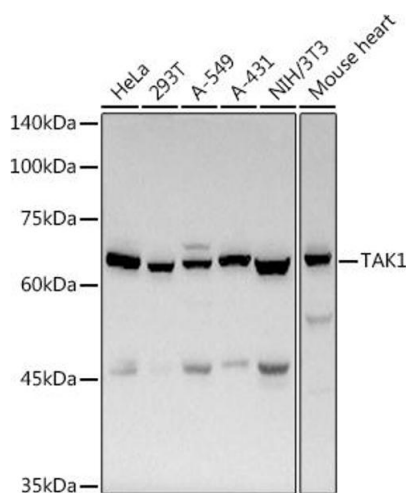
Buffer:	PBS with 0.02 % sodium azide, 50 % glycerol, pH 7.3.
Preservative:	Sodium azide
Precaution of Use:	This product contains Sodium azide: a POISONOUS AND HAZARDOUS SUBSTANCE which should be handled by trained staff only.
Storage:	-20 °C
Storage Comment:	Store at -20°C. Avoid freeze / thaw cycles.

Images



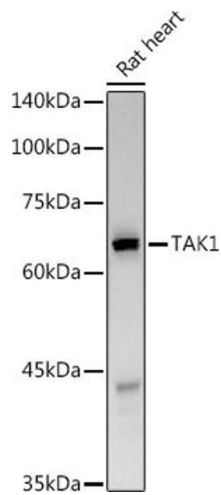
Immunofluorescence

Image 1. Immunofluorescence analysis of PC-12 cells using T Rabbit pAb (ABIN6130537, ABIN6143503, ABIN6143504 and ABIN6215581) at dilution of 1:50 (40x lens). Blue: DAPI for nuclear staining.



Western Blotting

Image 2. Western blot analysis of extracts of various cell lines, using T antibody (ABIN6130537, ABIN6143503, ABIN6143504 and ABIN6215581) at 1:500 dilution. Secondary antibody: HRP Goat Anti-Rabbit IgG (H+L) (ABIN1684268 and ABIN3020597) at 1:10000 dilution. Lysates/proteins: 25 µg per lane. Blocking buffer: 3 % nonfat dry milk in TBST. Detection: ECL Basic Kit (RM00020). Exposure time: 3s.



Western Blotting

Image 3. Western blot analysis of extracts of Rat heart, using T antibody (ABIN6130537, ABIN6143503, ABIN6143504 and ABIN6215581) at 1:500 dilution. Secondary antibody: HRP Goat Anti-Rabbit IgG (H+L) (ABIN1684268 and ABIN3020597) at 1:10000 dilution. Lysates/proteins: 25 µg per lane. Blocking buffer: 3 % nonfat dry milk in TBST. Detection: ECL Basic Kit (RM00020). Exposure time: 90s.

Please check the [product details page](#) for more images. Overall 7 images are available for ABIN6143503.