

Datasheet for ABIN6143520
anti-MAPK12 antibody (AA 248-367)



[Go to Product page](#)

1 Image

Overview

Quantity:	100 µL
Target:	MAPK12
Binding Specificity:	AA 248-367
Reactivity:	Human
Host:	Rabbit
Clonality:	Polyclonal
Conjugate:	This MAPK12 antibody is un-conjugated
Application:	Western Blotting (WB), Immunohistochemistry (IHC)

Product Details

Immunogen:	Recombinant fusion protein containing a sequence corresponding to amino acids 248-367 of human MAPK12 (NP_002960.2).
Sequence:	EFVQLQSDE AKNYMKGLPE LEKKDFASIL TNASPLAVNL LEKMLVLDAE QRVTAGAALA HPYFESLHDT EDEPQVQKYD DSFDDVDRTL DEWKRVTYKE VLSFKPPRQL GARVSKETPL
Isotype:	IgG
Cross-Reactivity:	Human, Mouse, Rat
Characteristics:	Polyclonal Antibodies

Target Details

Target:	MAPK12
---------	--------

Target Details

Alternative Name:	MAPK12 (MAPK12 Products)
Background:	Activation of members of the mitogen-activated protein kinase family is a major mechanism for transduction of extracellular signals. Stress-activated protein kinases are one subclass of MAP kinases. The protein encoded by this gene functions as a signal transducer during differentiation of myoblasts to myotubes.,MAPK12,ERK-6,ERK3,ERK6,MAPK 12,P38GAMMA,PRKM12,SAPK-3,SAPK3,Epigenetics & Nuclear Signaling,Translation Control,Regulation of eIF4 and p70 S6 Kinase,Signal Transduction,G protein signaling,G2/M DNA Damage Checkpoint,Kinase,Serine/threonine kinases,Phospholipase Signaling Pathway,ErbB-HER Signaling Pathway,MAPK-P38 Signaling Pathway,Cell Biology & Developmental Biology,Cell Cycle,Cell cycle inhibitors,Cell differentiation,TGF-b-Smad Signaling Pathway,Immunology & Inflammation,B Cell Receptor Signaling Pathway,T Cell Receptor Signaling Pathway,IL-6 Receptor Signaling Pathway,NF-kB Signaling Pathway,Toll-like Receptor Signaling Pathway,Neuroscience,Neurodegenerative Diseases,Cardiovascular,Angiogenesis,MAPK12
Molecular Weight:	40 kDa/41 kDa
Gene ID:	6300
UniProt:	P53778
Pathways:	MAPK Signaling , Neurotrophin Signaling Pathway , Regulation of Muscle Cell Differentiation , Hepatitis C , BCR Signaling , S100 Proteins

Application Details

Application Notes:	WB,1:2000 - 1:5000,IHC,1:50 - 1:200
Comment:	HIGH QUALITY
Restrictions:	For Research Use only

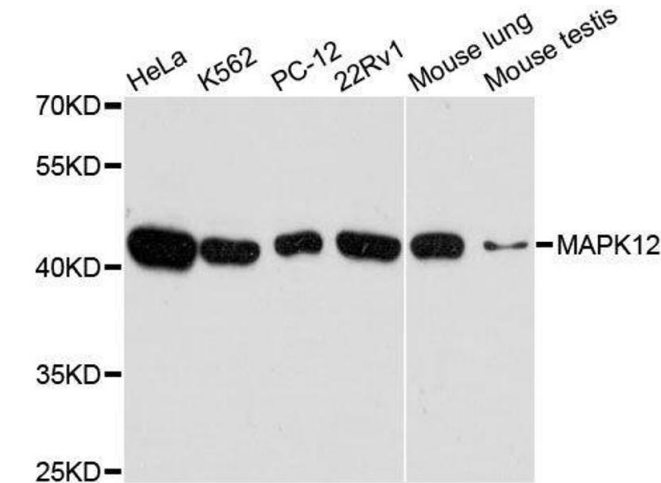
Handling

Format:	Liquid
Buffer:	PBS with 0.02 % sodium azide,50 % glycerol, pH 7.3.
Preservative:	Sodium azide
Precaution of Use:	This product contains Sodium azide: a POISONOUS AND HAZARDOUS SUBSTANCE which should be handled by trained staff only.

Handling

Storage:	-20 °C
Storage Comment:	Store at -20°C. Avoid freeze / thaw cycles.

Images



Western Blotting

Image 1. Western blot analysis of extracts of various cell lines, using MAPK12 antibody.