



[Go to Product page](#)

Datasheet for ABIN6143551
anti-MARCH8 antibody (AA 232-291)

1 Image

Overview

Quantity:	100 µL
Target:	MARCH8
Binding Specificity:	AA 232-291
Reactivity:	Human
Host:	Rabbit
Clonality:	Polyclonal
Conjugate:	This MARCH8 antibody is un-conjugated
Application:	Western Blotting (WB)

Product Details

Immunogen:	Recombinant fusion protein containing a sequence corresponding to amino acids 232-291 of human MARCH8 (NP_659458.2).
Sequence:	YNRVIYVQNC PETSCKKNIFE KSPLTEPNFE NKHGYGICHS DTNSSCCTEP EDTGAEIIHV
Isotype:	IgG
Cross-Reactivity:	Human, Mouse, Rat
Characteristics:	Polyclonal Antibodies
Purification:	Affinity purification

Target Details

Target:	MARCH8
---------	--------

Target Details

Alternative Name: 8-Mar ([MARCH8 Products](#))

Background: MARCH8 is a member of the MARCH family of membrane-bound E3 ubiquitin ligases (EC 6.3.2.19). MARCH enzymes add ubiquitin (see MIM 191339) to target lysines in substrate proteins, thereby signaling their vesicular transport between membrane compartments. MARCH8 induces the internalization of several membrane glycoproteins (Goto et al., 2003 [PubMed 12582153], Bartee et al., 2004 [PubMed 14722266]), MARCH8, CMIR, MARCH-VIII, MIR, RNF178, c-MIR, Cell Biology & Developmental Biology, Ubiquitin, Immunology & Inflammation, 8-Mar

Molecular Weight: 32 kDa/63 kDa

Gene ID: 220972

UniProt: [Q5T0T0](#)

Application Details

Application Notes: WB, 1:500 - 1:2000

Comment: HIGH QUALITY

Restrictions: For Research Use only

Handling

Format: Liquid

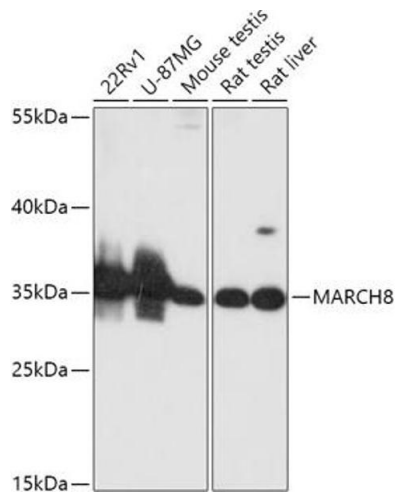
Buffer: PBS with 0.02 % sodium azide, 50 % glycerol, pH 7.3.

Preservative: Sodium azide

Precaution of Use: This product contains Sodium azide: a POISONOUS AND HAZARDOUS SUBSTANCE which should be handled by trained staff only.

Storage: -20 °C

Storage Comment: Store at -20°C. Avoid freeze / thaw cycles.



Western Blotting

Image 1. Western blot analysis of extracts of various cell lines, using M antibody (ABIN6133222, ABIN6143551, ABIN6143552 and ABIN6216789) at 1:1000 dilution. Secondary antibody: HRP Goat Anti-Rabbit IgG (H+L) (ABIN1684268 and ABIN3020597) at 1:10000 dilution. Lysates/proteins: 25 µg per lane. Blocking buffer: 3 % nonfat dry milk in TBST. Detection: ECL Basic Kit (RM00020). Exposure time: 60s.