



[Go to Product page](#)

Datasheet for ABIN6143574
anti-MAT2A antibody (AA 1-395)

1 Image

Overview

Quantity:	100 µL
Target:	MAT2A
Binding Specificity:	AA 1-395
Reactivity:	Human
Host:	Rabbit
Clonality:	Polyclonal
Conjugate:	This MAT2A antibody is un-conjugated
Application:	Western Blotting (WB)

Product Details

Immunogen:	Recombinant fusion protein containing a sequence corresponding to amino acids 1-395 of human MAT2A (NP_005902.1).
Sequence:	MNGQLNGFHE AFIEEGTFLF TSESVGEGHP DKICDQISDA VLDAHLQQDP DAKVACETVA KTGMILLAGE ITSRAAVDYQ KVVREAVKHI GYDDSSKGFY YKTCNVLVAL EQQSPDIAQG VHLDRNEEDI GAGDQGLMFG YATDETEECM PLTIVLAHKL NAKLAELRRN GTLPWLRPDS KTQVTVQYMQ DRGAVLPIRV HTIVISVQHD EEVCLDEM RD ALKEKVIKAV VPAKYLDEDT IYHLQPSGRF VIGGPQGDAG LTGRKIIVDT YGGWGAHGGG AFSGKDYTKV DRSAAYAARW VAKSLVKGGL CRRVLVQVSY AIGVSHPLSI SIFHYGTSQK SERELLEIVK KNFDLRPGVI VRDLDLKKPI YQRTAAYGHF GRDSFPWEVP KKLKY
Isotype:	IgG
Cross-Reactivity:	Human, Mouse, Rat

Product Details

Characteristics: Polyclonal Antibodies

Target Details

Target: MAT2A

Alternative Name: MAT2A ([MAT2A Products](#))

Background: The protein encoded by this gene catalyzes the production of S-adenosylmethionine (AdoMet) from methionine and ATP. AdoMet is the key methyl donor in cellular processes.,MAT2A,MATA2,MATII,SAMS2,Signal Transduction,Endocrine & Metabolism,Amino acid metabolism,MAT2A

Molecular Weight: 32 kDa/43 kDa

Gene ID: 4144

UniProt: [P31153](#)

Pathways: [Ribonucleoside Biosynthetic Process](#), [Methionine Biosynthetic Process](#)

Application Details

Application Notes: WB,1:500 - 1:2000

Comment: HIGH QUALITY

Restrictions: For Research Use only

Handling

Format: Liquid

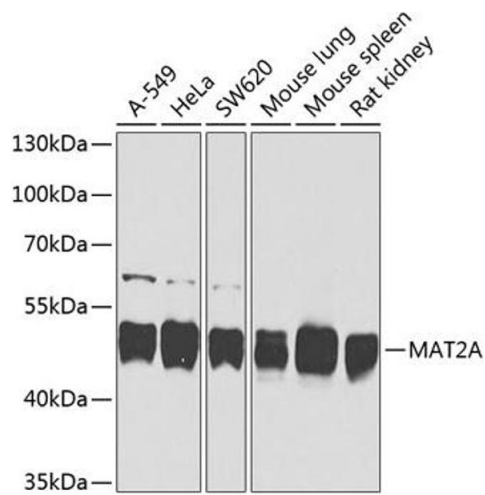
Buffer: PBS with 0.02 % sodium azide,50 % glycerol, pH 7.3.

Preservative: Sodium azide

Precaution of Use: This product contains Sodium azide: a POISONOUS AND HAZARDOUS SUBSTANCE which should be handled by trained staff only.

Storage: -20 °C

Storage Comment: Store at -20°C. Avoid freeze / thaw cycles.



Western Blotting

Image 1. Western blot analysis of extracts of various cell lines, using MA antibody (ABIN6132330, ABIN6143574, ABIN6143575 and ABIN6224497) at 1:1000 dilution. Secondary antibody: HRP Goat Anti-Rabbit IgG (H+L) (ABIN1684268 and ABIN3020597) at 1:10000 dilution. Lysates/proteins: 25 μ g per lane. Blocking buffer: 3% nonfat dry milk in TBST. Detection: ECL Basic Kit (RM00020). Exposure time: 15s.