



[Go to Product page](#)

Datasheet for ABIN6143576
anti-MAT2B antibody (AA 1-334)

1 Image

Overview

Quantity:	100 µL
Target:	MAT2B
Binding Specificity:	AA 1-334
Reactivity:	Human
Host:	Rabbit
Clonality:	Polyclonal
Conjugate:	This MAT2B antibody is un-conjugated
Application:	Western Blotting (WB)

Product Details

Immunogen:	Recombinant fusion protein containing a sequence corresponding to amino acids 1-334 of human MAT2B (NP_037415.1).
Sequence:	MVGREKELSI HFVPGSCLRV EEEVNIPNRR VLVTGATGLL GRAVHKEFQQ NNWHAVGCGF RRARPKFEQV NLLDSNAVHH IIHDFQPHVI VHCAERRPD VVENQPDAAS QLNVDASGNL AKEAAAVGAF LIYSSDYVF DGTNPPYREE DIPAPLNLYG KTKLDGEKAV LENNLGA AVL RIPILYGEVE KLEESAVTVM FDKVQFSNKS ANMDHWQQR F PTHVKDVATV CRQLAEKRML DPSIKGTFHW SGNEQMTKYE MACAIADAFN LPSSHLRPIT DSPVLGAQRP RNAQLDCSKL ETLIGIQRTP FRIGIKESLW PFLIDKRWRQ TVFH
Isotype:	IgG
Cross-Reactivity:	Human, Mouse
Characteristics:	Polyclonal Antibodies

Target Details

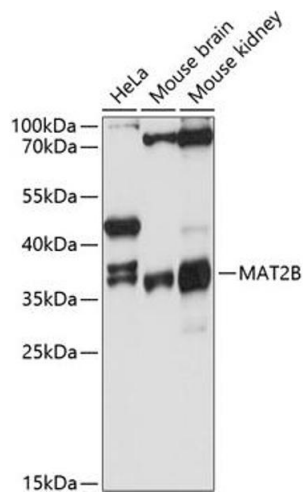
Target:	MAT2B
Alternative Name:	MAT2B (MAT2B Products)
Background:	<p>The protein encoded by this gene belongs to the methionine adenosyltransferase (MAT) family. MAT catalyzes the biosynthesis of S-adenosylmethionine from methionine and ATP. This protein is the regulatory beta subunit of MAT. Alternative splicing results in multiple transcript variants encoding different isoforms.,MAT2B,MAT-II,MATIIbeta,Nbla02999,SDR23E1,TGR,Cancer,Signal Transduction,Endocrine & Metabolism,Amino acid metabolism,MAT2B</p>
Molecular Weight:	9 kDa/28 kDa/34 kDa/36 kDa/37 kDa
Gene ID:	27430
UniProt:	Q9NZL9
Pathways:	Ribonucleoside Biosynthetic Process , Methionine Biosynthetic Process , SARS-CoV-2 Protein Interactome

Application Details

Application Notes:	WB,1:500 - 1:2000
Comment:	HIGH QUALITY
Restrictions:	For Research Use only

Handling

Format:	Liquid
Buffer:	PBS with 0.02 % sodium azide,50 % glycerol, pH 7.3.
Preservative:	Sodium azide
Precaution of Use:	This product contains Sodium azide: a POISONOUS AND HAZARDOUS SUBSTANCE which should be handled by trained staff only.
Storage:	-20 °C
Storage Comment:	Store at -20°C. Avoid freeze / thaw cycles.



Western Blotting

Image 1. Western blot analysis of extracts of various cell lines, using MB antibody (ABIN6128286, ABIN6143576, ABIN6143577 and ABIN6215296) at 1:3000 dilution. Secondary antibody: HRP Goat Anti-Rabbit IgG (H+L) (ABIN1684268 and ABIN3020597) at 1:10000 dilution. Lysates/proteins: 25 µg per lane. Blocking buffer: 3 % nonfat dry milk in TBST. Detection: ECL Basic Kit (RM00020). Exposure time: 30s.