

Datasheet for ABIN6143596

**anti-MAP2K5 antibody****2** Images[Go to Product page](#)

## Overview

Quantity:	100 µL
Target:	MAP2K5
Reactivity:	Human
Host:	Rabbit
Clonality:	Monoclonal
Conjugate:	This MAP2K5 antibody is un-conjugated
Application:	Western Blotting (WB)

## Product Details

Immunogen:	A synthesized peptide derived from human MEK5
Isotype:	IgG
Cross-Reactivity:	Human, Mouse, Rat
Characteristics:	Monoclonal Antibodies
Purification:	Affinity purification

## Target Details

Target:	MAP2K5
Alternative Name:	MAP2K5 ( <a href="#">MAP2K5 Products</a> )
Background:	The protein encoded by this gene is a dual specificity protein kinase that belongs to the MAP kinase kinase family. This kinase specifically interacts with and activates MAPK7/ERK5. This

## Target Details

kinase itself can be phosphorylated and activated by MAP3K3/MEKK3, as well as by atypical protein kinase C isoforms (aPKCs). The signal cascade mediated by this kinase is involved in growth factor stimulated cell proliferation and muscle cell differentiation. Three alternatively spliced transcript variants of this gene encoding distinct isoforms have been described.

[provided by RefSeq, May 2011],HsT17454, MAPKK5, MEK5,

PRKMK5,Cancer,Cardiovascular,Cell Biology & Developmental

Biology,Cytoskeleton,Cytoskeleton\_Actins,ErbB-HER Signaling Pathway,G protein signaling,G protein signaling\_G-Protein-Coupled Receptors Signaling to

MAPK/Erk,Heart,Heart\_Cardiogenesis,IL-6 Receptor Signaling Pathway,Immunology &

Inflammation,Kinase,Kinase\_Serine/threonine kinases,Signal Transduction,MAP2K5

Molecular Weight: 49 kDa

Gene ID: 5607

UniProt: [Q13163](#)

Pathways: [MAPK Signaling](#), [Neurotrophin Signaling Pathway](#)

## Application Details

Application Notes: WB,1:500 - 1:2000

Restrictions: For Research Use only

## Handling

Format: Liquid

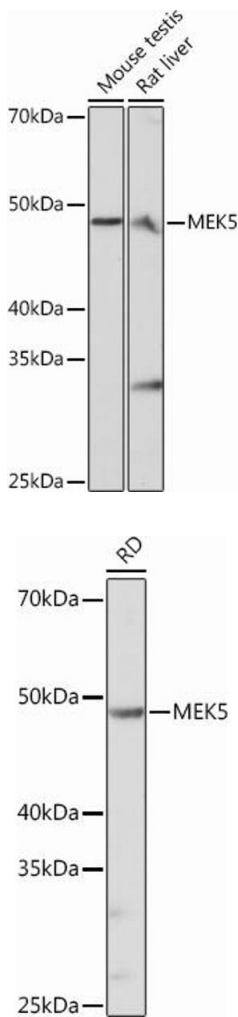
Buffer: PBS with 0.02 % sodium azide,0.05 % BSA,50 % glycerol, pH 7.3.

Preservative: Sodium azide

Precaution of Use: This product contains Sodium azide: a POISONOUS AND HAZARDOUS SUBSTANCE which should be handled by trained staff only.

Storage: -20 °C

Storage Comment: Store at -20°C. Avoid freeze / thaw cycles.



### Western Blotting

**Image 1.** Western blot analysis of extracts of various cell lines, using MEK5 Rabbit mAb (ABIN6132333, ABIN6143596, ABIN6143598 and ABIN7101401) at 1:1000 dilution. Secondary antibody: HRP Goat Anti-Rabbit IgG (H+L) (ABIN1684268 and ABIN3020597) at 1:10000 dilution. Lysates/proteins: 25 µg per lane. Blocking buffer: 3 % nonfat dry milk in TBST. Detection: ECL Basic Kit (RM00020). Exposure time: 3 min.

### Western Blotting

**Image 2.** Western blot analysis of extracts of RD cells, using MEK5 Rabbit mAb (ABIN6132333, ABIN6143596, ABIN6143598 and ABIN7101401) at 1:1000 dilution. Secondary antibody: HRP Goat Anti-Rabbit IgG (H+L) (ABIN1684268 and ABIN3020597) at 1:10000 dilution. Lysates/proteins: 25 µg per lane. Blocking buffer: 3 % nonfat dry milk in TBST. Detection: ECL Basic Kit (RM00020). Exposure time: 90s.