

Datasheet for ABIN6143639  
**anti-MCM10 antibody (AA 616-875)**[Go to Product page](#)

## 1 Image

## Overview

|                      |                                      |
|----------------------|--------------------------------------|
| Quantity:            | 100 µL                               |
| Target:              | MCM10                                |
| Binding Specificity: | AA 616-875                           |
| Reactivity:          | Human                                |
| Host:                | Rabbit                               |
| Clonality:           | Polyclonal                           |
| Conjugate:           | This MCM10 antibody is un-conjugated |
| Application:         | Western Blotting (WB)                |

## Product Details

|                   |  |
|-------------------|--|
| Immunogen:        | Recombinant fusion protein containing a sequence corresponding to amino acids 616-875 of human MCM10 (NP_877428.1).  |
| Sequence:         | RLEGAPATMT PKLGRGVLEG DDVLFYDESP PPRPKLSALA EAKKLAAITK LRAKGQVLTK<br>TNPNSIKKKQ KDPQDILEVK ERVEKNTMFS SQAEELEPA RKKRREQLAY LESEEFQKIL<br>KAKSKHTGIL KEAEAEMQER YFEPLVKKEQ MEEKMRNIRE VKCRVVTCKT CAYTHFKLLE<br>TCVSEQHEYH WHDGVKRFFK CPCGNRSISL DRLPNKHCSN CGLYKWERDG MLKEKTGPKI<br>GGETLLPRGE EHAKFLNSLK |
| Isotype:          | IgG  |
| Cross-Reactivity: | Human, Mouse, Rat  |
| Characteristics:  | Polyclonal Antibodies  |

## Target Details

|                   |   |
|-------------------|---|
| Target:           | MCM10   |
| Alternative Name: | MCM10 ( <a href="#">MCM10 Products</a> )  |
| Background:       | <p>The protein encoded by this gene is one of the highly conserved mini-chromosome maintenance proteins (MCM) that are involved in the initiation of eukaryotic genome replication. The hexameric protein complex formed by MCM proteins is a key component of the pre-replication complex (pre-RC) and it may be involved in the formation of replication forks and in the recruitment of other DNA replication related proteins. This protein can interact with MCM2 and MCM6, as well as with the origin recognition protein ORC2. It is regulated by proteolysis and phosphorylation in a cell cycle-dependent manner. Studies of a similar protein in <i>Xenopus</i> suggest that the chromatin binding of this protein at the onset of DNA replication is after pre-RC assembly and before origin unwinding. Alternatively spliced transcript variants encoding distinct isoforms have been identified.,MCM10,CNA43,DNA43,PRO2249,Epigenetics &amp; Nuclear Signaling,MCM10</p> |
| Molecular Weight: | 98 kDa  |
| Gene ID:          | 55388   |
| UniProt:          | <a href="#">Q7L590</a>  |
| Pathways:         | <a href="#">Mitotic G1-G1/S Phases, DNA Replication</a>   |

## Application Details

|                    |                       |
|--------------------|-----------------------|
| Application Notes: | WB,1:500 - 1:2000     |
| Comment:           | HIGH QUALITY          |
| Restrictions:      | For Research Use only |

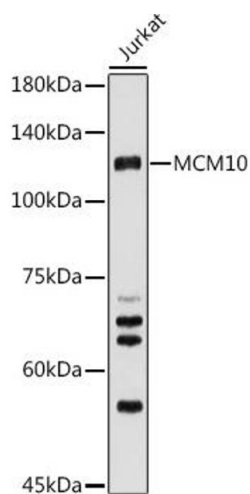
## Handling

|                    |  |
|--------------------|--|
| Format:            | Liquid   |
| Buffer:            | PBS with 0.02 % sodium azide,50 % glycerol, pH 7.3.  |
| Preservative:      | Sodium azide   |
| Precaution of Use: | This product contains Sodium azide: a POISONOUS AND HAZARDOUS SUBSTANCE which should be handled by trained staff only. |
| Storage:           | -20 °C   |

## Handling

Storage Comment: Store at -20°C. Avoid freeze / thaw cycles.

## Images



### Western Blotting

**Image 1.** Western blot analysis of extracts of Jurkat cells, using MCM10 antibody (ABIN6129654, ABIN6143639, ABIN6143641 and ABIN6223024) at 1:500 dilution. Secondary antibody: HRP Goat Anti-Rabbit IgG (H+L) (ABIN1684268 and ABIN3020597) at 1:10000 dilution. Lysates/proteins: 25 µg per lane. Blocking buffer: 3 % nonfat dry milk in TBST. Detection: ECL Basic Kit (RM00020). Exposure time: 180s.