

Datasheet for ABIN6143644
anti-MCM5 antibody (AA 1-230)

5 Images

[Go to Product page](#)

Overview

Quantity:	100 µL
Target:	MCM5
Binding Specificity:	AA 1-230
Reactivity:	Human
Host:	Rabbit
Clonality:	Polyclonal
Conjugate:	This MCM5 antibody is un-conjugated
Application:	Western Blotting (WB), Immunohistochemistry (IHC), Immunofluorescence (IF), Immunoprecipitation (IP)

Product Details

Immunogen:	Recombinant fusion protein containing a sequence corresponding to amino acids 1-230 of human MCM5 (NP_006730.2).
Sequence:	MSGFDDPGIF YSDSFGGDAQ ADEGQARKSQ LQRRFKEFLR QYRVGTDRTG FTFKYRDELK RHYNLGEYWI EVEMEDLASF DEDLADYLYK QPAEHLQLLE EAAKEVADEV TRPRPSGEEV LQDIQVMLKS DASPSSIRSL KSDMMSHLVK IPGIIAASA VRAKATRISI QCRSCRNTLT NIAMRPGLEG YALPRKCNTD QAGRPKCPLD PYFIMPDCKC CVDFQTLKLQ
Isotype:	IgG
Cross-Reactivity:	Human, Mouse, Rat
Characteristics:	Polyclonal Antibodies

Target Details

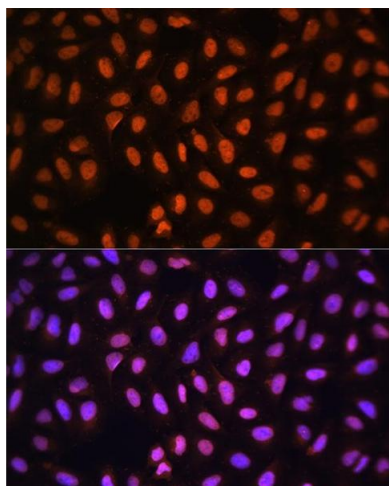
Target:	MCM5
Alternative Name:	MCM5 (MCM5 Products)
Background:	<p>The protein encoded by this gene is structurally very similar to the CDC46 protein from <i>S. cerevisiae</i>, a protein involved in the initiation of DNA replication. The encoded protein is a member of the MCM family of chromatin-binding proteins and can interact with at least two other members of this family. The encoded protein is upregulated in the transition from the G0 to G1/S phase of the cell cycle and may actively participate in cell cycle regulation.,MCM5,CDC46,P1-CDC46,Epigenetics & Nuclear Signaling,Cell Biology & Developmental Biology,Cell Cycle,Centrosome,MCM5</p>
Molecular Weight:	82 kDa
Gene ID:	4174
UniProt:	P33992
Pathways:	DNA Damage Repair , Mitotic G1-G1/S Phases , DNA Replication , Chromatin Binding , Synthesis of DNA

Application Details

Application Notes:	WB,1:500 - 1:2000,IHC,1:50 - 1:200,IF,1:50 - 1:200,IP,1:50 - 1:200
Restrictions:	For Research Use only

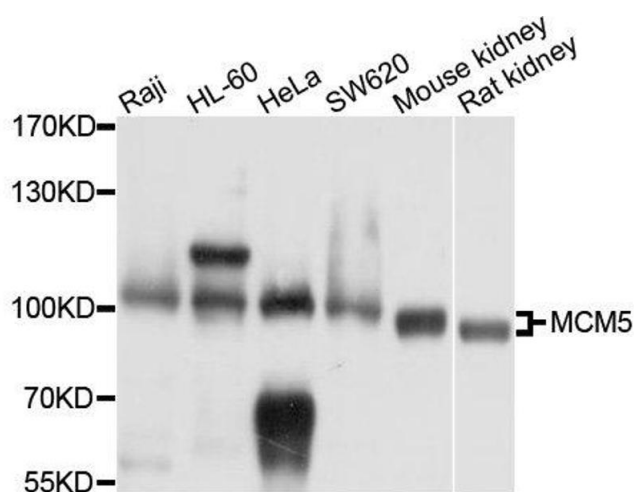
Handling

Format:	Liquid
Buffer:	PBS with 0.02 % sodium azide,50 % glycerol, pH 7.3.
Preservative:	Sodium azide
Precaution of Use:	This product contains Sodium azide: a POISONOUS AND HAZARDOUS SUBSTANCE which should be handled by trained staff only.
Storage:	-20 °C
Storage Comment:	Store at -20°C. Avoid freeze / thaw cycles.



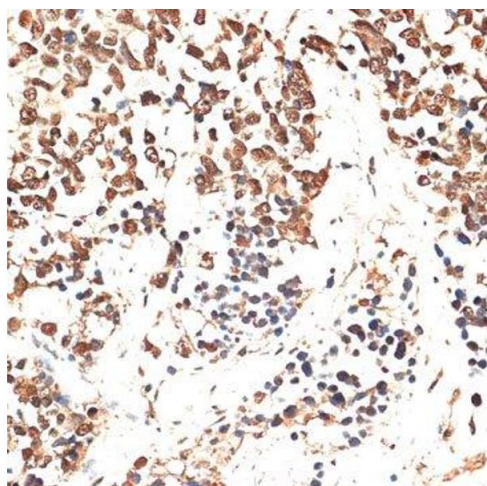
Immunofluorescence

Image 1. Immunofluorescence analysis of U-2 OS cells using MCM5 Rabbit pAb (ABIN6132074, ABIN6143644, ABIN6143646 and ABIN6217542) at dilution of 1:100 (40x lens). Blue: DAPI for nuclear staining.



Western Blotting

Image 2. Western blot analysis of extracts of various cell lines, using MCM5 antibody.



Immunohistochemistry (Paraffin-embedded Sections)

Image 3. Immunohistochemistry of paraffin-embedded human lung cancer using MCM5 antibody.

Please check the [product details page](#) for more images. Overall 5 images are available for ABIN6143644.