

Datasheet for ABIN6143727
anti-MEMO1 antibody (AA 1-297)



[Go to Product page](#)

3 Images

Overview

Quantity:	100 µL
Target:	MEMO1
Binding Specificity:	AA 1-297
Reactivity:	Human
Host:	Rabbit
Clonality:	Polyclonal
Conjugate:	This MEMO1 antibody is un-conjugated
Application:	Western Blotting (WB), Immunohistochemistry (IHC)

Product Details

Immunogen:	Recombinant fusion protein containing a sequence corresponding to amino acids 1-297 of human MEMO1 (NP_057039.1).
Sequence:	MSNRVVCREA SHAGSWYTAS GPQLNAQLEG WLSQVQSTKR PARAIAPHA GYTYCGSCAA HAYKQVDPSI TRRIFILGPS HHVPLSRCAL SSVDIYRTPL YDLRIDQKIY GELWKTGMFE RMSLQTDEDE HSIEMHLPYT AKAMESHKDE FTIIPVLVGA LSESKEQEFQ KLFSKYLADP SNLFWSSDF CHWGQRF RYS YYDESQGEIY RSIEHLDKMG MSIIQLDPV SFSNYLKKYH NTICGRHPIG VLLNAITELQ KNGMNMSFSF LNYAQSSQCR NWQDSSVSYA AGALTVH
Isotype:	IgG
Cross-Reactivity:	Human, Mouse, Rat
Characteristics:	Polyclonal Antibodies

Target Details

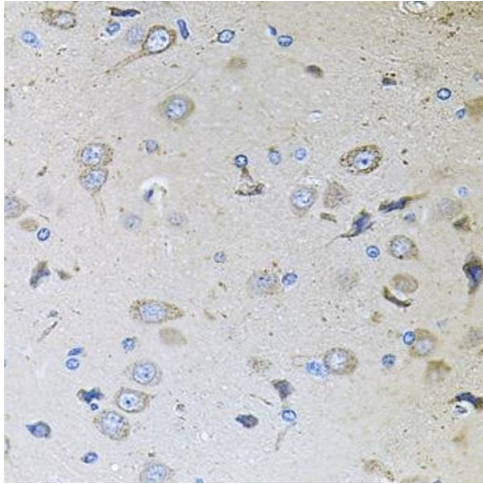
Target:	MEMO1
Alternative Name:	MEMO1 (MEMO1 Products)
Background:	May control cell migration by relaying extracellular chemotactic signals to the microtubule cytoskeleton. Mediator of ERBB2 signaling. The MEMO1-RHOA-DIAPH1 signaling pathway plays an important role in ERBB2-dependent stabilization of microtubules at the cell cortex. It controls the localization of APC and CLASP2 to the cell membrane, via the regulation of GSK3B activity. In turn, membrane-bound APC allows the localization of the MACF1 to the cell membrane, which is required for microtubule capture and stabilization. Is required for breast carcinoma cell migration.,MEMO1,C2orf4,CGI-27,MEMO,NS5ATP7,Signal Transduction,Kinase,Tyrosine kinases,ErbB-HER Signaling Pathway,Cell Biology & Developmental Biology,Cytoskeleton,Microfilaments,MEMO1
Molecular Weight:	31 kDa/33 kDa/34 kDa
Gene ID:	51072
UniProt:	Q9Y316

Application Details

Application Notes:	WB,1:500 - 1:2000,IHC,1:50 - 1:100
Comment:	HIGH QUALITY
Restrictions:	For Research Use only

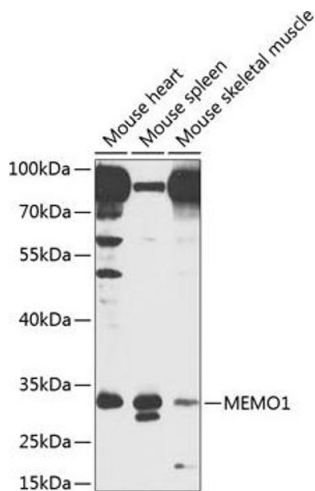
Handling

Format:	Liquid
Buffer:	PBS with 0.02 % sodium azide,50 % glycerol, pH 7.3.
Preservative:	Sodium azide
Precaution of Use:	This product contains Sodium azide: a POISONOUS AND HAZARDOUS SUBSTANCE which should be handled by trained staff only.
Storage:	-20 °C
Storage Comment:	Store at -20°C. Avoid freeze / thaw cycles.



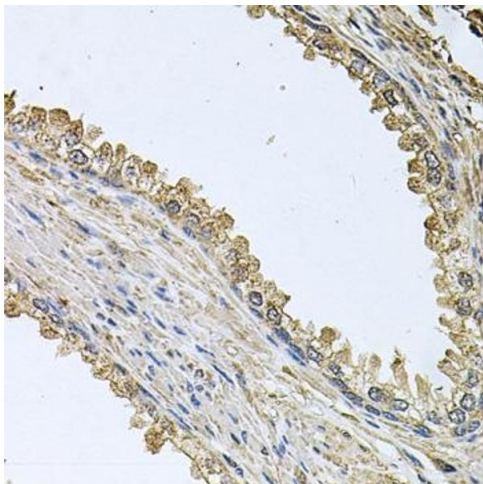
Immunohistochemistry

Image 1. Immunohistochemistry of paraffin-embedded rat brain using MEMO1 antibody at dilution of 1:100 (40x lens). Perform microwave antigen retrieval with 10 mM PBS buffer pH 7.2 before commencing with IHC staining protocol.



Western Blotting

Image 2. Western blot analysis of extracts of various cell lines, using MEMO1 antibody at 1:1000 dilution. Secondary antibody: HRP Goat Anti-Rabbit IgG (H+L) (ABIN1684268 and ABIN3020597) at 1:10000 dilution. Lysates/proteins: 25 µg per lane. Blocking buffer: 3% nonfat dry milk in TBST. Detection: ECL Enhanced Kit (RM00021). Exposure time: 60s.



Immunohistochemistry

Image 3. Immunohistochemistry of paraffin-embedded human prostate using MEMO1 antibody at dilution of 1:100 (40x lens). Perform microwave antigen retrieval with 10 mM PBS buffer pH 7.2 before commencing with IHC staining protocol.