



[Go to Product page](#)

Datasheet for ABIN6143752
anti-METAP2 antibody (AA 1-220)

1 Image

Overview

Quantity:	100 µL
Target:	METAP2
Binding Specificity:	AA 1-220
Reactivity:	Human
Host:	Rabbit
Clonality:	Polyclonal
Conjugate:	This METAP2 antibody is un-conjugated
Application:	Western Blotting (WB)

Product Details

Immunogen:	Recombinant fusion protein containing a sequence corresponding to amino acids 1-220 of human METAP2 (NP_006829.1).
Sequence:	MAGVEEVAAS GSHLNGDLDP DDREEGAAST AEEAAKKKRR KKKKSKGPSA AGEQEPDKES GASVDEVARQ LERSALEDKE RDEDDDEDGDG DGDGATGKKK KKKKKKRGPK VQTDPPSVPI CDLYPNGVFP KGQECEYPPT QDGRTAAWRT TSEEKKALDQ ASEEIWNDFR EAAEAHRQVR KYVMSWIKPG MTMIEICEKL EDCSRKLIKE NGLNAGLAFP
Isotype:	IgG
Cross-Reactivity:	Human, Mouse
Characteristics:	Polyclonal Antibodies

Target Details

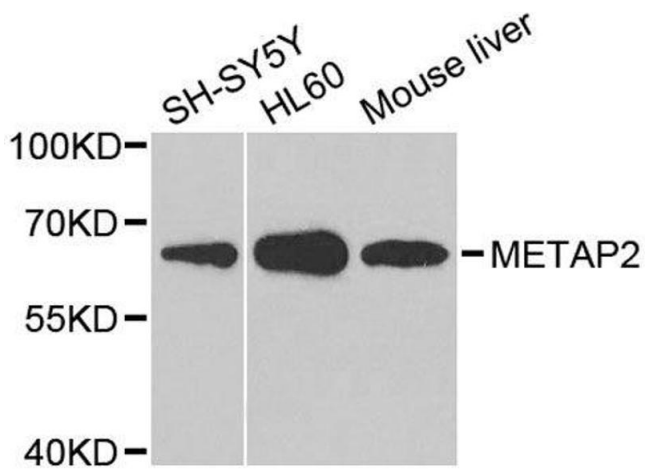
Target:	METAP2
Alternative Name:	METAP2 (METAP2 Products)
Background:	<p>The protein encoded by this gene is a member of the methionyl aminopeptidase family. The encoded protein functions both by protecting the alpha subunit of eukaryotic initiation factor 2 from inhibitory phosphorylation and by removing the amino-terminal methionine residue from nascent proteins. Increased expression of this gene is associated with various forms of cancer, and the anti-cancer drugs fumagillin and ovalicin inhibit the protein by irreversibly binding to its active site. Inhibitors of this gene have also been shown to be effective for the treatment of obesity. A pseudogene of this gene is located on chromosome 2. Several transcript variants encoding different isoforms have been found for this</p> <p>gene.,METAP2,MAP2,MNPEP,p67eIF2,Epigenetics & Nuclear Signaling,RNA Binding,Cancer,Signal Transduction,Endocrine & Metabolism,Amino acid metabolism,METAP2</p>
Molecular Weight:	50 kDa/52 kDa
Gene ID:	10988
UniProt:	P50579
Pathways:	Regulation of G-Protein Coupled Receptor Protein Signaling

Application Details

Application Notes:	WB,1:200 - 1:2000
Comment:	HIGH QUALITY
Restrictions:	For Research Use only

Handling

Format:	Liquid
Buffer:	PBS with 0.02 % sodium azide,50 % glycerol, pH 7.3.
Preservative:	Sodium azide
Precaution of Use:	This product contains Sodium azide: a POISONOUS AND HAZARDOUS SUBSTANCE which should be handled by trained staff only.
Storage:	-20 °C
Storage Comment:	Store at -20°C. Avoid freeze / thaw cycles.



Western Blotting

Image 1. Western blot analysis of extracts of various cell lines, using METAP2 antibody.