



[Go to Product page](#)

Datasheet for ABIN6143800
anti-MFN2 antibody (AA 500-600)

7 Images

Overview

Quantity:	100 µL
Target:	MFN2
Binding Specificity:	AA 500-600
Reactivity:	Human
Host:	Rabbit
Clonality:	Polyclonal
Conjugate:	This MFN2 antibody is un-conjugated
Application:	Western Blotting (WB), Immunohistochemistry (IHC), Immunofluorescence (IF)

Product Details

Immunogen:	A synthetic peptide corresponding to a sequence within amino acids 500-600 of human Mitofusin 2 (NP_001121132.1).
Sequence:	GLKPLLPSV RSQIDMLVPR QCFSLNYDLN CDKLCADFQE DIEFHFSLGW TMLVNRFLGP KNSRRALMGY NDQVQRPIPL TPANPSMPPL PQGSLTQEEF M
Isotype:	IgG
Cross-Reactivity:	Human, Mouse, Rat
Characteristics:	Polyclonal Antibodies

Target Details

Target:	MFN2
---------	------

Target Details

Alternative Name: MFN2 ([MFN2 Products](#))

Background: This gene encodes a mitochondrial membrane protein that participates in mitochondrial fusion and contributes to the maintenance and operation of the mitochondrial network. This protein is involved in the regulation of vascular smooth muscle cell proliferation, and it may play a role in the pathophysiology of obesity. Mutations in this gene cause Charcot-Marie-Tooth disease type 2A2, and hereditary motor and sensory neuropathy VI, which are both disorders of the peripheral nervous system. Defects in this gene have also been associated with early-onset stroke. Two transcript variants encoding the same protein have been identified.,CMT2A,CMT2A2,CMT2A2A,CMT2A2B,CPRP1,HMSN6A,HSG,MARF,MFN2,Mitofusin 2,Cancer,Signal Transduction,Cell Biology & Developmental Biology,Apoptosis,Autophagy,Endocrine & Metabolism,Mitochondrial metabolism,Mitochondrial markers,Mitophagy fission and fusion,Neuroscience,Neurodegenerative Diseases,Mitochondrial Control of Autophagy,MFN2

Molecular Weight: 50 kDa/86 kDa

Gene ID: 9927

UniProt: [O95140](#)

Pathways: [Skeletal Muscle Fiber Development](#)

Application Details

Application Notes: WB,1:500 - 1:2000,IHC,1:50 - 1:200,IF,1:50 - 1:200

Restrictions: For Research Use only

Handling

Format: Liquid

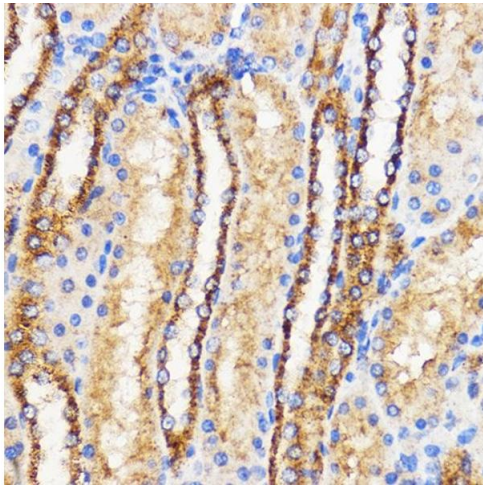
Buffer: PBS with 0.02 % sodium azide,50 % glycerol, pH 7.3.

Preservative: Sodium azide

Precaution of Use: This product contains Sodium azide: a POISONOUS AND HAZARDOUS SUBSTANCE which should be handled by trained staff only.

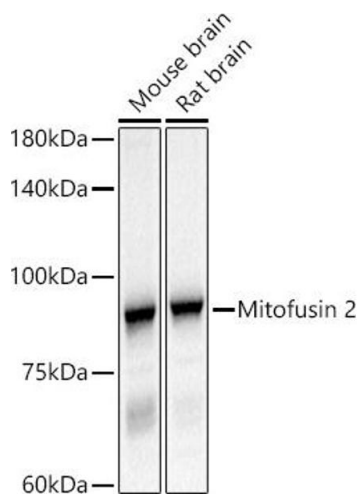
Storage: -20 °C

Storage Comment: Store at -20°C. Avoid freeze / thaw cycles.



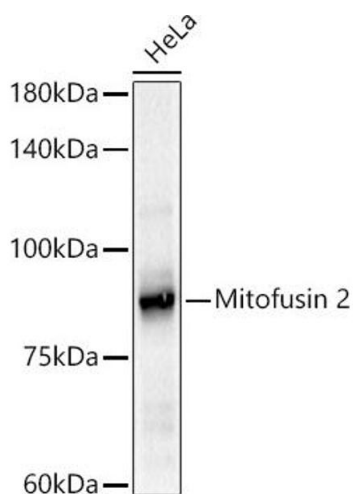
Immunohistochemistry

Image 1. Immunohistochemistry of paraffin-embedded Rat kidney using Mitofusin 2 Rabbit pAb (ABIN6133825, ABIN6143800, ABIN6143803 and ABIN6216518) at dilution of 1:100 (40x lens). Perform microwave antigen retrieval with 10 mM PBS buffer pH 7.2 before commencing with IHC staining protocol.



Western Blotting

Image 2. Western blot analysis of extracts of various cell lines, using Mitofusin 2 antibody (ABIN6133825, ABIN6143800, ABIN6143803 and ABIN6216518) at 1:500 dilution. Secondary antibody: HRP Goat Anti-Rabbit IgG (H+L) (ABIN1684268 and ABIN3020597) at 1:10000 dilution. Lysates/proteins: 25 µg per lane. Blocking buffer: 3 % nonfat dry milk in TBST. Detection: ECL Basic Kit (RM00020). Exposure time: 3s.



Western Blotting

Image 3. Western blot analysis of extracts of HeLa cells, using Mitofusin 2 antibody (ABIN6133825, ABIN6143800, ABIN6143803 and ABIN6216518) at 1:500 dilution. Secondary antibody: HRP Goat Anti-Rabbit IgG (H+L) (ABIN1684268 and ABIN3020597) at 1:10000 dilution. Lysates/proteins: 25 µg per lane. Blocking buffer: 3 % nonfat dry milk in TBST. Detection: ECL Basic Kit (RM00020). Exposure time: 30s.

Please check the [product details page](#) for more images. Overall 7 images are available for ABIN6143800.