

Datasheet for ABIN6143847
anti-MIPEP antibody (AA 504-713)



[Go to Product page](#)

1 Image

Overview

Quantity:	100 µL
Target:	MIPEP
Binding Specificity:	AA 504-713
Reactivity:	Human
Host:	Rabbit
Clonality:	Polyclonal
Conjugate:	This MIPEP antibody is un-conjugated
Application:	Western Blotting (WB)

Product Details

Immunogen:	Recombinant fusion protein containing a sequence corresponding to amino acids 504-713 of human MIPEP (NP_005923.2).
Sequence:	MLGRTRYQHV TGTRCPTDFA EVPSILMEYF ANDYRVVNQF ARHYQTGQPL PKNMVSRLCE SKKVCAADM QLQVFYATLD QIYHGKHPLR NSTTDILKET QEKFYGLPYV PNTAWQLRFS HLVGYGARYY SYLMSRAVAS MVWKECFLQD PFNRAAGERY RREMLAHGGG REPMLMVEGM LQKCPSVDDF VSALVSDL DL DFETFLMDSE
Isotype:	IgG
Cross-Reactivity:	Human
Characteristics:	Polyclonal Antibodies

Target Details

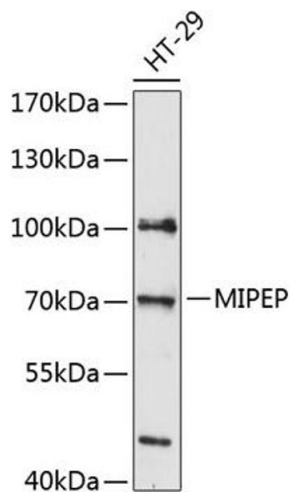
Target:	MIPEP
Alternative Name:	MIPEP (MIPEP Products)
Background:	<p>The product of this gene performs the final step in processing a specific class of nuclear-encoded proteins targeted to the mitochondrial matrix or inner membrane. This protein is primarily involved in the maturation of oxidative phosphorylation (OXPHOS)-related proteins. This gene may contribute to the functional effects of frataxin deficiency and the clinical manifestations of Friedreich ataxia.,MIPEP,COXPD31,HMIP,MIP,Signal Transduction,Endocrine & Metabolism,Mitochondrial metabolism,Mitochondrial markers,MIPEP</p>
Molecular Weight:	80 kDa
Gene ID:	4285
UniProt:	Q99797

Application Details

Application Notes:	WB,1:500 - 1:2000
Restrictions:	For Research Use only

Handling

Format:	Liquid
Buffer:	PBS with 0.02 % sodium azide,50 % glycerol, pH 7.3.
Preservative:	Sodium azide
Precaution of Use:	This product contains Sodium azide: a POISONOUS AND HAZARDOUS SUBSTANCE which should be handled by trained staff only.
Storage:	-20 °C
Storage Comment:	Store at -20°C. Avoid freeze / thaw cycles.



Western Blotting

Image 1. Western blot analysis of extracts of HT-29 cells, using MIPEP antibody at 1:3000 dilution. Secondary antibody: HRP Goat Anti-Rabbit IgG (H+L) (ABIN1684268 and ABIN3020597) at 1:10000 dilution. Lysates/proteins: 25 µg per lane. Blocking buffer: 3% nonfat dry milk in TBST. Detection: ECL Enhanced Kit (RM00021). Exposure time: 90s.