

Datasheet for ABIN6143859
anti-MKL2 antibody (AA 170-300)



[Go to Product page](#)

1 Image

Overview

Quantity:	100 µL
Target:	MKL2
Binding Specificity:	AA 170-300
Reactivity:	Human
Host:	Rabbit
Clonality:	Polyclonal
Conjugate:	This MKL2 antibody is un-conjugated
Application:	Western Blotting (WB)

Product Details

Immunogen:	Recombinant fusion protein containing a sequence corresponding to amino acids 170-300 of human MKL2 (NP_054767.3).
Sequence:	IIGVGKEDYP HTQGDFSFDE DSSDALSPDQ PASQESQGSA ASPSEPKVSE SPSPTTNTNP AQFASVSPTV PEFLKTPPTA DQPPRPAAP VLPTNTVSSA KPGPALVKQS HPKNPNDKHR SKKCKDPKPR V
Isotype:	IgG
Cross-Reactivity:	Human, Mouse
Characteristics:	Polyclonal Antibodies

Target Details

Target:	MKL2
---------	------

Target Details

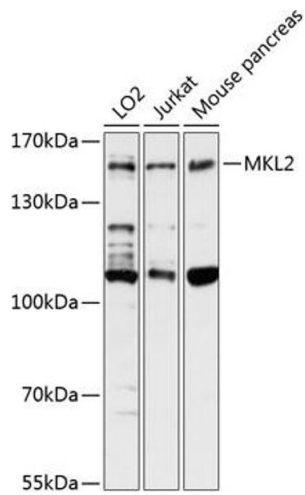
Alternative Name:	MKL2 (MKL2 Products)
Background:	Acts as a transcriptional coactivator of serum response factor (SRF. Required for skeletal myogenic differentiation.,MKL2,MRTF-B,MRTFB,NPD001,Epigenetics & Nuclear Signaling,Transcription Factors,Stem Cells,Mesenchymal Stem Cells,Cardiovascular,Heart,Cardiogenesis,MKL2
Molecular Weight:	42 kDa/51 kDa/114 kDa/118 kDa/119 kDa
Gene ID:	57496
UniProt:	Q9ULH7

Application Details

Application Notes:	WB,1:500 - 1:2000
Restrictions:	For Research Use only

Handling

Format:	Liquid
Buffer:	PBS with 0.02 % sodium azide,50 % glycerol, pH 7.3.
Preservative:	Sodium azide
Precaution of Use:	This product contains Sodium azide: a POISONOUS AND HAZARDOUS SUBSTANCE which should be handled by trained staff only.
Storage:	-20 °C
Storage Comment:	Store at -20°C. Avoid freeze / thaw cycles.



Western Blotting

Image 1. Western blot analysis of extracts of various cell lines, using MKL2 antibody at 1:3000 dilution. Secondary antibody: HRP Goat Anti-Rabbit IgG (H+L) (ABIN1684268 and ABIN3020597) at 1:10000 dilution. Lysates/proteins: 25 µg per lane. Blocking buffer: 3% nonfat dry milk in TBST. Detection: ECL Basic Kit (RM00020). Exposure time: 90s.