



Datasheet for ABIN6143861
anti-MKLN1 antibody (AA 436-735)



[Go to Product page](#)

1 Image

Overview

Quantity:	100 µL
Target:	MKLN1
Binding Specificity:	AA 436-735
Reactivity:	Human
Host:	Rabbit
Clonality:	Polyclonal
Conjugate:	This MKLN1 antibody is un-conjugated
Application:	Western Blotting (WB)

Product Details

Immunogen:	Recombinant fusion protein containing a sequence corresponding to amino acids 436-735 of human MKLN1 (NP_037387.2).
Sequence:	QTWKLLREDS CNAGPEDIQS RIGHCMLFHS KNRCLYVFGG QRSKTYLNDF FSYDVDS DHV DIISDGTKKD SGMVPM TGFT QRATIDPELN EHVLSGLSK DKEKREENVR NSFWIYDIVR NSWSCVYKND QAAKDNPTKS LQEEPCPRF AHQLVYDELH KVHYLFGGNP GKSCSPKMRL DDFWSLKLCR PSKDYLLRHC KYLIRKHRFE EKAQVDPLSA LKYLQNDLYI TVDHSDPEET KEFQLLASAL FKSGSDFTAL GFSDVDHTYA QRTQLFDTLV NFFPDSMTTPP KGNLVDLITL
Isotype:	IgG
Cross-Reactivity:	Mouse
Characteristics:	Polyclonal Antibodies

Target Details

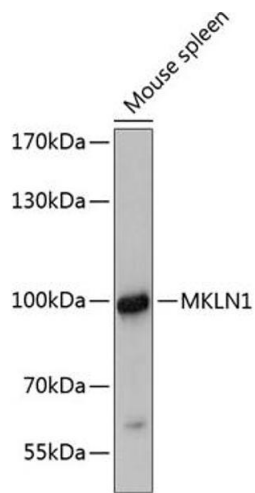
Target:	MKLN1
Alternative Name:	MKLN1 (MKLN1 Products)
Background:	Muskelin is an intracellular protein that acts as a mediator of cell spreading and cytoskeletal responses to the extracellular matrix component thrombospondin I (MIM 188060) (Adams et al., 1998 [PubMed 9724633]),,MKLN1,TWA2,muskelin,Signal Transduction,MKLN1
Molecular Weight:	60 kDa/84 kDa
Gene ID:	4289
UniProt:	Q9UL63

Application Details

Application Notes:	WB,1:500 - 1:1000
Restrictions:	For Research Use only

Handling

Format:	Liquid
Buffer:	PBS with 0.02 % sodium azide,50 % glycerol, pH 7.3.
Preservative:	Sodium azide
Precaution of Use:	This product contains Sodium azide: a POISONOUS AND HAZARDOUS SUBSTANCE which should be handled by trained staff only.
Storage:	-20 °C
Storage Comment:	Store at -20°C. Avoid freeze / thaw cycles.



Western Blotting

Image 1. Western blot analysis of extracts of mouse spleen, using MKLN1 antibody (ABIN6129054, ABIN6143861, ABIN6143863 and ABIN6215693) at 1:3000 dilution. Secondary antibody: HRP Goat Anti-Rabbit IgG (H+L) (ABIN1684268 and ABIN3020597) at 1:10000 dilution. Lysates/proteins: 25 µg per lane. Blocking buffer: 3 % nonfat dry milk in TBST. Detection: ECL Enhanced Kit (RM00021). Exposure time: 90s.