



[Go to Product page](#)

Datasheet for ABIN6143882
anti-MLKL antibody (C-Term)

3 Images

Overview

Quantity:	100 µL
Target:	MLKL
Binding Specificity:	C-Term
Reactivity:	Mouse
Host:	Rabbit
Clonality:	Polyclonal
Conjugate:	This MLKL antibody is un-conjugated
Application:	Western Blotting (WB), Immunohistochemistry (IHC)

Product Details

Immunogen:	A synthetic peptide corresponding to a sequence within amino acids 400 to the C-terminus of mouse MLKL (NP_001297542.1).
Sequence:	EGCDSSKIRE LVAEDKKQEP VGQDCPELLR EIINECRAHE PSQRPSVDGR SLSGRERILE RLSAVEESTD KKV
Isotype:	IgG
Cross-Reactivity:	Human, Mouse, Rat
Characteristics:	Polyclonal Antibodies

Target Details

Target:	MLKL
---------	------

Target Details

Alternative Name: MLKL ([MLKL Products](#))

Background: This gene belongs to the protein kinase superfamily. The encoded protein contains a protein kinase-like domain, however, is thought to be inactive because it lacks several residues required for activity. This protein plays a critical role in tumor necrosis factor (TNF)-induced necroptosis, a programmed cell death process, via interaction with receptor-interacting protein 3 (RIP3), which is a key signaling molecule in necroptosis pathway. Inhibitor studies and knockdown of this gene inhibited TNF-induced necrosis. High levels of this protein and RIP3 are associated with inflammatory bowel disease in children. Alternatively spliced transcript variants have been described for this gene.,MLKL,hMLKL,Signal Transduction,Kinase,MLKL

Molecular Weight: 53 kDa/54 kDa

Gene ID: 74568

Application Details

Application Notes: WB,1:500 - 1:2000,IHC,1:50 - 1:200

Restrictions: For Research Use only

Handling

Format: Liquid

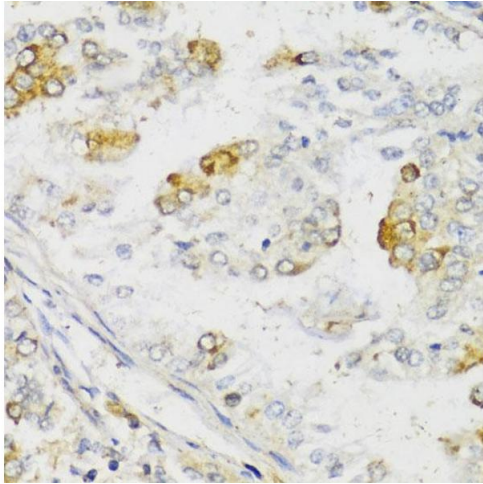
Buffer: PBS with 0.02 % sodium azide,50 % glycerol, pH 7.3.

Preservative: Sodium azide

Precaution of Use: This product contains Sodium azide: a POISONOUS AND HAZARDOUS SUBSTANCE which should be handled by trained staff only.

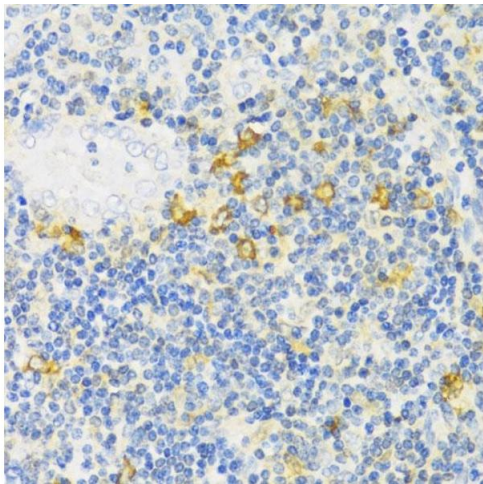
Storage: -20 °C

Storage Comment: Store at -20°C. Avoid freeze / thaw cycles.



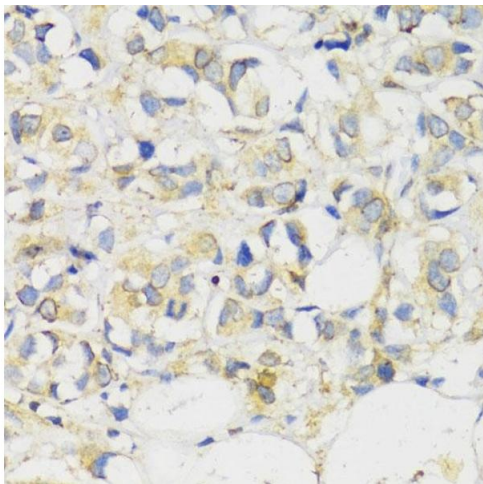
Immunohistochemistry

Image 1. Immunohistochemistry of paraffin-embedded human uterine cancer using MLKL antibody (ABIN6134395, ABIN6143882, ABIN6143886 and ABIN6217454) at dilution of 1:100 (40x lens). Perform microwave antigen retrieval with 10 mM PBS buffer pH 7.2 before commencing with IHC staining protocol.



Immunohistochemistry

Image 2. Immunohistochemistry of paraffin-embedded human tonsil using MLKL antibody (ABIN6134395, ABIN6143882, ABIN6143886 and ABIN6217454) at dilution of 1:100 (40x lens). Perform microwave antigen retrieval with 10 mM PBS buffer pH 7.2 before commencing with IHC staining protocol.



Immunohistochemistry

Image 3. Immunohistochemistry of paraffin-embedded human breast cancer using MLKL antibody (ABIN6134395, ABIN6143882, ABIN6143886 and ABIN6217454) at dilution of 1:100 (40x lens). Perform microwave antigen retrieval with 10 mM PBS buffer pH 7.2 before commencing with IHC staining protocol.